

Effect of Some Fungal and Bacterial Organisms on the Growth of Cowpea (*Vigna unguiculata* (L.) Walp) Seedlings

ABSTRACT

Aims: Cowpea [*Vigna unguiculata*(L.) Walp] is a legume widely consumed in Africa. The effect of eight organisms viz: *Fusarium oxysporum*, *Aspergillus niger*, *Botryodiplodia theobromae*, *Rhizopus stolonifer*, *Pseudomonas* sp., *Corynebacterium* sp., *Micrococcus* sp. and *Xanthomonas* sp. on the growth of *Vigna unguiculata* seedlings was determined.

Methodology:Spore suspension of each fungal organism was prepared from pure cultures grown on Potato Dextrose Agar (PDA) plates and the bacteria used were obtained from slants. Fungal spores were standardized with the help of a haemocytometer slide and gelatine (0.1%) was used as a sticker. Using serial dilution method, 0.1ml of each of the isolated bacteria was collected from the 10^{-3} dilution and sprayed on the young seedlings using the run-off method. The cowpea seedlings were separately inoculated with each organism at the three leaf stage, three weeks after planting. Seedlings were artificially inoculated by spraying the adaxial surface of the leaves until water-soaked spots were obtained. The experiment was allowed to stand for 2 months and the leaf number, root length, shoot length and total seedling height of the cowpea seedlings were determined.

Results:Symptoms observed on seedlings were: stunted growth, drying of leaves, few fibrous roots, yellowing of leaves, wilting, necrotic lesions, leaf spot, darkening of leaf veins and blight. Most of the test organisms were pathogenic to *V. unguiculata* causing varying degrees of damage. *Fusarium oxysporum* caused the most deterioration on cowpea seedlings when compared to the other treatments.

Conclusion:This study has demonstrated the ability of culture filtrates of pathogenicmicroorganisms to express symptoms in seedlings and transmit diseases to healthy seedlings.

Keywords: Bacteria, Fungi, Inoculation, Pathogens, Symptoms, *Vigna unguiculata*

1. INTRODUCTION

Vigna unguiculata (L.) Walp. (cowpea) is an annual herbaceous legume cultivated for its edible seeds or for animal feed. The crop serves as both vegetable and pulse crop. It is a major source of proteins, essential vitamins, minerals and amino acids in most tropical third world countries [1,2]. They are mostly grown for grain but a small proportion (about 10%) are grown as fresh pods eastern Asia or as green leafy vegetables, fodder or fresh pods in Africa [3]. Cowpeas are annual herbaceous crops that are erect, climbing or prostrate with a strong principal root and many spreading lateral roots in surface soil [4]. *V. unguiculata* has a well-developed root system and can grow up to 80 cm for the erect varieties, and up to 2 m for the climbing cultivars. Germination in cowpea is epigeal. The first pair of true leaves are simple and opposite while subsequent leaves are trifoliate with oval leaflets. Pods occur in pairs, mostly vertical and pending, but they can also be erect. They contain 8-20 seeds and are cylindrical in shape, 2-6 cm long and 3-12 mm broad. Seeds can be black, white or pink brown [5]. Cowpeas are adapted to warm season and are grown in the tropical and

subtropical zones, in sub-Saharan Africa and in Asia, the Caribbean, Central America, South America, around the Mediterranean Sea and the United States of America. Temperatures are suitable for cowpea all year round in the tropical zones while in the subtropical zones, temperatures are just suitable in the summer. Over 95% of the world's cowpea production takes place in Sub-Saharan Africa, with about 12.5 million hectares of land under cowpea cultivation globally in 2014 [6]. The Sudan savannah zone of Nigeria is the centre of maximum diversity of cultivated cowpeas. Nigeria (4 million ha) has the largest area of cowpea cultivation according to FAOSTAT [6]. The second largest producing continent is Asia and it represents less than 3% of cowpea production worldwide from 1993 to 2014. Over this period of time, most of the cultivation in Asia was done in Myanmar [6]. In Africa, *V. unguiculata* is mostly grown on lowlands but can be cultivated at an altitude of up to 1800 m.

Cowpea is prone to its natural enemies. Although cowpea is used as bio-fertilizer in agriculture and it's a good source of amino acids for humans, however, commercial production of the legume is highly affected by pests (especially arthropods) and pathogenic organisms [7]. Insects of various types cause devastating losses on cowpea, but nematodes, bacterial, fungal and viral diseases also cause losses. Several fungal and bacterial pathogens have been reported to infect crop plants which lead to decrease in their yield and consequently reduce profit. The main objective of plant pathology is to prevent diseases and widespread outbreak of destructive diseases. Microorganisms can be transmitted into healthy young seedlings through inoculation, dispersal of spores etc. Dormant fungal spores that over-wintered from one farming season to another can spread to healthy plants in the field thereby causing destruction. Poor storage of seeds may create a favourable environment for the growth of pathogens and infected seeds from a previous harvest may lead to disease spread. Therefore, the aim of this study is to ascertain the effect of some fungal and bacterial organisms on the growth of *V. unguiculata* seedlings and also to determine the symptoms caused by these organisms on cowpea.

2. MATERIAL AND METHODS

2.1 Source of Microorganisms

Botryodiplodia theobromae, *Fusarium oxysporum*, *Rhizopus stolonifer*, *Aspergillus niger*, *Pseudomonas* sp., *Corynebacterium* sp., *Micrococcus* sp. and *Xanthomonas* sp. were isolated from diseased *Vigna unguiculata* seeds [8] using Standard Blotter Method [9] and Agar Method described by Klement and Voros [10]. Whatman's filter papers were soaked in sterile distilled water and placed on Petri dishes. Sterilized cowpea seeds were plated on the filter papers and then incubated for 7days at room temperature (28°C). Fungal growth was observed on the filter papers and the resulting fungi were sub-cultured on Potato Dextrose Agar (PDA) medium. Isolated fungi were identified according to the guidelines issued by Umechuruba and Elenwo [11] and Ataga *et al.* [12]. Pure culture of each fungus was used as inoculum.

2.2 Inoculation of Healthy Cowpea Seedlings with Culture Filtrates of Test Fungi and Bacteria

Five healthy cowpea seeds were planted in polythene bags containing fine grained sterile sandy loam soil obtained from the back of Faculty of Science (Ofrima Hall), University of Port Harcourt, Rivers State. Nine treatments were used and each treatment was replicated five times. A total of 45bags were used in this experiment for the eight test organisms (fungi and bacteria) and the control. Completely Randomized Design (CRD) was used as the experimental layout. The plants were irrigated at 24hours interval.

The test organisms used in this study were: *F. oxysporum*, *A. niger*, *B. theobromae*, *R. stolonifer*, *Pseudomonas* sp., *Corynebacterium* sp., *Micrococcus* sp. and *Xanthomonas* sp. Spore suspension of each fungus was prepared from culture in Petri-dishes and the bacteria from the slants. For the bacterial organisms, serial dilution method was used from the 10^{-3} dilution where 0.1ml of each of the isolated bacteria was sprayed using the run-off method. Mycelia suspensions of the fungal isolates were prepared by punching 7 day old fungal cultures in agar plates using 5mm cork borer. The agar pieces of each test fungus were separately lodged into 10ml of distilled water and then sieved through double layer muslin cloth to remove the hyphae, agar lumps and other impurities. The spore suspension of each fungus was standardized at 10,000 spores per ml, in gelatine water. The spore suspension was standardized with the help of a haemocytometer slide. Gelatine (0.1%) was used as a sticker.

After three weeks, the cowpea seedlings were separately inoculated with each test organism at the three leaf stage. Test seedlings were artificially inoculated by spraying the abaxial surface of the leaves until water-soaked spots were obtained using a hand operated sprayer. After spraying, each plant was covered with a sterile polythene bag for 24 hours to maintain about 100% relative humidity. The control plants were sprayed to run-off with sterile distilled water only and covered with polythene bags for 24 hours. The plants were water sprinkled at 24 hours interval and examined for signs of infection. Where symptoms occurred; isolation was carried out again to confirm the identity of the isolates.

2.3 Data Collection and Data Analysis

The experiment was studied for two months. The leaf number, root length, shoot length and total seedling height of the cowpea seedlings were determined at the end of the experiment. The number of emerged leaves was recorded daily for two months. The length of the shoot was measured from the root-collar to the terminal bud with a meter rule. The length of the longest root was measured with a meter rule. Total seedling height was obtained by measuring from the tip of the longest root to the shoot terminal bud with a meter rule.

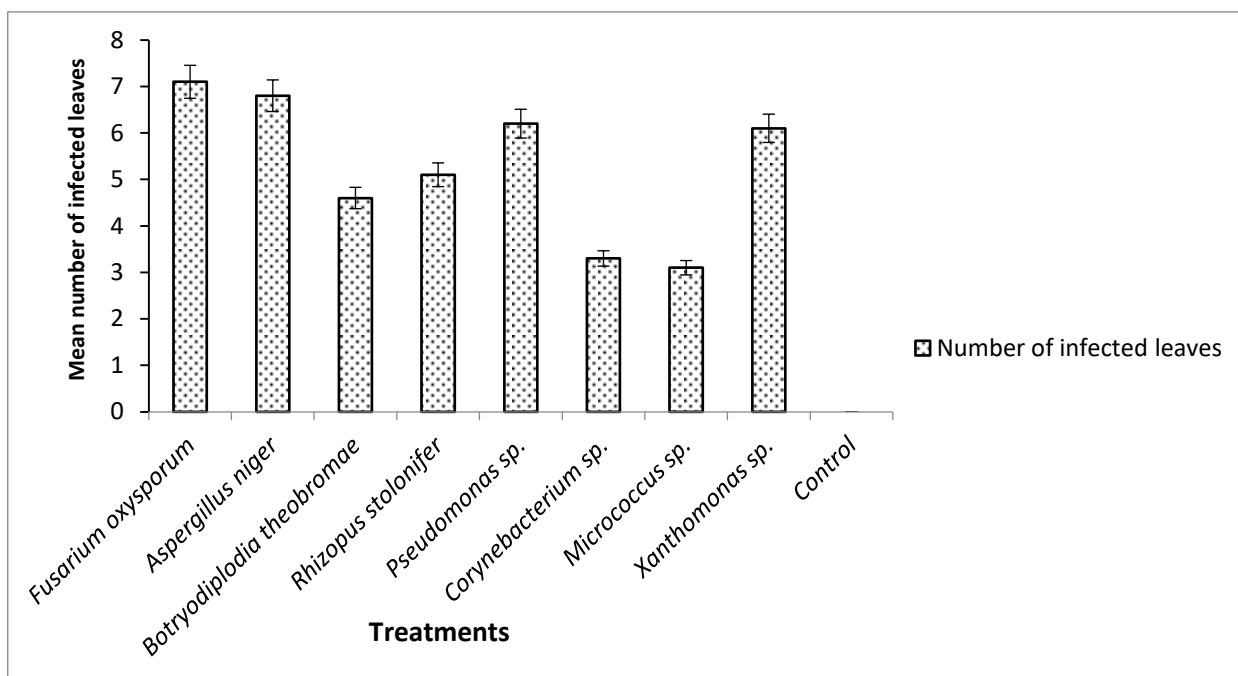
Analysis of variance (ANOVA) was carried out on all data collected. Duncan's Multiple Range Test (DMRT) was used to determine whether three or more means differ significantly. Bar graphs were plotted and the standard error bars noted at 95% confidence limit.

3. RESULTS AND DISCUSSION

3.1 Effect of Microorganisms on Cowpea Seedlings

The effect of *F. oxysporum*, *A. niger*, *B. theobromae*, *R. stolonifer*, *Pseudomonas* sp., *Corynebacterium* sp., *Micrococcus* sp. and *Xanthomonas* sp. on the seedling growth of cowpea are presented in Figures 1 to 3. The test organisms reduced the seedling growth of cowpea ($P < 0.05$) infected three weeks after planting.

The mean number of infected leaves (disease incidence) 2 months after planting showed that *F. oxysporum* (7.1) had the highest mean number of infected leaves followed by *A. niger* (6.8), *Pseudomonas* sp. (6.2), *Xanthomonas* sp. (6.1), *R. stolonifer* (5.1), *B. theobromae* (4.6), *Corynebacterium* sp. (3.3) and *Micrococcus* sp. (3.1) respectively. The control had no infected leaves (Figure 1).



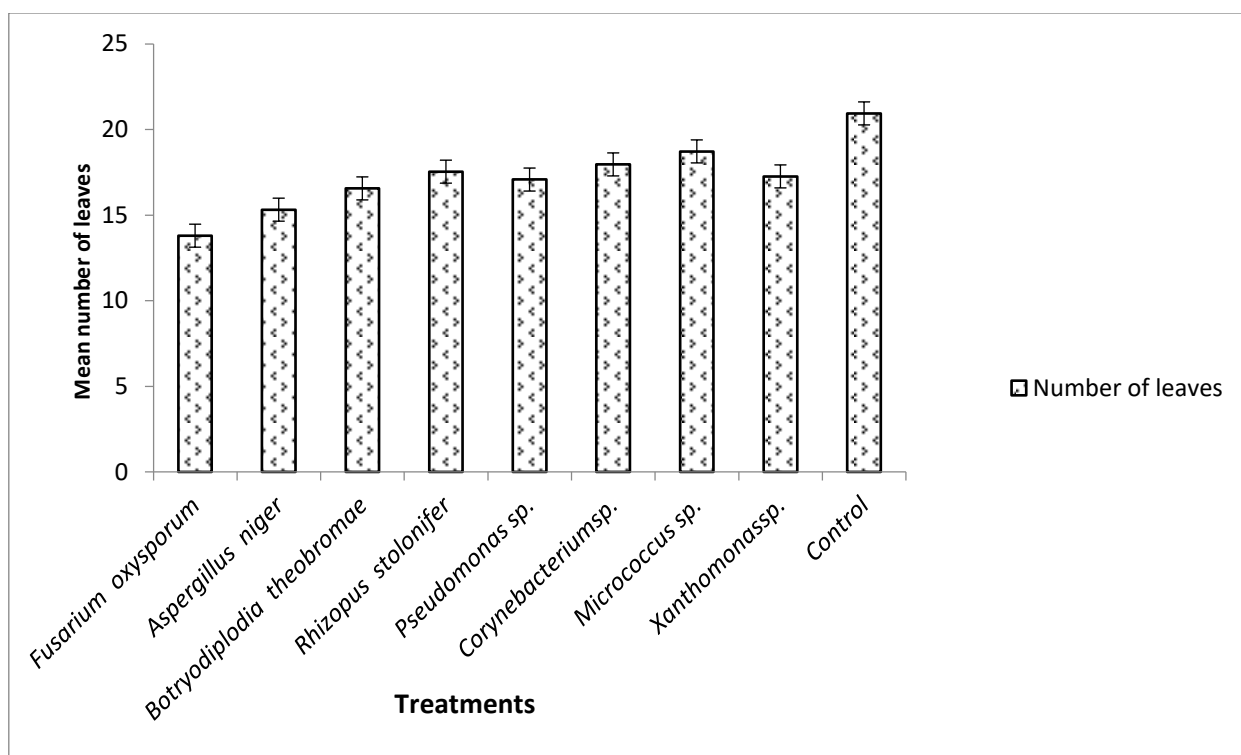
132

133 **Figure 1: Effect of microorganisms on number of infected leaves (disease incidence)**
 134 **of *Vigna unguiculata* seedlings two months after planting**

135 *I= Standard error ($P \leq 0.05$)

136 *F. oxysporum* (34.3%) caused the highest reduction in leaf mean number of cowpea
 137 seedlings followed by *A. niger* (27.1%), *B. theobromae* (21.0%), *Pseudomonas* sp. (18.6%),
 138 *Xanthomonas* sp. (17.6%), *R. stolonifer* (16.7%), *Corynebacterium* sp. (14.3%) and
 139 *Micrococcus* sp. (11.0%) when compared with the control (Figure 2).

140



141

142 **Figure 2: Effect of microorganisms on leaf number of *Vigna unguiculata* seedlings two**
 143 **months after planting.**

144 *I= Standard error ($P \leq 0.05$)

145

146 *F. oxysporum* (31.6%) caused the highest reduction in the mean root length of cowpea
 147 seedlings followed by *A. niger* (28.7%) *R. stolonifer* (24.3%) and *Pseudomonas* sp. (24.3%),
 148 *B. theobromae* (22.8%), *Corynebacterium* sp. (18.4%) and *Micrococcus* sp. (16.2%) when
 149 compared with the control (Figure 3). *F. oxysporum* (45.7%) caused the highest reduction in
 150 mean shoot length of cowpea seedlings followed by *A. niger* (38.2%), *B. theobromae*
 151 (34.7%), *R. stolonifer* (30.7%), *Pseudomonas* sp. (23.6%), *Corynebacterium* sp. (8.5%),
 152 *Xanthomonas* sp. (5.1%) and *Micrococcus* sp. (5.0%) when compared with the control
 153 (Figure 3).

154

155 *F. oxysporum* (40%) caused the highest reduction in the total seedling height of cowpea
 156 followed by *A. niger* (34.6%), *B. theobromae* (29.9%), *R. stolonifer* (27.8%), *Pseudomonas*
 157 sp. (23.9%), *Xanthomonas* sp. (17.9%) *Corynebacterium* sp. (12.5%) and *Microccus* sp.
 158 (9.3%) when compared with the control (Figure 3).

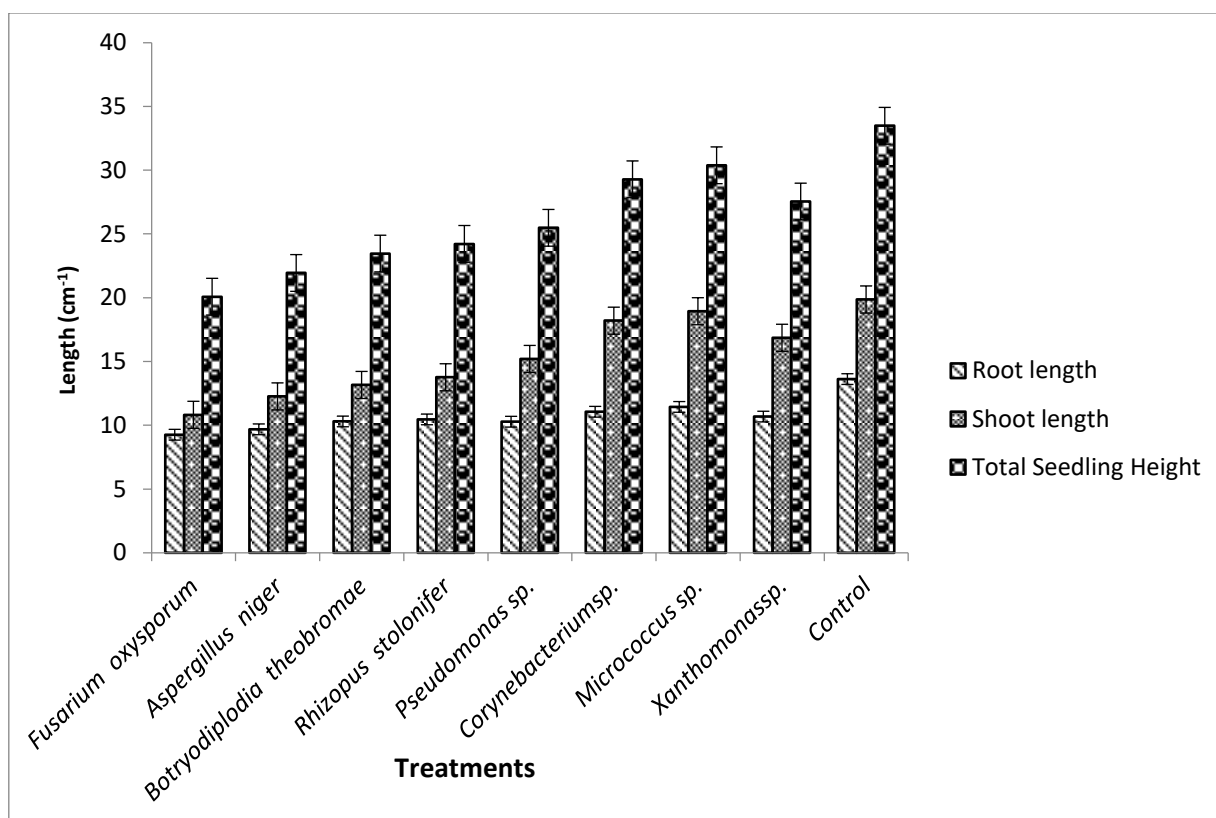


Figure 3: Effect of microorganisms on root length, shoot length and total seedling height of *Vigna unguiculata* seedlings two months after planting.

*I= Standard error ($P \leq 0.05$)

Fungal culture filtrate of *F. oxysporum*, *A. niger*, *B. theobromae* and *R. stolonifer* reduced the seedling growth of cowpea seedlings ($P < 0.05$). The results showed that *F. oxysporum* caused the highest reduction in both shoot and root length of cowpea seedlings. Reduction in seedling growth may be due to the amount of metabolites induced by this fungus which interferes with the normal metabolic and physiological processes of the seedlings. *Fusarium* wilt is caused by *F. oxysporum* [13]. *F. oxysporum* is responsible for limitation in cowpea production in different parts of the world.

Bacterial culture filtrates of *Pseudomonas sp.*, *Xanthomonas sp.*, *Corynebacterium sp.* and *Micrococcus sp.* significantly reduced the growth of cowpea seedlings ($P < 0.05$). Adebayo *et al.* [14] reported *Pseudomonas sp.*, *Xanthomonas sp.* and *Corynebacterium sp.* infestation on cowpea and maize grains. *Pseudomonas sp.* has been reported as a growth-promoting and antagonistic microorganism by many authors [15,16]. Venkatachalam *et al.* [17] reported the reduction in shoot length and root length in maize and radish respectively caused by culture filtrates of *Streptomyces viridochrogenes* and *S. clavifer*. Pectinases, cellulases and hydrolytic enzymes, are involved in the mechanisms used by bacteria to penetrate into and persist in host plants. The cell wall of plants consists of cellulose, while the middle lamella between cell walls is made up of mainly pectin. Hydrolysis of methyl-ester groups of cell wall pectins is catalyzed by pectinases. The ability of endophytes to degrade pectate could be an important factor in the colonization of the interspatial region between plant cells [18].

3.2 Disease Symptoms Observed on Inoculated Cowpea Seedlings

187
188 Cowpea seedlings infected with the different test organisms were observed for two months.
189 Different symptoms manifested as a result of the effect of the organisms on the seedlings.
190
191 Nine types of disease symptoms were observed to be associated with the seedlings.
192 Seedlings stunted (S₁), few fibrous roots (S₂), yellowing of leaves (S₃), drying of
193 leaves/defoliation (S₄), wilting (S₅), blight (S₆), leaf spot (S₇), necrotic lesions (S₈) and
194 darkening of leaf veins (S₉). Cowpea seedlings infected with *A. niger* showed stunted
195 growth, yellowing and drying of leaves. Those infected with *F. oxysporum* all showed stunted
196 growth, yellowing, wilting and drying of leaves. Seedlings infected with *R. stolonifer* showed
197 darkening of veins, necrotic lesions and wilting. *Pseudomonas* infected seedlings resulted in
198 wilting and yellow to light brown spots on leaves. *Xanthomonas* infected seedlings were
199 subjected to defoliation and leaf blight. Defoliation also occurred with *Corynebacterium*
200 infected seedlings with yellow necrotic leaf lesions and small dark brown lesions. Seedlings
201 inoculated with *Micrococcus* sp. had dried leaves. The control plants showed no symptoms.
202 The symptoms are represented in Table 1.
203
204

205

206

207

208

209

210

211

212

213

214

215

216

217

218

219

220

221

222 **Table 1: Disease symptoms associated with cowpea seedlings.**

223	S/N	Microorganism	Disease symptoms types	% of diseased seedlings
224				of cowpea
225	1	<i>Fusarium oxysporum</i>	S ₁	19
226			S ₂	17
227			S ₃	20
228			S ₄	17
229			S ₅	22
230	2	<i>Aspergillus niger</i>	S ₁	9
231			S ₃	10
232			S ₄	13
233	3	<i>Rhizopus stolonifer</i>	S ₅	7
234			S ₈	5
235			S ₉	6
236	4	<i>Botryodiplodia</i>	S ₄	6
237		<i>theobromae</i>	S ₇	4
238	5	<i>Pseudomonas</i> sp.	S ₅	14
239			S ₇	18
240	6	<i>Corynebacterium</i> sp.	S ₄	6
241			S ₈	4
242	7	<i>Micrococcus</i> sp.	S ₄	4
243	8	<i>Xanthomonas</i> sp.	S ₄	10
244			S ₆	15
245	9	Control	No disease symptoms	

246
 247
 248 Oluyemisi *et al.* [19] reported that seed inoculation with some seed mycoflora induced
 249 disease symptoms in cowpea seedlings. The organisms caused chlorosis and necrotic spots

on the leaves, stems and roots. The cell wall-degrading enzymes (pectinases and cellulases) produced by these organisms must have facilitated the penetration of the fungi. Kritzinger *et al.* [20] observed the effect of fumonisin (a mycotoxin produced by *Fusarium* sp.) on cowpea. Some of the contents of the cytoplasm passed through the plasma membrane as it separated from the cell wall. Irregular sized vacuoles were formed due to the contraction of the protoplasm. The destructive effects seen in the ultra structure of the cell might play a role in the significant reduction in germination, root and shoot. *F. oxysporum* is one of the important and diverse plant pathogenic fungi infecting nearly 150 plant species. The pathogen of each plant is specific and referred as formae specialis [21]. One of the important cowpea diseases is *F. oxysporum* and this species possess risk to production of wheat, banana, tomato, beans, peas, palm, onions, sorghum, cowpea, potatoes, garlic and maize etc [22]. The genus *Fusarium* consists of several species that produce mycotoxins responsible for various animal diseases.

The genus *Aspergillus* is widely distributed in various habitats and can grow on a wide range of substrates. *A. niger* is usually found as a saprophyte growing on stored grain, dead leaves, compost piles and other decaying vegetation. The conidiophores have smooth walls and are hyaline or dark near the vesicle. Hussain *et al.* [23] reported the pathogenicity of species belonging to the genera, *Fusarium* and *Aspergillus* to be highly infective by producing mycotoxins that are involved in retarding seedlings growth of maize. *B. theobromae* has been reported to be able to colonize many plants as both a pathogen and an endophyte [24,25]. *B. theobromae* is a common rot fungus that causes great economic losses in the cultivation of various crops such as banana, cocoa, yam and mango [26]. *B. theobromae* has also been reported to cause bark canker and die-back of pear trees in India [27].

R. stolonifer is usually considered as the most important species of the genus *Rhizopus*. *R. stolonifer* is a plant pathogen and in most plant hosts, it is a weak parasite. Plant disease symptoms associated with *R. stolonifer* are watery areas that are rapidly covered by coarse, copious gray cottony colony with black globules (sporangia) at the tips [28].

Fungal organisms contain cell wall degrading enzyme (CWDE) which consists of laccases and peroxidases. These enzymes are used for the degradation of glycoside hydrolases and lignin. Fungi secrete pectinases, cellulases and hemicellulases for the degradation of pectin, cellulose and hemicellulose respectively [29]. Plant immune responses are deactivated by effector proteins and this facilitates the colonization of the plant host by the pathogen [30]. Fungal effector proteins are of two types: those secreted in between the plant cells (apoplastic) and those accumulated inside the plant cells where the membranes are situated (cytoplasmic) [31].

Reddish leaf spots on cowpea seedlings infected by *Xanthomonas phaseoli* was earlier reported by Manyangirwa *et al.* [32]. Claudius-Cole *et al.* [33] reported bacteria blight caused by *Xanthomonas axonopodis* pv. *vignicola* on cowpea. *Xanthomonas campestris* pv. *vignicola* was reported by Okechukwu *et al.* [34] to be responsible for bacterial blight disease and post-emergence seedling mortality in cowpea. *Xanthomonas* is a well-known genus of bacterial plant pathogens whose members cause a variety of diseases in economically important crops worldwide [35]. Many strains of *Xanthomonas* produce the extracellular polysaccharide, xanthan which is used in the pharmaceutical and food industries. This polymer is also believed to be involved in a number of phases involved in the bacterial disease cycle.

V. unguiculata is a very good and cheap source of plant protein. Infection of seedlings could be as a result of poor storage of seeds or seedling infections by spores, agricultural

implements in the field etc. Seed testing and seed treatment are important measures that growers can take in order to produce healthy plant products and also help maintain sustainable production of cowpea for the teeming population of Africa and the world at large. Though most of the chemicals and fungicides used in the treatment of seeds before planting and in the control of these organisms are not affordable by most subsistence farmers, use of plant ash (potash) in dusting these seeds before planting and use of pepper (*Capsicum annum*) in storing seeds goes a long way in protecting them from pathogens infestation. Farmers are advised to employ different strategies such as cultural practices, application of bio-control agents, sowing pathogen-free seeds and planting of cowpea genotypes with resistance to the pathogen among others in order to control these pathogens and the diseases they incite.

4. CONCLUSION

The test organisms caused various degrees of deterioration in the inoculated *V. unguiculata* seedlings with *F. oxysporum* causing the highest damage. This means that all the organisms were pathogenic on *V. unguiculata* seedlings. Symptoms observed on seedlings include: stunting, few fibrous roots, yellowing of leaves, drying of leaves/defoliation, wilting, blight, leaf spot, necrotic lesions and darkening of leaf veins. These symptoms are known to be associated with fungal and bacterial diseases of plants.

COMPETING INTERESTS DISCLAIMER:

Authors have declared that no competing interests exist. The products used for this research are commonly and predominantly use products in our area of research and country. There is absolutely no conflict of interest between the authors and producers of the products because we do not intend to use these products as an avenue for any litigation but for the advancement of knowledge. Also, the research was not funded by the producing company rather it was funded by personal efforts of the authors.

REFERENCES

1. Enyiukwu DN, Amadioha AC and Ononuju CC. Significance of cowpea leaves for human consumption. *Greener Trends in Food Science and Nutrition*. 2018;1(1):1-10.
2. Falade MJ, Enikuomehin OA, Borisade OA and Aluko M. Control of cowpea (*Vigna unguiculata* L. Walp.) diseases with intercropping of maize (*Zea mays* L.) and spray of plant extracts. *Journal of Advances in Microbiology*. 2018;7(4):1-10.
3. Boukar O, Fatokun CA, Roberts P A, Abberton M, Huynh BL, Close TJ, Boahen SK, Higgins TJV and Ehlers JD. Cowpea In: De Ron, A.M. (ed.), *Grain legumes, series handbook of plant breeding*, Springer-Verlag, New York; 2015.
4. Sheahan CM. Plant guide for cowpea (*Vigna unguiculata*). USDA-Natural Resources Conservation Service, Cape May Plant Materials Center, Cape May, NJ; 2012.
5. Heuzé V, Tran G, Nozière P, Bastianelli D and Lebas F. Cowpea (*Vigna unguiculata*) forage. Feedipedia, a programme by INRAE, CIRAD, AFZ and FAO. <https://www.feedipedia.org/node/233> Last updated on October 20, 2015;16:20.

- 352 6. FAOSTAT. FAO Statistics online database, "Production/crops – 'Cowpeas, dry', year
353 2014", Food and Agriculture Organization, Rome, <http://faostat3.fao.org/home/E>; 2014
354 (accessed 10 September, 2021).
355
- 356 7. Enyiukwu DN, Amadioha AC and Ononuju CC. Histological aberrations and mode of
357 damage of cowpea (*Vigna unguiculata*) by *Colletotrichum destructivum*. Nusantara
358 Bioscience. 2021;13(1):16-23
359
- 360 8. Iyanyi NG and Ataga AE. Fungal species associated with *Vigna unguiculata* (L.) Walp
361 (cowpea) seed from parts of Enugu State, Nigeria. Scientia Africana. 2014;13(1):103-108.
362
- 363 9. ISTA (International Seed Testing Association). International rules for seed testing - rules
364 amendments. Seed Science Technology. 2016;29: 1-127.
365
- 366 10. Klement ZK and Voros IC. Methods in Pathology. Elsevier Scientific Publishing
367 Company, Amsterdam, London; 1974.
368
- 369 11. Umechuruba C. and Elenwo EN. Diagnostic techniques in mycology with practical
370 exercise. Belk Publisher; 1997.
371
- 372 12. Ataga AE, Elenwo EN and Nwachukwu EO. Laboratory exercises and series in
373 mycology. ACOTEC Technologies, Port Harcourt, Nigeria; 2010.
374
- 375 13. Kannan K, Kannan VR, Shibinaya N. and Umamaheswari M. Control of Fusarium wilt
376 disease in cowpea plant (*Vigna unguiculata* L.). using secondary metabolites produced in
377 *Bradyrhizobium japonicum*. KongunaduResearch Journal. 2019;6(2):28-36.
378
- 379 14. Adebayo RA, Adegbenro TA and Hassan GF. Occurrence of pathogens on grains of
380 cowpea (*Vigna unguiculata* Walpers) and Maize (*Zea mays* L.) infested by *Callosobruchus*
381 *maculatus* (F.) and *Sitophilus zeamais* Mots. Acta Scientific Agriculture. 2019;4(1):15-22.
382
- 383 15. Mukherjee A and Sinha-Babu SP. *Pseudomonas fluorescens* mediated suppression of
384 *Meloidogyne incognita* infection of cowpea and tomato. Archives of Phytopathology and Plant
385 Protection. 2013;46(5):607-616.
386
- 387 16. Manaf HH and Zayed MS. Productivity of cowpea as affected by salt stress in presence
388 of endomycorrhizae and *Pseudomonas fluorescens*. Annals of Agricultural Sciences.
389 2015;60(2):219-226.
390
- 391 17. Venkatachalam P, Ronald J and Sambath K. Effect of *Streptomyces* on seed
392 germination. International Journal of Pharmacy and Biological Sciences. 2010;1(4):145-154.
393
- 394 18. Schaller M, Borelli C, Korting HC and Hube B. Hydrolytic enzymes as virulence factors of
395 *Candida albicans*. Mycoses, 2005;48: 365-377.
396
- 397 19. Oluyemisi BF, Oladimeji A and Olusegun SB. Pathogenicity and cell wall-degrading
398 enzyme activities of some fungal isolates from cowpea (*Vigna unguiculata* (L.) Walp).
399 Biokemistri. 2006;181(1) 45-51.
400
- 401 20. Kritzing Q, Aveling TAS and Van Der Merwe CF. Phytotoxic effects of fumonisin B1 on
402 cowpea seed. Phytoparasitica. 2006;34(2) 178-186.

21. Rana A, Sahgal M and Johr BN. *Fusarium oxysporum*: genomics, diversity and plant–host interaction In: T. Satyanarayana et al. (eds.), Developments in Fungal Biology and Applied Mycology. Springer Nature Pte Ltd Singapore; 2017.
22. Wamalwa ENI, Muoma J, Muyekho FN, Wekesa C and Ajanga S. Genetic diversity of *Fusarium oxysporum* races associated with cowpea fields in Kakamega County. Journal of Fungal Genomics and Biology. 2018;8(2):156-162. doi:10.4172/2165-8056.1000156.
23. Hussain N, Hussain A, Ishtiaq M, Azam S and Hussain T. Pathogenicity of two seed-borne fungi commonly involved in maize seeds of eight districts of Azad Jammu and Kashmir, Pakistan. African Journal of Biotechnology. 2013;12(12):1363-1370.
24. Mehl J, Wingfield MJ, Roux J and Slippers B. Invasive everywhere? Phylogeographic analysis of the globally distributed tree pathogen *Lasiodiplodia theobromae*. Forests. 2017;8:145-166.
25. Salvatore MM, Andolfi A and Nicoletti R. The thin line between pathogenicity and endophytism: the case of *Lasiodiplodia theobromae*. Agriculture. 2020;10:488-509.
26. Twumasi P, Ohene-Mensah G and Moses E. The rot fungus *Botryodiplodia theobromae* strains cross infect cocoa, mango, banana and yam with significant tissue damage and economic losses. African Journal of Agricultural Research. 2014;9(6):613-619.
27. Shah MD, Verma KS, Singh Kand Kau, R. Morphological, pathological and molecular variability in *Botryodiplodia theobromae* (Botryosphaeriaceae) isolates associated with die-back and bark canker of pear trees in Punjab, India. Genetics and Molecular Research. 2010;9(2):1217-1228.
28. Bautista-Baños S, Bosquez-Molina E and Barrera-Necha LL. *Rhizopus stolonifer* (soft rot) - postharvest decay. Academic Press, San Diego; 2014. doi:10.1016/b978-0-12-411552-1.
29. Kubicek CP. Fungi and Lignocellulosic Biomass. Wiley, New York; 2013.
30. Rovenich H, Boshoven BP and Thomma JC. Filamentous pathogen effector functions: of pathogens, hosts and microbiomes. Current Opinion in Plant Biology. 2014;20C:96-103.
31. Giraldo MC, Dagdas YF, Gupta YK, Mentlak TA, Yi M, Martinez-Rocha AL, Saitoh H, Terauchi R, Talbot NJ and Valent B. Two distinct secretion systems facilitate tissue invasion by the rice blast fungus *Magnaporthe oryzae*. Nature Communications. 2013;4:1996. <https://doi.org/10.1038/ncomms2996>.
32. Manyangarirwa W, Bwerazuva T and Mortensen CN. Seed-borne fungal and bacterial pathogens on farm-retained cowpea seeds from Zimbabwe. African Crop Science Society. 2009;9:595-599.
33. Claudius-Cole AO, Ekpo EJA. and Schilder AMC. Evaluation of detection methods for cowpea bacterial blight caused by *Xanthomonas axonopodis* pv *vignicola* in Nigeria. Tropical Agricultural Research & Extension. 2014;17(2):77-85.
34. Okechukwu RU, Ekpo EJA and Okechukwu OC. Seed to plant transmission of *Xanthomonas campestris* pv. *vignicola* isolates in cowpea. African Journal of Agricultural Research. 2010;5(6):431-435.

456 35. An S, Potnis N, Dow M, Vorholter F, He Y, Becker A, Teper D, Li Y, Wang N, Bleris L
457 and Tang J. Mechanistic insights into host adaptation, virulence and epidemiology of the
458 phytopathogen *Xanthomonas*. FEMS Microbiology Reviews. 2020;44(1):1–32.
459

460
461