

## Original Research Article

### Estimation of Carbon Sequestration in a Forest: A case study of Bhawal National Park, Gazipur

---

#### ABSTRACT

Carbon sequestration is a global strategy of reducing atmospheric carbon to tackle global warming and climate change. Since the industrial revolution, the atmospheric carbon has been concentrating, therefore, global warming is speeding up and ecosystems are destroyed which increases the threat for global environmental sustainability. To limit global warming to 1.50 C, COPs recommendation to be implemented particularly stop and restore forest loss, and line up the financial sector with net zero by 2050. Also, the Kyoto protocol explore the opportunity of carbon trading for developing countries like Bangladesh which is also reinforced by the net zero strategy of IPCC. To assess the forest carbon sequestration potentials, Bangladesh needs to accurately measure its storage carbon using statistical validated methods. Compared to ideal situations considering size and population, forest land is inadequate in Bangladesh as a result, to get global benefit, the country should manage the carbon pool by assessing periodically and managing accordingly. This study follows the randomized block design for sampling and data collection from 9 plots of 100 m<sup>2</sup> each. Each individual tree of a sample plot measured and recorded and a total 240 trees measured to get its GBH and individual height. Study area covers the core area of Bhawal National Park which is a planted forest dominated by Sal tree (*shorea robusta*). From the study it has been observed that 3.345-million-ton Carbon sequesterate (equivalent to 12.276-million-ton CO<sub>2</sub>) in the core area of Bhawal National Park which is 940 hectares. Very few older plants are found in the Bhawal national park, most of them are coppicing plants. This study report might be beneficial for the potential forest researchers to estimate sequesterate carbon and to achieve net zero of carbon emission also, helps to create a foundation of carbon trading, therefore, the country might be benefited.

*Keywords:* sequestration, global warming, climate change, net zero strategy, IPCC, Kyoto protocol etc.

#### 1. INTRODUCTION

Carbon sequestration is a global emerging concern as strategy of reducing atmospheric carbon to tackle global warning and climate change. Since industrial revolution (1750) the increase in atmospheric CO<sub>2</sub> concentration by 31% from the combustion of fossil fuel and

change in land use pattern as a result necessitates identification of strategies for mitigating the threat of global warming (Lal, 2004). Likewise, there is a scientific consensus that global climate is changing in part as a result of anthropogenic activities (IPCC, 2001; Ravindranath et al., 1997; Negi et al., 2002) and those the social and economic costs of abating and of responding to its impacts will be big (OECD, 2000). Forests play an important role in the global climate system. In the meantime, deforestation contributes 18% all forms of CO<sub>2</sub> emissions worldwide (Stern, 2006). Developing countries like Bangladesh are mostly affected by the consequences of Global Warming (Anon, 2000).

Bangladesh is a signatory of the Kyoto Protocol to reduce global greenhouse gas emissions by defined targets below a 1990 baseline level during the first commitment period of 2008 to 2012. Several provisions of the Kyoto agreement may affect how forestry is practiced in Bangladesh. Verifiable changes in carbon sequestration from afforestation, deforestation, and reforestation since 1990 could be counted as credits or debits if the result directly from anthropogenic activities. Other articles establish mechanisms for trading carbon credits among parties to the protocol (Coeli M. Hoover, 2000).

Houghton and Nassikas (2018) emphasized on protecting deforestation and encouraging secondary forests to grow to reduce atmospheric carbon by about 120 PgC between 2016 and 2100. As forests, trees, or vegetation acts as the carbon storage, these could be used in devising mechanisms to cope with the unexpected impact of global climate change (Rahman, Sarker, & Hossen, 2013; Shin, Miah, & Lee, 2007). To achieve full carbon mitigation potential requires estimation of country-based carbon stocks through statistically valid methods (Mahmood, Siddique, & Akhter, 2016). As a cosigner of the Kyoto protocol, Bangladesh needs accurate estimations of carbon stocks throughout the country comprehensively to implement carbon trading CDM projects (Saatchi et al., 2011). Accordingly, the Government of Bangladesh took initiative to develop carbon stock database of whole country and prepared the REDD+ Readiness Roadmap (BFD, 2018). The reliable quantification of vegetative carbon sequestration will help the researcher, entrepreneur and policy makers of Bangladesh to sell certified emission reduction to developed countries (Ahammad, Hossain, & Husnain, 2014; Ahmed & Glaser, 2016) in global carbon markets under REDD+ and CDM (Al-Amin, 2016; Shin, Miah, & Lee, 2008) as they need to counterbalance their higher per capita carbon emission. Carbon stock estimation includes quantification of soil organic carbon, carbon in living trees, undergrowth vegetation, woody debris, and litters of forest floor in form of above-ground carbon and below-ground carbon (Gibbs, Brown, Niles, & Foley, 2007; Patra et al., 2013). In Bangladesh, researchers have estimated carbon stocks using different methods and have developed allometric models for few forest species. However, most of the estimation is limited to few variables that miss the enormous pools of ecosystem carbon (Donato et al., 2011).

Existing forests of Bangladesh absorb more carbon than the total carbon produced in the country. As a cosigner of 'Kyoto Protocol' the country could be asked for compensation from the developed countries for their extra carbon absorbed by country's forest (Mukul, 2007). According to Forest Department (FD) and some other sources (Hossain, 2005; Khan et al., 2007; Mukul et al., 2008) the area of forest land is about 2.53 million ha which is approximately 17.5% of the country's total surface area however the Forest Resource Assessment 2005 reveals it is only about 0.871 million ha (FAO, 2006; 2007).

Sal forests cover vast area of central and eastern part of Bangladesh which constitute a unique biological diversity that constitute 70- 75% "Sal" trees (*shorea robusta*) including several other valuable trees and herbaceous species (Ahmed, 2005). Agriculture is the main land-use in Bangladesh, comprising nearly 65% of the country's land area, followed by forests (17.5%), urban areas (7.9%), and water bodies (9.6%) (Dey et al. 2012). The 17.5% of forest area equivalent to about 2.53 million hectares (10.53% of the country's total land) in Bangladesh (Khan et al. 2007). Among 2.53 million hectares, 1.53 million hectares are under the jurisdiction of the Bangladesh Forest Department (FD) (Alamgir and Turton 2014) and rests are unclassified state forests (0.73 million hectares) under the control of district

administration and homestead forests (0.27 million hectares) owned by smallholder landowners (Khan et al. 2007). Most of the sal forests of Bangladesh are regenerated secondary forests (53%), followed by primary forests (30%) and planted (17%) forests (Mongabay 2014). The deciduous Sal forests are located on relatively plain lands in the central districts of Bangladesh and are dominated mainly by Sal (*Shorea robusta*). The sal forest covers 0.12 million ha which is 7.9% of total country forest and 0.8% of total country land.

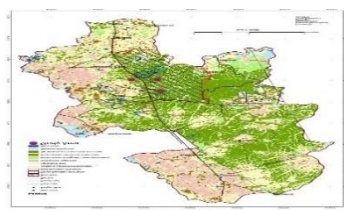
Accurate tree biomass estimation is critical and vital for calculating carbon stock as well as for studying climate change, monitoring of forest health, productivity, nutrient cycling and budget etc. (Mohammad Raqibul Hasan Siddique, 2021). The IPCC default emission factors was applied, where it is assumed that soil and dead organic matter do not change with forest management practice, type of forest, or disturbance regime (Sun Jeoung Lee, 2018). Sources and sinks of carbon associated with forests depend strongly on the management regime and spatial patterns in potential productivity (DAVID P. TURNER, 2004).

The number of specific allometric equations for Bangladesh has increased, among them half of the models lack statistical validity, Mahmood et al. (2016) concluded that only 5% tree species and shrubs in Bangladesh have allometric models to estimate the biomass (Chanda et al., 2016). Carbon sequestration rate under the same environment exclusively depends on the species (Nahiyon, Baidya, Dip, Sultan, & Ahmed, 2017) which prescribed the need to develop species-specific localized allometric equations (Aysha et al., 2015; Mukul et al., 2014). Most of the studies, counted below-ground carbon stock as 15% of above-ground carbon stock (Miah, Uddin, Bhuiyan, Koike, & Shin, 2009; Ullah & Al-Amin, 2012), but in another study, it was found 14% in real field (Rahman et al., 2015) which added further errors into the estimates.

## 2. MATERIAL AND METHODS

### 2.1 Description of the study site

The study area “Bhawal National Park” was established in 1974 which officially declared as National Park in 1982 under the Wildlife Act of 1974. By origin, it is a planted forest and was the part of Madhupur forest under the rule of Bhawal Estate. It is located between 24°5'45"N 90°24'14"E in Gazipur, Dhaka Division of Bangladesh. The core area of the Bhawal national park covers 940 hectares but extends to 5,022 ha of surrounding forest. Most of this area was covered by forests fifty-five years ago and the dominant species was Sal (*Shorea robusta*). The purpose of this forest is to maintain important habitats as well as to provide opportunities for recreation. It has been kept under IUCN Management Category V, as a protected landscape.



### 2.2 Biomass sampling and sampling size determination

The object of sampling is to secure a sample which will be represented the entire population and reproduce the important characteristics of the population as closely as possible. A sampling plots is determined by the size of sampling units, number of sampling units, the distribution of the sampling units over the entire area, the type and method of measurement in the selected units and the statistical procedures for analyzing the collected data.

Under this study, selected 3 spots within the core area of Bhawal National Park through transect walk at least 100 meter inside from road site. Then, demark serially 5 plots in a straight-line each plot size will be 10 mX10 m= 100 m<sup>2</sup>. Through lottery, select 3 plots among 5 plots for primary data collection. Likewise, collect data from 3 sites and 3 plots from each spot therefore, measure DBH and tree heights from total 9 plots of 100 m<sup>2</sup> size each.

In each plot, count the number of trees (sal) and other species. Also count DBH and height of each individual tree of the plot. Likewise, counted 3 random plots of each 3 sites.

### 2.3. Research Approach

This research is based on quantitative approach as we take sample plots and trees for further calculation, measurement of DBH, and height. It is the general approach to estimate above ground biomass before statistical analysis. There are several research works have already done by using that approach. This approach is used because this is more convenient and easier to handle into a forest cover area moreover identifying sample and trees are also easy to count.

### 2.4 Data Collection

To complete this project, we required two types of data, one is primary data and another is secondary data. Data and its collection methods are discussed below

#### 2.4.1 Primary Data

Data, those are collected from direct field level and those were not used before is called primary data. To complete study, tree diameter, tree height, GPS reading is needed that's why we collect those data from this site by manually. By using diameter tape, we measure diameter at breast height (1.32 m above from the ground) of trees in cm, height is measured by Michael Kuhn's Stick method in meter, measurement tape is used to measure the plot size and an Android GPS is also used to get geographic location like altitude, latitude, elevation etc.

#### 2.4.2 Secondary Data

The secondary data like total area of plantation, tree species, history of management by which we can get to determine the age of tree and by this way we can easily know about growth and height relationship, height and biomass relationship and the growth and development of those site. I have collected official data from the forest office of Dhaka division, online resources through internet browsing, collect opinion of local denizens and forest villagers, etc.

### 2.5 Biomass Calculation

#### 2.5.1 Biomass and Carbon calculation

Indeed, tree biomass includes above ground biomass including shoots, branch, twigs etc. and the below ground biomass includes roots biomass.

**Calculation of Estimation of carbon of above ground biomass:** The above ground tree biomass (AGTB) was estimated for carbon estimation by multiplying the bio-volume with the green wood density of particular tree species. Tree bio-volume (TBV) value was calculated by multiplying of DBH and height of tree species to factor 0.4 (Pandya et al., 2013). Wood density (WD) was found from the Global wood density database (Zanne et al., 2009). The height of trees was measured by Michael Kuhn's Stick method, while the DBH was determined by measuring tree girth at breast height (GBH), approximately 1.32m from the ground. The GBHs of trees was measured directly from tree using measuring tape. The DBH of the tree was measured by dividing GBH by  $\pi$  (3.14) value i.e.,  $GBH/3.14$ .

$$\text{Bio-volume (TBV)} = 0.4 \times (\text{DBH})^2 \times H$$

$$\text{AGTB} = \text{TBV} \times \text{WD}$$

**Calculation of Estimation of below ground biomass:** The below ground tree biomass (BGTB) was calculated by multiplying the above ground biomass (AGTB) by root-to-shoot ratio of 0.26 (because the bhawal national park forest is a sub-tropical moist forest), (Hangarge et al., 2012).

$$\text{BGTB} = \text{AGTB} \times 0.26$$

**Calculation of Estimation of total biomass:** The total tree biomass was then calculated as (Sheikh et al., 2011):

$$\text{Total tree biomass (TTB)} = \text{AGTB} + \text{BGTB}$$

**Calculation of Estimation of carbon storage:** Generally, for any plant species 50% of its biomass is considered as carbon (Pearson et al., 2005). Therefore, the total biomass carbon was calculated as:

$$\text{Carbon storage} = \text{Biomass} \times 50\% \text{ or } \text{Biomass}/2$$

**Calculation of estimation of CO<sub>2</sub> equivalent:** The CO<sub>2</sub> equivalent was calculated as following equation (Johnson and Coburn, 2010):

**1 ton of carbon = 3.67 tons of CO<sub>2</sub> equivalent.**

The estimated data was then compiled and tabulated and analyzed by statistically validated methods. The Microsoft Office Excel 2010 and SPSS software was used to analyze the data.

### 3. RESULTS AND DISCUSSION

There are two methods of carbon estimation in tree species, destructive method and non-destructive method approved by many researchers. The project employed the non-destructive method for carbon estimation, in this method the study doesn't need to harvest the entire bio-volume and sacrifice the tree.

A total 240 trees were recorded from 9 sampling plots of 100 m<sup>2</sup> (10m x 10m) each of Bhawal national park. The study conducted in the core area of Bhawal National Park where 3 plots were located in the Plot 1 (P1)- Coordinate-24°05'26.3"N 90°24'04.1"E, Plot 2 (P2)- Coordinate- 24°05'31.9"N 90°24'11.2"E, and Plot 3 (P3)- Coordinate- 24°05'01.7"N 90°23'45.9"E.

#### 3.1: Results on Biomass Estimation

The study collected data to calculate above ground biomass and below ground biomass to find total biomass. Both biomasses could contain carbon which the study estimated.

##### 3.1.1 Estimation of Above Ground Tree Biomass (AGTB)

The graph shows the comparison of tree bio volume found in different sample plots. It represents a strong relationship between tree diameter, height and above ground biomass. Highest biomass found in the P1R1 (2278.35 kg/plant) and lowest in the P2R1 (1969.88 kg/plant). The diameter of individual plants was found higher in plot 1 than plot 2 with tree height because plot 1 was located inside the park and plot 2 was near the road side.

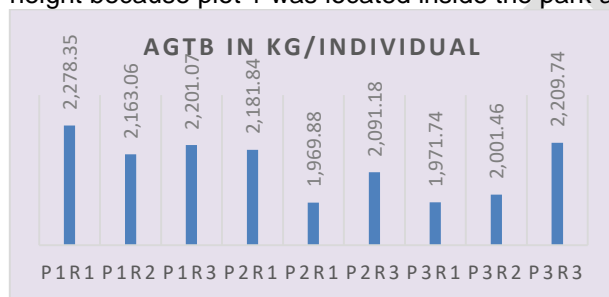


Figure 1: Graphical presentation of Average Above Ground Tree Biomass (AGTB) in different sample plots

##### 3.1.2 Estimation of Below Ground Tree Biomass (BGTB)

The graph shows that the below ground biomass is higher in the P1R1 (592.37 kg/individual) and lowest in the P2R1(512.17 kg/individual). The cause behind the variation may be for the tree diameter and height, if any plant has higher girth and height that means the plant has more root biomass. Moreover, the below ground biomass calculated from the above ground biomass, therefore which plot has more AGTB, certainly that will have more BGTB.

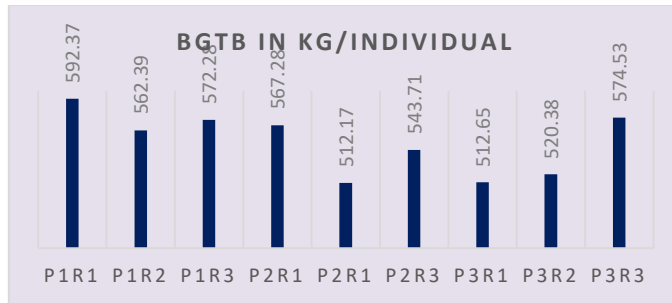


Figure 2: Average Below Ground Tree Biomass in different sample plots

### 3.1.3 Estimation of Total Tree Biomass (TTB)

The graph shows the total tree biomass found in the P1R1 (2,870.72 kg/individual) and lowest in the P2R1 (2,482.05 kg/individual). The reason may be the same that the growth of plot 1 trees is higher than plot 2 therefore, total biomass found higher in the plot 1.

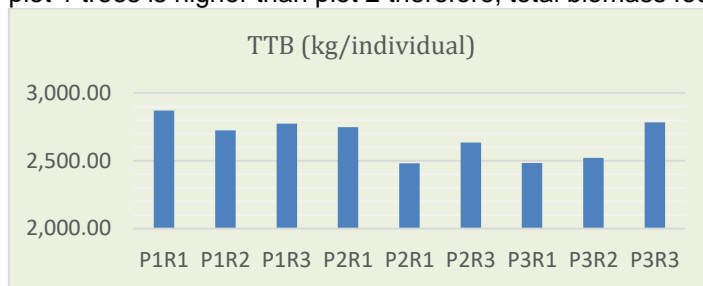


Figure 3: Total Tree Biomass (TTB) found in different sample plots

## 3.2 Results on Storage Carbon Estimation in different Plots

The study calculated total storage carbon in the total biomass found in the 240 trees of Bhawal National Park. Among the 240 trees other tree species number was minor and statistically insignificant. It has found Sal (*Shorea robusta*)-237, Arjun (*Terminalia arjuna*)- 1, Bohera (*Terminalia belirica*)-1, Acacia (*Acacia auriculiformis*)-1, among the 9 sample plots. Also, the Arjun, Bohera and Acacia DBH were 49, 51 and 71 cm; and tree height were 22.6, 20.3 and 19.8 meter whereas average (of 240 trees) DBH was 57.33 and average tree height was 21.75. Based on the primary data, the study estimated storage carbon per hectare.

### 3.2.1 Carbon Storage Estimation of Above Ground Tree Biomass (AGTB)

The graph shows that the storage carbon found highest in the P1R1(1139.175 kg/plant) and second highest in the P3R3 (1104.87kg/plant) and lowest in the P2R1 (984.94 kg/plant). The storage carbon depends on the tree bio-volume and wood density therefore found more in the plot where biomass is also higher compared to other plots.



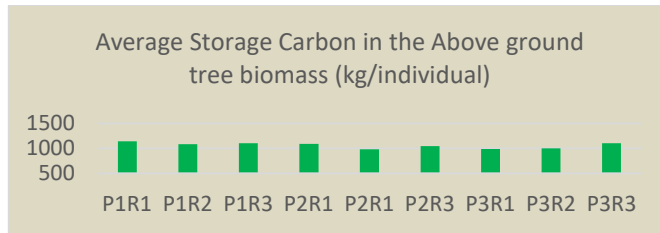


Figure 4: Storage carbon found in the above ground biomass in different sample plots

### 3.2.2 Carbon Storage Estimation of Below Ground Tree Biomass (BGTB)

The graph shows that the storage carbon in the below ground biomass is highest in the P1R1 (296.185 kg/tree), second highest the P3R3(287.265 kg/tree) and lowest in the P2R1 (256.085 kg/tree). It may be for the storage carbon calculated from the tree bio volume, where girth and height are major factors that are found highest in the plot 1, then plot 3 and then plot 2.

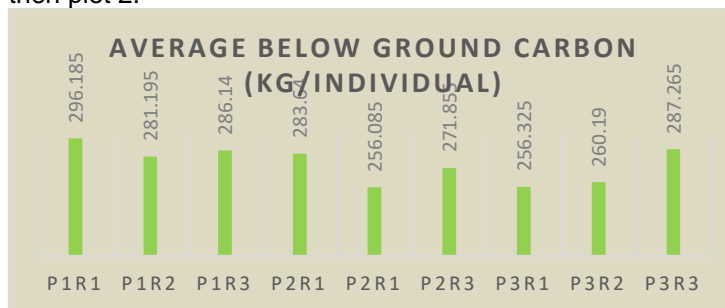


Figure 5: Storage carbon in the below ground biomass in different sample plots

### 3.2.3 Carbon Storage Estimation of Total Tree Biomass (TTB)

The graph shows that the total storage carbon is higher in the P1R1(1435.36 kg/tree) and second highest in the P3R3 (1392.135 kg/tree) and lowest in the P2R1 (1241.025 kg/tree). The wood density (0.73) is higher in the Sal (*shorea robusta*) compared to other forest trees as a result, storage carbon found higher in the plot 1.

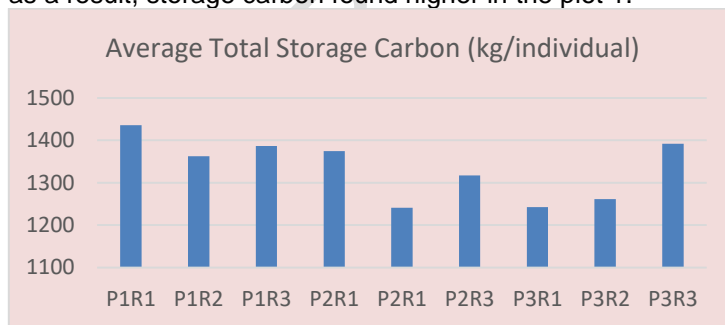


Figure 6: Total carbon storage in the sample plots

## 3.3 Estimation of CO2 Equivalent

The study calculated total storage carbon first, then convert into equivalent CO2.

### 3.3.1 Estimation of CO2 Equivalent of Above Ground Tree Biomass (AGTB)

The graph shows CO2 sequestrate highest in P1R1 (3839.02 kg/tree) and lowest in P2R1 (3319.248 kg/tree) in the above ground biomass of a tree. Those trees biomass is higher, they could sequestrate more carbon.

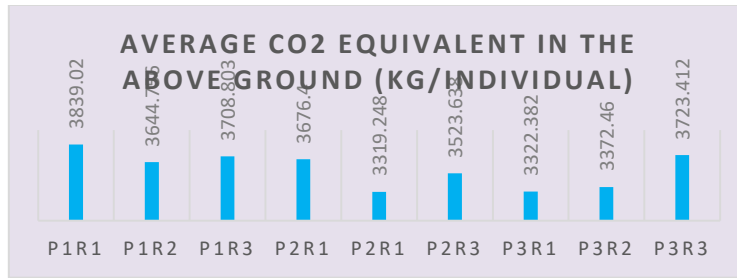


Figure 7: CO2 sequestration in the different sample plots

### 3.3.2 Estimation of CO2 Equivalent of Below Ground Tree Biomass (BGTB)

The graph shows that, CO2 sequestration found highest in the P1R1 (1086.999 kg/tree) and lowest in the P2R1 (939.832 kg/tree) in the below ground biomass. CO2 sequestration calculate from the below ground biomass, result which tree has higher biomass in the below ground they can sequester more carbon.

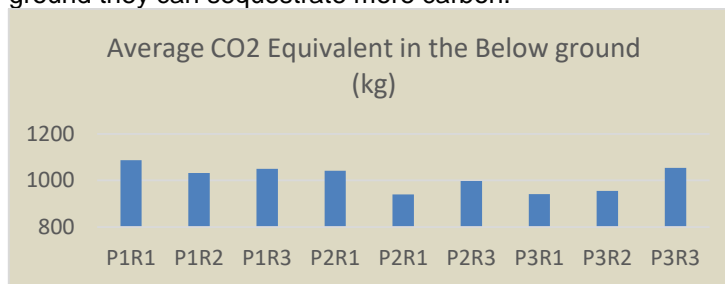


Figure 8: Graphical presentation of CO2 sequestrate in the different sample plots in the below ground biomass

### 3.3.3 Estimation of CO2 Equivalent in the Total Tree Biomass (TTB)

The graph shows that, total CO2 sequestrate in the P1R1 (5267.771 kg/tree) and lowest in the P2R1 (5044.635 kg/tree). However, which trees biomass is higher, they could sequester more carbon.

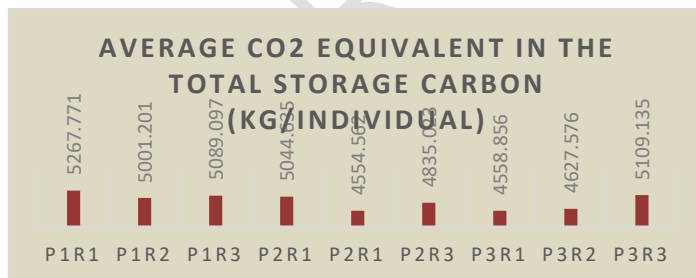


Figure 9: Total Carbon sequestrate in different sample plots

## 3.4 Carbon Stock Calculation per hectare Area of Bhawal National Park

A total 240 trees were recorded from 9 sampling plots of 100 m<sup>2</sup> each in the Bhawal National Park Forest range. And the result and discussion chapter analyze the biomass and storage carbon for individual plants. Based on the individual tree data, the estimation of carbon storage are as follows

The project studied 3 plots in the different locations of Bhawal National Forest and recorded data from 9 plots of 100m<sup>2</sup> each. Therefore, 240 trees were found in the 900 m<sup>2</sup> and we know, 1 ha= 10000 m<sup>2</sup>. So, the average total number of trees in one-hectare is 2666.



Average total tree biomass found per sal (*shorea robusta*) tree was 2669.56 kg, so total biomass found per hectare was **7117046.96 kg or 7117.04 ton/ha**.

Average storage carbon in individual Sal tree in the recorded plots (900m<sup>2</sup>) is 1334.782 kg/tree and the total number of trees in one-hectare is 2666, so total storage carbon found in the Bhawal National Forest is 3558528.812 kg or **3558.53 ton/ha**.

And we know One ton of carbon = 3.67 tons of CO<sub>2</sub> equivalent, therefore equivalent **CO<sub>2</sub> is 13059.80 ton/ha**.

The core area of Bhawal National Park is 940 ha, therefore total storage carbon estimated as **3.345 million ton and 12.276-million-ton CO<sub>2</sub>**.

### 3.5 Correlation analysis of Tree Biomass, Tree height and Diameter

The correlation between tree biomass, tree height and diameter at breast height analyzed using SPSS to find the correlation among parameters. The auto generated table showed the significant correlation (>0.5) between tree biomass, DBH (0.886) and height (0.711) which means there is a strong correlation between biomass, tree height and diameter.

Correlations		Biomass	DBH	Height
Biomass	Pearson Correlation	1	.886**	.711*
	Sig. (2-tailed)		.003	.048
	N	8	8	8
DBH	Pearson Correlation	.886**	1	.350
	Sig. (2-tailed)	.003		.395
	N	8	8	8
Height	Pearson Correlation	.711*	.350	1
	Sig. (2-tailed)	.048	.395	
	N	8	8	8

\*\* . Correlation is significant at the 0.01 level (2-tailed).

\* . Correlation is significant at the 0.05 level (2-tailed).

Figure 10: Table of correlation analysis

## 4. CONCLUSION

The estimation of sequestrate carbon in each natural, planted or homestead forest of a country is becoming more important considering the global action of tackling global warming and climate change. If the global effort wants to limit global temperature increment by 1.5° C, it needs to control emission of greenhouse gasses including carbon by any means. There are two ways to offset atmospheric carbon, one is reduced carbon emission from anthropogenic action at source and another is sequestration (creating a large reservoir of storage carbon) to balance emission. The sequestration strategies may be natural or mechanical, where Carbon sequestration in living forest may be a good strategy as natural. There are different types of natural or planted forest available in the earth, however, the study recommended increasing forest area with native species only and improving the management practice also to get large reservoirs of carbon. Bhawal national park is a regenerated secondary forest, therefore, afforestation and reforestation projects with tree species which sequesters more carbon should be implemented in the deforested area keeping all environmental parameters in mind. The study encourages researchers to develop allometric equations for its native species. It has concluded that 12.276-million-ton CO<sub>2</sub> offset in the 940-ha core area of Bhawal National Park and it can potentially increase its storage capacity by improving forest management practice. Comparing population and size Bangladesh has inadequate forest land, therefore need to manage existing forest intensively and underutilized areas need to be brought under the carbon sequestration pool. Bangladesh forest absorbed more carbon than total emission in the country therefore, the country has good potential to earn foreign currency from carbon trading. Finally, the study is

suggesting to perform further study incorporating herb, shrub and soil carbon in order to gain a complete estimation of carbon storage in Bhawal national park.

## REFERENCES

- A. Ramachandran, S. J. (2007). Carbon sequestration: estimation of carbon stock in natural forests using geospatial technology in the Eastern Ghats of Tamil Nadu, India . *CURRENT SCIENCE*, VOL. 92, NO. 3.
- Ahammad, R., Hossain, M. K., & Husnain, P. (2014). Governance of forest conservation and co-benefits for Bangladesh under changing climate. *Journal of Forestry Research*, 25, 29–36.
- Ahmed, N., & Glaser, M. (2016). Coastal aquaculture, mangrove deforestation and blue carbon emissions: Is REDD+ a solution? *Marine Policy*, 66, 58–66.
- Ahmed, D. K. (2005). Wildlife Biodiversity in Bhawal National Park: Management . *Our Nature*, 3:83-90.
- Alamgir, M., Turton S.M., 2014. Climate change and organic carbon storage in Bangladesh forests. In: Tuteja, N., Gill, S.S. (eds.). Climate change and plant abiotic stress tolerance. *Wiley-VCH Verlag*.
- Al-Amin, M. (2016). Forest carbon stock measurement to management: Perspective REDD+ in Bangladesh. *Indian Forester*, 142, 86–92.
- Anon. 2000. Environmental Matters. World Bank, 65 pp.
- Anna Dey, M. I. (2014). Above Ground Carbon Stock Through Palm Tree in the Homegarden of Sylhet City in Bangladesh. *Journal of Forest and Environmental Science*, Vol. 30, No. 3, pp. 293-300.
- Aysha, A., Hena, M. K. A., Mishra, M., Nesarul, M. H., Padhi, B. K., Mishra, S. K., Masum, M. B. (2015). Sediment and carbon accumulation in sub-tropical salt marsh and mangrove habitats of north-eastern coast of Bay of Bengal, Indian Ocean. *Inter Journal Fisheries Aquat Sciences*, 2, 184–189.
- Bass, S., Dubois, O., Moura, C.P., Pinard, M., Tipper, R. and C. Wilson. 2000. Rural livelihood and carbon management. *IIED Natural Resources Issues Paper No.1*. London, IIED. 120 pp.
- BFD. (2018). Official website of Bangladesh Forest Department.
- Borunda, A. (2019, March 19). This young whale died with 88 pounds of plastic in its stomach, National Geographic .
- Bosetti, V., Lubowski, R., Golub, A., Markandya, A., 2009. Linking Reduced Deforestation and a Global Carbon Market: Impacts and Costs, Financial Flows, and Technological Innovations. *Fondazione Eni Enrico Mattei*, Italy.
- Bosquet, P., P. Peylin, P. Ciais, C. L. Quere, P. Friedlingstein, and P. P. Tans. 2000. Regional changes in carbon dioxide fluxes of land and oceans since 1980. *Science* 290:1342–1346.
- Chanda, A., Mukhopadhyay, A., Ghosh, T., Akhand, A., Mondal, P., Ghosh, S., . . . Hazra, S. (2016). Blue carbon stock of the Bangladesh Sundarban mangroves: What could be the scenario after a century? *Wetlands*, 36, 1033–1045.

- Coeli M. Hoover, R. A. (2000). How to Estimate Carbon Sequestration on Small Forest Tracts. *Journal of Forestry*, Carbon Forestry .
- DAVID P. TURNER, M. A. (2004). Monitoring Forest Carbon Sequestration with Remote Sensing and Carbon Cycle Modeling. *Environmental Management*, Vol. 33, No. 4, pp. 457–466.
- Donato, D. C., Kauffman, J. B., Murdiyarso, D., Kurnianto, S., Stidham, M., & Kanninen, M. (2011). Mangroves among the most carbon-rich forests in the tropics. *Nature Geoscience*, 4, 293.
- FAO. 2006. Global Forest Resource Assessment 2005: Progress towards sustainable forest management. FAO Forestry Paper 147, FAO, Rome, Italy, 170 pp.
- FAO. 2007. State of the world's forest 2007. FAO, Rome, Italy, 144 pp.
- Follett, R. F., J. M. Kimble, and R. Lal. 2001. The potential of US grazing lands to sequester soil carbon. Pages 401–430 in R. F. Follett, J. M. Kimble, and R. Lal. Eds, The potential of U S grazing lands to sequester carbon and mitigate the greenhouse effect. Lewis Publishers, Boca Raton, Florida.
- Gibbs, H. K., Brown, S., Niles, J. O., & Foley, J. A. (2007). Monitoring and estimating tropical forest carbon stocks: Making REDD a reality. *Environmental Research Letters*, 2, 045023.
- Grace, J., Lloyd, J., McIntyre, J., Miranda, A.C., Meir, P., Miranda, H.S., Nobre, C., Moncrieff, J., Massheder, J., Malhi, Y., Wright, I., Gash, J., 1995. Carbon dioxide uptake by an undisturbed tropical rainforest in southwest Amazonia, 1992 to 1993. *Science* 270, 778–780.
- Hangarge, L.M., Kulkarni, D.K., Gaikwad, V.B., Mahajan, D.M. and Chaudhari, N. 2012. Carbon sequestration potential of tree species in Somjaichi Rai (Sacred grove) at Nandghur village, in Bhor region of Pune District, Maharashtra State, India. *Ann. Biol. Res.*, 3(7): 3426-3429.
- Hinsley, N. (2015, February 13). The History of Polyethylene. Global Plastic Sheetting .
- Hossain, M.K. 2005. Conversion of dipterocarps-dominant natural forests to short rotation plantations-an unrecoverable threat to the native dipterocarps in Bangladesh. Available online at [http://www.apafri.org/8thdip/Session%204/S4\\_Hossain.doc](http://www.apafri.org/8thdip/Session%204/S4_Hossain.doc); last accessed Jan. 3, 2009
- Houghton, R. A., & Nassikas, A. A. (2018). Negative emissions from stopping deforestation and forest degradation, globally. *Global Change Biology*, 24, 350–359.
- How to Estimate Carbon Sequestration on Small Forest Tracts. (2000). *Journal of Forestry*, carbon forestry.
- Hunt, E. Raymond Jr.; Kelly, Robert D.; Smith, William K.; Fahnestock, Jace T.; Welker, Jeffrey M.; and Reiners, William A., "Estimation of Carbon Sequestration by Combining Remote Sensing and Net Ecosystem Exchange Data for Northern Mixed-Grass Prairie and Sagebrush–Steppe Ecosystems" (2004). Publications from USDA-ARS / UNL Faculty. 306. <https://digitalcommons.unl.edu/usdaarsfacpub/306>
- Hunt, E. R., Kelly, R. D., Smith, W. K., Fahnestock, J. T., & Welker, J. M. (2004). <https://digitalcommons.unl.edu/usdaarsfacpub>.
- IPCC. 2001. Climate Change 2001: Impacts, Adaptation and Vulnerability, contribution of Working Group II to the third assessment report of the IPCC, Cambridge University Press, New York. 188 pp.

- IPCC, Guidelines for National Greenhouse Gas Inventories. *Agriculture, forestry and other land use*, 2006. 4: p. 1-66.
- Islam, M. S. (2013). Estimation of biomass carbon stock at three plantation sites in Sher-E-Bangla agricultural university campus (Master's thesis). Sher-E-Bangla Agricultural University, Dhaka, Bangladesh.
- Jha, M.N., Gupta, M.K., Sexena, A. and K. Rajesh. 2003. Soil organic carbon store in different forest of India. *Indian Forester* 129 (6): 714-721.
- Jaman, M. S., Hossain, M. F., Islam, M. S., Helal, M. G. J., & Jamil, M. (2016). Quantification of carbon stock and tree diversity of homegardens in Rangpur District, Bangladesh. *International Journal of Agriculture and Forestry*, 6, 169–180.
- Johnson, I. and Coburn, R. 2010. Trees for carbon sequestration. Retrieved 19 August, 2012, from [http://www.dpi.nsw.gov.au/data/assets/pdf\\_file/0003/317559/Trees-forcarbon-sequestration.pdf](http://www.dpi.nsw.gov.au/data/assets/pdf_file/0003/317559/Trees-forcarbon-sequestration.pdf)
- Khan, M.A.S.A., Uddin, M.B., Uddin, M.S., Chowdhury, M.S.H., Mukul, S.A., 2007. Distribution and status of forests in the tropic: Bangladesh perspective. *Proc. Pakistan Acad. Sci.*, 44: 145-153.
- Khan, M.A.S.A., Uddin, M.B., Uddin, M.S., Chowdhury, M.S.H. and S.A. Mukul. 2007. Distribution and Status of Forests in the Tropic: Bangladesh Perspective. *Proc. Pakistan Acad. Sci.* 44(2): 145-153.
- Kuhns, 2001 <https://forestry.usu.edu/kids-and-teachers/tree-height>
- Lal M., Nozawa T., Emori S., Harasawa H., Takahashi K., Kimoto M., Abe-ouchi A., Nakajima T., Takemura T., Numaguti A. (2001): Future climate change: Implications for Indian summer monsoon and its variability. *Current Science*, 81: 1196–1207.
- Lal, R. (2004). Soil carbon sequestration to mitigate climate change. *Geoderma*, 1–22.
- LeBlanc, R. (2021, January 16). The Decomposition of Waste in Landfills. A Story of Time and Materials.
- Liu, W. S. (2020). Review on carbon storage estimation of forest ecosystem and applications in China. *Forest Ecosystems*, 7:4 <https://doi.org/10.1186/s40663-019-0210-2>.
- M.R. Ullah, M. A.-A. (2012). Above- and below-ground carbon stock estimation. *JOURNAL OF FOREST SCIENCE*, (8): 372–379.
- McNulty, S. G. (2002). Hurricane impacts on US forest carbon sequestration. *ENVIRONMENTAL POLLUTION*, 116, S17-S24.
- Mahmood, H., Siddique, M. R. H., & Akhter, M. (2016). A critical review and database of biomass and volume allometric equation for trees and shrubs of Bangladesh. IOP Conference Series: *Earth and Environmental Science*, 39, 012057.
- Md. Shawkat Islam Sohel, M. P. (December 2009). The Carbon Sequestration Potential of Forestry Sector: Bangladesh Context. *Journal of Forest Science*, Vol. 25, No. 3, pp. 157~165,.

- Miah, D., Uddin, M. F., Bhuiyan, M. K., Koike, M., & Shin, M. Y. (2009). Carbon sequestration by the indigenous tree species in the reforestation program in Bangladesh *Aphanamixis polystachya* wall. and Parker. *Forest Science and Technology*, 5, 62–65
- Miriam Münnich Vass, K. E. (2016). Is forest carbon sequestration at the expense of bioenergy and forest products cost-efficient in EU climate policy to 2050? *Journal of Forest Economics*, <http://www.elsevier.com/locate/jfe>.
- Mohammad Raqibul Hasan Siddique, Mahmood Hossain, Md. Bakhtiar Nur Siddiqui, S.M. Rubaiot Abdullah, Mariam Akhter, Gael Sola, Md. Zaheer Iqbal, Matieu Henry, Conventional and additive models for estimating the biomass, carbon and nutrient stock in individual *Shorea robusta* Gaertn. f. tree of the Sal forests of Bangladesh, *Environmental Challenges* (2021), doi: <https://doi.org/10.1016/j.envc.2021.100178>
- Mongabay, 2014. Bangladesh: Environmental Profile. Available online at: <http://rainforests.mongabay.com/deforestation/archive/Bangladesh.htm> (Date of access: May, 2014). (Robin L. Chazdon, 2016 )
- Mukul, S.A., Uddin, M.B., Uddin, M.S. and M.A.S.A. Khan. 2008. Protected areas of Bangladesh: current status and efficacy for biodiversity conservation. *Proc. Pakistan Acad. Sci.* 45(2): 133-140.
- Mukul, S. A., Biswas, S. R., Rashid, A. Z. M., Miah, M. D., Kabir, M. E., Uddin, M. B., . . . Chowdhury, M. S. H. (2014). A new estimate of carbon for Bangladesh forest ecosystems with their spatial distribution and REDD+ implications. *International Journal of Research on LandUse Sustainability*, 1, 33–41.
- Mukul, S.A. 2007. Biodiversity Conservation and Sustainable Development in Bangladesh: An overview of the present status, management problems and future prospects. 28p. Available online at <http://www.mtnforum.org/rs/ol/browse.cfm?tp=vd&docid=1159>. Last accessed, 18 march 2009.
- Murray, B., Lubowski, R., Sohngen, B., 2009. Including International Forest Carbon Incentives in Climate Policy: Understanding the Economics. Nicholas Institute for Environmental Policy Solutions. Duke University.
- Murray, Brian C.; McCarl, Bruce A.; Lee, Heng-Chi (2003) : Estimating leakage from forest carbon sequestration programs, Research Report, No. 2004-3, The University of Western Ontario, Department of Economics, London (Ontario)
- Nahiyan, M. T., Baidya, D., Dip, A. D., Sultan, M. Z. B., & Ahmed, J. U. (2017). CO2 sequestration by tree plantation in Bangladesh: Opportunities and challenges. International conference on mechanical engineering and renewable energy 2017 (ICMERE2017), 18 – 20 December, 2017, Chittagong, Bangladesh.
- Negi, J.D.S., Manhas, R.K. and P.S. Chuhan. 2002. Carbon sequestration through community-based forest management-A case study from Sambalpur Forest Division, Orissa. *Indian Forester* 129 (6): 735-738.
- OECD. 2000. Long-term Strategies for Cooperation with Developing Countries, Working Paper No. 37, OECD, Paris.
- P. K. Ramachandran Nair, B. M. (2009). Agroforestry as a strategy for carbon sequestration. *J. Plant Nutr. Soil Sci.*, 172, 10–23.

- Pandya, I.Y., Salvi, H., Chahar, O. and Vaghela, N. 2013. Quantitative analysis on carbon storage of 25 valuable tree species of Gujarat, Incredible India. *Indian J. Sci. Res.*, 4(1): 137-141.
- Patra, P. K., Canadell, J. G., Houghton, R. A., Piao, S. L., Oh, N. H., Ciais, P., . . . Bhattacharya, T. (2013). The carbon budget of South Asia. *Biogeosciences*, 10, 513.
- Paustian, K., C. V. Cole, D. Sauerbeck, and N. Sampson. 1998. CO<sub>2</sub> mitigation by agriculture: an overview. *Climatic Change* 40:135–162.
- Pearson, T.R.H., Brown, S. and Ravindranath, N.H. 2005. Integrating carbon benefits estimates into GEF Projects, UNDP, GEF, 1-56.
- Phillips, O.L., Malhi, Y., Higuchi, N., Laurance, W.F., Núñez, P.V., Vásquez, R.M., Laurance, S.G., Ferreira, L.V., Stern, M., Brown, S., Grace, J., 1998. Changes in the carbon balance of tropical forests: evidence from long-term plots. *Science* 282, 439–442.
- Rahman, M., Sarker, M. H., & Hossen, T. (2013). Effects of human induced activities on carbon emission in Chittagong District, Bangladesh. *International Journal of Agriculture and Forestry*, 3, 71–76.
- Rahman, M. M. (2015). Carbon and nitrogen dynamics and carbon sequestration in soils under different residue management. *The Agriculturists*, 12, 48–55.
- Ravindranath N.H., Somashekhar B.S., Gadgil M. (1997): Carbon flows in Indian forests. *Climate Change*, 35: 297–320.
- Richard Birdsey, \*. K. (2006). Forest Carbon Management in the United States: 1600–2100. *J. Environ. Qual.*, VOL. 35.
- Robin L. Chazdon, 1. E. (2016 ). Carbon sequestration potential of second-growth forest regeneration in the Latin American tropics. *Science Advance*, 2.
- Ruben N. Lubowski, A. J. (January 2005). Land-Use Change and Carbon Sinks: Econometric Estimation of the Carbon Sequestration Supply Function. Resources for the Future, Discussion Paper 05-04.
- Saatchi, S. S., Harris, N. L., Brown, S., Lefsky, M., Mitchard, E. T. A., Salas, W., . . . Morel, A. (2011). Benchmark map of forest carbon stocks in tropical regions across three continents. *Proceedings of the National Academy of Sciences*, 108, 9899–9904.
- Schoene, D. 2002. Assessing and reporting forest carbon stock changes: a concerted effort. *Unasylva* 210 (53): 76-81.
- Sheikh, M.A., Kumar, M., Bussman, R.W. and Todaria, N.P. 2011. Forest carbon stocks and fluxes in physiographic zones of India. *Carbon Balanc. Manage.*, 6:15.
- Shin, M. Y., Miah, M. D., & Lee, K. H. (2008). Mitigation options for the Bangladesh forestry sector: Implications of the CDM. *Climate Policy*, 8, 243–260.
- SINGH, M. L. (2000). CARBON SEQUESTRATION POTENTIAL OF INDIAN FORESTS. *Environmental Monitoring and Assessment*, 60: 315–327.



- Smith, P., Powlson, D. S., Glendining, M. J. and Smith, J. U. 1998. Preliminary estimates of the potential for carbon mitigation in European soils through no-till farming. *Global Change Biology*. 4 (6), pp. 679-685. <https://doi.org/10.1046/j.1365-2486.1998.00185.x>
- Stern, N. 2006. Report of the Stern Review: The Economics of Climate Change. HM Treasury: London.
- Sun Jeoung Lee, J. S. (2018). Estimation of Forest Carbon Stocks for National Greenhouse Gas Inventory Reporting in South Korea. <http://www.mdpi.com/journal/forests>, 9, 625; doi:10.3390/f9100625.
- Ullah, M. R., & Al-Amin, M. (2012). Above-and belowground carbon stock estimation in a natural forest of Bangladesh. *Journal of Forest Science*, 58, 372–379.
- USDA Forest Service. 2001. RPA Assessment of forest and range lands. Report No. FS-687. USDA Forest Service, Washington, D/C, 78 pp.
- UN FCCC. 1992. United Nations Framework Convention on Climate Change; available at [www.unfccc.de/resource/conv/index.html](http://www.unfccc.de/resource/conv/index.html).
- World Bank, 2014. World Development Indicators: Bangladesh. Available online at: <http://databank.worldbank.org/data/reports.aspx?source=2&country=BGD&series=&period=> (Date of access: May, 2014).
- WRI (World Resources Institute), 2014. Global Forest Watch: Bangladesh Climate Data. Available online at: <http://climate.globalforestwatch.org/countries/BGD> (Date of access: May, 2014).
- Zanne, A.E., Lopez-Gonzalez, G., Coomes, D.A., Ilic, J., Jansen, S., Lewis, S.L., Miller, R.B., Swenson, N.G., Wiemann, M.C. and Chave, J. 2009. Global wood density database. Dryad.