

Atrial fibrillation in a WPW patient after the consumption of energy drinks: A case report.

Abstract:

This is a case of a young male who developed fast atrial fibrillation after he consumed three cans of Energy drinks (EDs). Treatment required electrical cardioversion and surprisingly, when he reverted to sinus rhythm, the ECG showed a type A Wolff Parkinson White syndrome (WPW) (left-sided accessory pathway), with no previous history.

Keywords: Energy drinks, atrial fibrillation, Wolff Parkinson White syndrome

Introduction:

Energy drinks (EDs) are widely distributed among youth worldwide. EDs are marketed as boosters of increased concentration and physical capacity. They are highly caffeinated drinks and contain sugar in combination with amino acids such as taurine and herbal supplements that heighten the effects of caffeine (1, 2). Energy drinks are the fastest-growing product in the beverage industry since bottled water, with a 240% increase in sales. (3, 4, 5)

Many reports of the adverse effects of ED intake have described a variety of symptoms and affected organ systems, including tachycardia, hypertension, confusion, agitation, seizures, liver damage, kidney failure, and cardiac dysfunction, with potentially deadly outcomes (6, 7).

A French official expert opinion statement published in 2013 concluded that a substantial proportion of the adverse effects were likely caused by EDs (8). The extent to which the negative consequences of ED usage are induced by caffeine, other ED elements, or a combination of the two is currently unknown; nevertheless, research suggests that the negative consequences of EDs may exceed the direct effects of caffeine alone. (9).

The most common adverse events of EDs affect the neurological and cardiovascular systems, according to a new comprehensive and systematic assessment of case studies related to EDs and their negative health repercussions. (4)

Goldfarb et al searched for case reports in peer-reviewed journals from January 1, 1980, to February 1, 2013, in which an acute CV event was temporally associated with ED consumption. They identified 17 cases of ED-related acute CV events (13 male cases; 15 cases aged <30 years, age range 13 to 58 years),; 10 of them had different cardiac arrhythmias; two had cardiac arrest; four cases had ST-segment elevations; and one had QT prolongation. (10)

Caffeine (1, 3, 7-trimethylxanthine) is a naturally found alkaloid. After ingestion, it is rapidly and completely absorbed from the gastrointestinal tract into the bloodstream and is readily distributed throughout the entire body. The most important mechanism of action of caffeine is the antagonism of adenosine receptors, which results in the release of norepinephrine, dopamine, and serotonin in the brain and an increase in circulating catecholamines. (11)

Case presentation:

In this case, we present a 23-year-old male who presented to the ER with palpitations and fatigue. He had no comorbidities before. However, he has a history of drinking 3 cans of energy drinks (250 ml for each) within three hours. After two hours of ED consumption, he began to have palpitations. On examination in the emergency room, he was fully conscious and orientated to time and place, his blood pressure (BP) was 100/65, and his pulse was 210 beats /min and irregular. Other systemic physical examinations were unremarkable. The patient was hooked up to a monitor, which revealed that his heart rate was irregular, averaging around 200 beats per minute. ECG showed fast AF with a heart rate of 190 b/m and a right bundle branch picture. (Fig 1)

In the emergency room, the patient received intravenous amiodarone 150 mg over 10 minutes. After receiving the amiodarone patient had dropping in blood pressure without changing the irregular fast heart rate. So we started the intravenous normal saline infusion and prepared for electrical cardioversion. The patient consented, was given anesthesia, and electrical cardioversion was performed without complication. Surprisingly, when he reverted to sinus rhythm, the ECG showed a type A WPW pattern (left-sided accessory pathway), which the patient did not know about before. (Fig 2) The patient was admitted to the hospital, and referred to an electrophysiologist (EPS) for further management.

Discussion:

Cardiac arrhythmias are reported as one of the common features of caffeine intoxication and EDS (12, 13), but in patients with Wolff–Parkinson–White syndrome, this is a serious condition. Wolff–Parkinson–White syndrome is antegrade conduction that occurs over an accessory pathway. Atrial fibrillation (AF)

is a common arrhythmia, but in the context of Wolff–Parkinson–White (WPW) syndrome, this is a medical emergency, as very rapid ventricular rates can develop due to bypass of normal rate-limiting effects of the atrioventricular (AV) node in the heart. This bypass may lead to ventricular fibrillation, which means cardiac arrest. (14, 15, 16, 17).

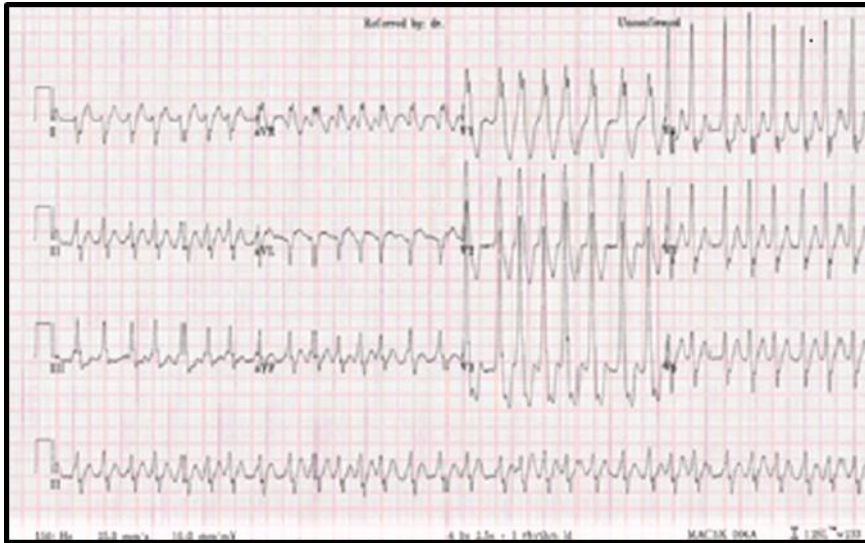
In the presenting scenario, we think that this patient has asymptomatic Wolff Parkinson White syndrome (WPW) which he did not know about it before and when he consumed high doses of EDs he developed fast atrial fibrillation. It is not known that Wolff Parkinson White syndrome can initiate atrial fibrillation but atrial fibrillation in WPW can lead to ventricular fibrillation and sudden cardiac death which did not occur in this case but it is a high risk to have it.

In the literature, a narrative review assessing the effect of energy drinking on electrophysiology and ischemic abnormalities from 2001 to 2019 was published in 2021. The review described 28 published case reports; arrhythmia was described in 20 cases and only one case of WPW. (18) This case of WPW was a 34-year-old male who presented to the EDs with tachycardia and chest pain after consumption of an energy drink. The authors of the case concluded that consumption of EDs caused unstable angina and anhidrotic tachycardia. (19)

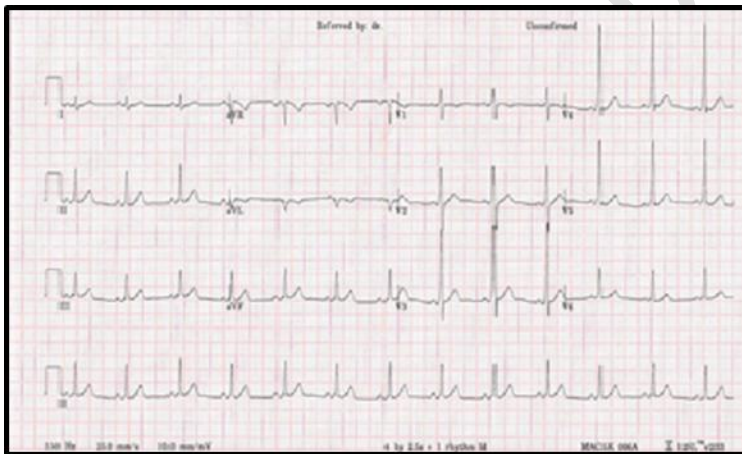
Earlier in 2014, another case was published in the BMJ case report, and it is very similar to our case. This case described a 17-year-old young male who developed wide complex tachycardia after EDs consumption, and after treatment, the ECG showed WPW (20). Up to the authors' knowledge, the current presenting case is a third published case describing the effect of ED in WPW patients.

Conclusion:

It has been proven that there is an association between the consumption of highly caffeinated drinks such as energy drinks and the development of cardiac arrhythmias, specifically atrial fibrillation. However, in Wolf Parkinsonian White syndrome patients, the condition is more serious.



(Fig 1) ECG: Fast AF with heart rate 190 b/m with right bundle branch picture.



(Fig 2) ECG: Type A WPW pattern (left-sided accessory pathway)

Ethical Approval:

As per international standard or university standard written ethical approval has been collected and preserved by the author(s).

Consent

As per international standard or university standard, patients' written consent has been collected and preserved by the author(s).

References:

- 1) Degirmenci, N., Fossum, I.N., Strand, T.A. et al. Consumption of energy drinks among adolescents in Norway: a cross-sectional study. BMC Public Health 18, 1391 (2018). <https://doi.org/10.1186/s12889-018-6236-5>
- 2) Khouja C, Kneale D, Brunton G, Raine G, Stansfield C, Sowden A, Sutcliffe K, Thomas J. Consumption and effects of caffeinated energy drinks in young people: an overview of systematic reviews and secondary analysis of UK data to inform policy. BMJ Open. 2022 Feb 7;12(2):e047746. doi: 10.1136/bmjopen-2020-047746. PMID: 35131813; PMCID: PMC8830236.
- 3) Heckman MA, Sherry K, de Mejia EG. Energy drinks: an assessment of their market size, consumer demographics, ingredient profile, functionality, and regulations in the United States. Compr Rev Food Sci Food Saf. 2010;9:303-317.
- 4) Ali F, Rehman H, Babayan Z, Stapleton D, Joshi DD. Energy drinks and their adverse health effects: a systematic review of the current evidence. Postgrad Med. 2015;127:308-322.
- 5) Reissig CJ, Strain EC, Griffiths RR. Caffeinated energy drinks—a growing problem. Drug Alcohol Depend. 2009;99:1-10.
- 6) Seifert SM, Schaechter JL, Hershorin ER, Lipshultz SE. Health effects of energy drinks on children, adolescents, and young adults. Pediatrics. 2011;127:511–28.
- 7) Wolk BJ, Ganetsky M, Babu KM. Toxicity of energy drinks. Curr Opin Pediatr. 2012;24:243–51
- 8) Opinion of the French Agency for Food, Environmental and Occupational Health and Safety on the assessment of risks concerning the consumption of so-called “energy drinks”. 2013: [108 pp.]. <https://www.anses.fr/sites/default/files/documents/NUT2012sa0212EN.pdf>. Accessed 4 Feb 2016.
- 9) Hammond D, Reid JL, Zukowski S. Adverse effects of caffeinated energy drinks among youth and young adults in Canada: a web-based survey. CMAJ Open. 2018; 6:E19–25.

- 10) Goldfarb M, Tellier C, Thanassoulis G. Review of published cases of adverse cardiovascular events after ingestion of energy drinks. *Am J Cardiol*. 2014 Jan 1; 113(1):168-72. doi: 10.1016/j.amjcard.2013.08.058. Epub 2013 Oct 4. PMID: 24176062.
- 11) Nawrot P, Jordan S, Eastwood J, Rotstein J, Hugenholtz A, Feeley M. Effects of caffeine on human health. *Food Addit Contam*. 2003;20:1-30.
- 12) Yamamoto T, Yoshizawa K, Kubo S, et al. Autopsy report for a caffeine intoxication case and review of the current literature. *J Toxicol Pathol*. 2015; 28:33-36.
- 13) Jennifer R Di Rocco; Adelaide During; Peter J Morelli; Marybeth Heyden; Thomas A Biancaniello: Atrial Fibrillation in Healthy Adolescents after Highly Caffeinated Beverage Consumption. Two Case Reports. *J Med Case Reports*. 2011;5
- 14) 17. Khan Fakhar Z, Dutka David Paul, Fynn Simon Patrick. Recorded spontaneous sudden cardiac arrest in a patient with pre-excited atrial fibrillation. *Europace*. 2009 Jan;11 (1)
- 15) Schwieler Jonas H, Zlochiver Sharon, Pandit Sandeep V, Berenfeld Omer, Jalife José, Bergfeldt Lennart. Reentry in an accessory atrioventricular pathway as a trigger for atrial fibrillation initiation in manifest Wolff Parkinson White syndrome: a matter of reflection? *Heart Rhythm*. 2008 Sep;5(9):1238–47
- 16) Barold S Serge. Malignant atrial fibrillation in the Wolff–Parkinson–White syndrome. *Cardiol J*. 2007;14 (1):95–6.
- 17) Thanavaro Joanne L, Thanavaro Samer. Clinical presentation and treatment of atrial fibrillation in Wolff–Parkinson–White syndrome. *Heart Lung*. 2010 Mar 9;39 (2):131–6.
- 18) Cao DX, Maiton K, Nasir JM, Estes NAM, Shah SA. Energy Drink-Associated Electrophysiological and Ischemic Abnormalities: A Narrative Review. *Front Cardiovasc Med*. 2021;8:679105. Published 2021 Jul 1. doi:10.3389/fcvm.2021.679105
- 19) Demir V, Celik Y, Hidayet S, Ede H, Turan Y. Coexistence of unstable angina pectoris and wolff-parkinson-white syndrome developed after consumption of energy drink. *J Ankara Univer Fac Med*. (2018) 71:184–7. 10.4274/atfm.00710
- 20) Candilio L, Chen A W Y, Iqbal R, Gandhi N. An interesting case of tachyarrhythmia. *BMJ Case Rep* 2014. doi:10.1136/bcr-2014-205481