

Original Research Article

ASSESSING THE EFFECT OF LANDUSE/LAND COVER (1986-2020) ON SOIL LOSS IN ALLUVIUM GEOLOGIC FORMATION USING GEOSPATIAL TECHNOLOGY IN SOUTHERN NIGERIA

Abstract

The occurrence of soil loss is a continuous process and occurs spatially across the earth's surface. The study of soil loss is a necessity for proper understanding of the processes and the rate of soil loss for conservational purpose. Landsat Thematic Mapper (TM)/Enhanced Thematic Mapper Plus (ETM⁺)/Operational Land Imager (OLI) image data was acquired for 1986, 2003 and 2020 were used to derive the *C* factor of the RUSLE model while other factors of the model were kept fixed for the years considering their inability to change easily. The RUSLE model was used to determine the trend of the soil loss on the alluvium geologic formation considering their land use/land cover changes for 1986, 2003 and 2020. The rainfall erosivity of the study area had an average of 8201.45MJmmha⁻¹h⁻¹yr⁻¹. The soil erodibility index of the soils obtained from Alluvium had an average of 0.150tons MJ⁻¹ hmm⁻¹. The slope length and steepness factor of the study area range from 0 to 2.574. the crop cover factor of for 1986 range from 0.52 to 0.87, 2003 range from 0.52 to 0.87 and 2020 range from 0.62 to 0.92. No active field conservation was found out within the study area as described by Wischmeier and Smith. The results obtained show that 1986, 2003 and 2020 had a soil loss of 1966.3, 2167.85 and 3361.14 tonha⁻¹yr⁻¹ respectively. The results show that the study area is experiencing an increased trend of soil loss. This result can serve as guide into understanding the past and current rate of soil loss for soil resource planning and management

Keyword: Alluvium Geologic Formation, Land use/land cover, Revised Universal Soil Loss Equation (RUSLE), Rainfall Erosivity, Soil Erodibility, Soil Erosion.

1.0 Introduction

Soil erosion is considered as a continuous process and occurs spatially on the earth's surface (Elsawwaf and Williems, 2012; Okorafor *et al.*, 2017). It is considered as a global threat to the environment due to its onsite and offsite Impact (Boardman and Poesen, 2006; Wang *et al.*, 2018). The use of Landsat imageries in determining the crop cover factor of the empirical model through the land use/land cover has enabled the estimation of soil for the past and present (Oguike and Onwuka, 2017; Karar *et al.*, 2020). This has become a necessity for the proper understanding of the soil loss pattern and adequate management planning.

Soil loss is known to be caused by several factors that works together simultaneously to cause soil loss such as; rainfall erosivity R , soil erodibility K , slope length and steepness LS , landcover C and land management P (Wischmeier and Smith, 1978; Aga *et al.*, 2018). For soil erosion to occur there be rainfall erosivity which is known as the ability of rainfall to cause soil loss and soil erodibility is the ability of the soil to resist the sudden impact of the erosive event to cause detachment of the soil particles (Almaaitah *et al.*, 2018). It is being been exacerbated by the slope length and steepness, landcover and land management practices (Wischmeier and Smith, 1978; Nearing *et al.*, 2017).

Several models have been adopted in soil loss study such as; the conceptual model such as Agricultural Non-Point Source Model (AGNPS) (Abdelwahab *et al.*, 2018) and Soil Water Assessment Tool (SWAT) (Dutta and Sen, 2018); empirical model includes Universal Soil Loss Equation (USLE) (Tsegaye *et al.*, 2015) and Revised Universal Soil Loss Equation (RUSLE) (Thomas *et al.*, 2018); physical based model which include Pan European Soil Risk Assessment (PESERA) (Li *et al.*, 2020) and Water Erosion Prediction Project (WEPP) (Meinen and Robinson, 2021). The USLE/RUSLE of the empirical model is the most used model worldwide in predicting soil loss and has been considered as a soil conservation and planning tool (Tsegaye *et al.*, 2015; Thomas *et al.*, 2018). The USLE/RUSLE model quantifies soil loss as a product of six factors working simultaneously to cause soil loss such as the R, K, LS, C, P (Reinard and Freimund, 1994; Wischmeier and Smith, 1978; Tsegaye *et al.*, 2015; Thomas *et al.*, 2018)

Several studies have been carried out on soil loss within the study area. Fashae *et al.*, (2013) carried out soil loss study on wasteland in Uyo. Udoumoh *et al.*, (2018) studied the impact of gully sites on the properties of the soil and its erodibility. Ogbonnaya and Johnbosco, (2018) studied the impact of geologic of geologic formation on soil erodibility in Anambra, Nigeria. Essien and Okon (2011) carried out a research using the number of rain days, rainfall amount, intensity and erosivity on soil loss and gully development in Uyo. Udoh and Akpan (2015) carried out a study on the characteristics and classification of soils as influenced by their parent materials. Akpan and Uwah (2018) studied the impact of land use systems and parent materials on soil quality indicators in soils of Akwa Ibom state. Uzoma and Onwuka (2018) carried out a field study in Ikpe Ikot Nkon of Akwa Ibom state on aggregate stability of different agricultural land use system.

The application of GIS and remote sensing in modelling soil loss has encouraged the rampant use of the empirical model in predicting soil loss based on their compatibility and ease of usage (Pancholi *et al.*, 2015; Abdelwahab *et al.*, 2018). The use of remote sensing data such as satellite imageries has enabled the retrieval of the landuse/landcover over the years and has enabled the estimation of the soil loss based on the land use pattern previously and currently for proper understanding of the soil loss based on the land use pattern within the study area.

The use of satellite thematic imageries has been found to be useful in estimating the crop cover factor in the USLE/RUSLE model. Therefore, the objective of this research is to determine the soil loss trend in Alluvium geologic formation for 1986, 2003 and 2020 using the satellite imageries of the respective years.

2.0 Materials and Method

2.1 Study Area:

The location of the study is Akwa Ibom state, Nigeria. The study area is located within the trigonometric boundaries of 4°32' and 5°33' north latitude and 7°25' and 8°25' east longitude. The climate is divided into the wet and dry season which last from April to October and November to March respectively. The annual total rainfall ranges from 1875mm to 2500mm with a mean annual temperature that varies between 21°C and 29°C and a relative humidity of 60% and 85% (Ogban and Obi, 2010).

2.1.1 Description of the Geologic Formation

The detailed geologic map of the study was obtained from the Cross River Basin Development Authority. The map was scanned, geo-referenced and digitized for the study as shown on Figure 1. Five geologic formations were identified within the study area. Alluvium formation – lithologies consists of sands, silts, clay, shale and gravels as described by (Obboh-Ikuenobe *et al.*, 2005; Akpan and Uwah, 2018).

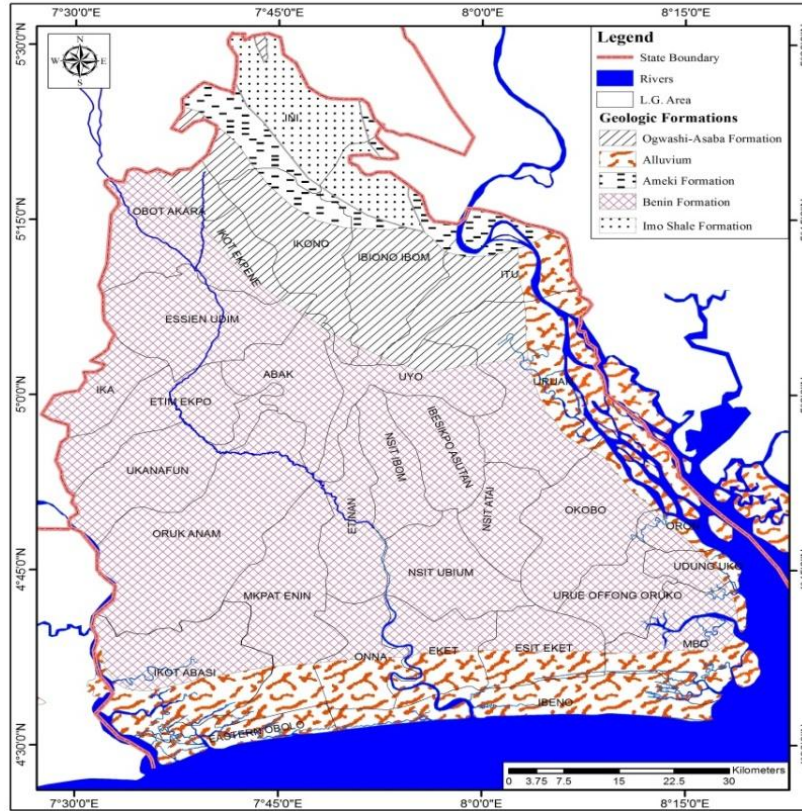


Figure 1: Map of Geologic Formation of Akwa Ibom

2.2 Methods:

2.2.1 Erosion Modeling

2.2.1.1 Revised Universal Soil Loss Equation Model

$$A = R \cdot K \cdot L \cdot S \cdot C \cdot P \quad (2.1)$$

Where:

A = is given as the estimated spatial and temporal average soil loss per unit area, which is given as tons/acre/year or tons/ha/year; R = rainfall-runoff erosivity factor ($\text{MJmmha}^{-1}\text{hr}^{-1}\text{yr}$); K = soil erodibility factor ($\text{tons MJ}^{-1} \text{hmm}^{-1}$); L = slope length factor; S = slope steepness factor; C = cover-management factor; P = support practice factor

2.3 RUSLE Model Parameter Estimation

2.3.1 Rainfall Erosivity (R)

In obtaining the rainfall erosivity index of the study area, a mean monthly rainfall data (rainfall amount) for 34 years (1985 - 2018) was obtained from Nigerian Metrological Agency (NIMET),

Oshodi; Lagos. Similarly, a mean monthly data was obtained from the Akwa Ibom International Airport for 9 years (2010 - 2018). The method used in this study is based on the average monthly and annual rainfall to measure rainfall aggressivity using the Modified Fournier Index and determine the rainfall erosivity index *R-values* as developed by Fournier (1960) and modified by Arnoldus, (1980). It is an alternative procedure to estimate *R* in data scarce region ((Renard and Freimund, 1994; Andoh *et al.*, 2012; Tahiri *et al.*, 2016; Coman *et al.*, 2019). The equation is given as;

$$R = 1.735 \times 10^{(1.5\log F - 0.08188)} \quad (2.2)$$

$$F = \sum_{i=1}^{12} \frac{P_i^2}{P} \quad (2.3)$$

R = Rainfall Erosivity (MJmmha⁻¹h⁻¹yr⁻¹); *F* = Modified Fournier Index; *P_i* = Monthly rainfall (mm); *P* = Total annual rainfall (mm)

2.3.2 Soil Erodibility (*K*) Factor

Soil Erodibility (*K*) factor is an important field parameter in assessing the risk of soil erosion based on the sand, silt, clay, organic matter, permeability and structural code of the soil (Wischmeier and Smith, 1978; Chadli, 2016). *K* factor investigates the susceptibility of a soil to loss based on the physico-chemical characteristics of the soil sampled obtained as measured under the standard unit plot criteria. The standard condition is the unit plot, which is given as 22.6m long with a 9% gradient, tilled up and down the hill slope with a continuous fallow system (Wischmeier and Smith, 1978; Chadli, 2016). The results of the analyzed soil samples in the study area were used for determining the *K* factor as giving by equation 2.4.

$$k = \frac{2.173 \times 10^{-4} (12 - OM) \times M^{1.14} + 3.25 (S - 2) + 2.5 (P - 3)}{100} \quad (2.4)$$

Where *OM* is the organic matter (%); *S* is soil structure class; *P* is permeability class; *M* is the aggregated variable derived from the soil textural classification; *M* = (%Msilt) × (%silt+%sand), and the modified silt (Msilt) is a percentage of grain size between 0.002 and 0.1 mm.

2.3.3 Topographic Factor (Slope length & steepness factor) *LS-factor*

The slope length and slope steepness expresses the ratio of soil loss as defined by Wischmeier and Smith (1978). Slope value was derived from Digital Elevation Model (DEM) of the study

area. The values of X and S were derived from DEM. To calculate the slope length (L) value, Flow Accumulation was derived from the DEM after conducting Fill and Flow Direction processes by using Arc Hydro tool.

$$LS = (X/22.1)^m (0.065 + 0.045 S + 0.0065 S^2) \quad (2.5)$$

Where;

$$LS = (\text{Flow accumulation} * \text{Cell value} / 22.1)^m (0.065 + 0.045 S + 0.0065 S^2) \quad (2.6)$$

L = slope length (m or km); S = slope gradient (%); the value of m varies from 0.2 – 0.5 depending of the slope (Wischmeier and Smith, 1978; Bannari *et al.*, 2016).

2.3.4 Crop management factor (C-factor)

The crop cover management factor which represents the C factor in the USLE/RUSLE is used to indicate the effect of cropping and management practices on soil loss rates (Pancholi *et al.*, 2015). It showcases the ratio of soil loss under a given crop cover condition to the soil at the base (Morgan, 1995). The C factor was generated using the Normalized Difference Vegetation Index (NDVI) obtained from land use/land cover satellite imageries of the study area (Rouse *et al.*, 1974; Barakat *et al.*, 2014; Abdo and Salloum, 2017).

2.3.4.1 Landsat Imageries Data

A 30 meters resolution dataset of remotely sensed satellite imagery of Landsat Thematic Mapper (TM)/Enhanced Thematic Mapper Plus (ETM⁺)/Operational Land Imager (OLI) image data was acquired for 1986, 2003 and 2020 respectively from the United State Geological Surveys (USGS) were used for the land use/land cover classification and change trend analysis.

2.3.4.2 Image Processing and Data Preparation

The processing of the landsat images for change detection was carried out using ERDAS IMAGINE software. Radiometric calibration and corrections were done during change detection in order to eliminate the image differences as a result of changing atmospheric conditions. Similar method has been carried out by (Eyoh and Uboh, 2015; Essien and Cyrus, 2019; Karar *et al.*, 2020).

2.3.4.3 Determination of the C Factor for the Study

The NDVI were calculated using equation (2.7), subsequently, the *C* factor were determined using equation (2.8).

$$\text{NDVI} = (\text{NIR} - \text{RED}) / (\text{NIR} + \text{RED}) \quad (2.7)$$

$$C = 1.02 - 1.21 \text{ NDVI} \quad (2.8)$$

2.3.5 Conservation Practice factor (*P* factor)

The conservation practice *P* factor is known as the ratio of soil loss associated with a support practice on croplands to the corresponding loss with up and down slope (Renard *et. al.*, 1997). The different types of agricultural land management practices includes; Strip cropping, Contour farming, and terracing etc. (Wischmeier and Smith, 1978). *P*-factor is ranging from 0 – 1, the value reaching to zero indicates well conservation measures while the value reaching to 1 indicates poor conservative measures. No active support practice was found within the study area during inspection.

3.0 Results and Discussion

3.1 Rainfall-Runoff Erosivity of the Study Area

The rainfall amount obtained from the study area depicts a rainfall zone as described by Ezemonye and Emeribe, (2012) and Isaiah *et al.*, (2020). Table 1 shows the mean value of the erosivity values obtained from NIMET and Airport metrological. The average rainfall erosivity was estimated from the two weather stations as $8201.45 \text{ MJmmha}^{-1} \text{ h}^{-1} \text{ yr}^{-1}$. This indicates rainfall that is capable of initiating soil loss with a strong erosivity rate (Carvalho, 2008).

Table 1: Mean Value of the Rainfall-Runoff Erosivity for the Study Area

Rainfall Station	latitude	longitude	Rainfall Energy (MJmmha⁻¹h⁻¹yr⁻¹)
Airport	4.87499	8.091821	8536.11
NIMET	5.001233	7.9194398	7866.78
Average			8201.45

3.2 Soil Erodibility of Alluvium Geologic Formation

The soil erodibility within the study area as indicated an average value of the erodibility indices of the soils formed from the alluvium geologic formation of the study area as shown on Table 2. The erodibility indices of the soils is given as 0.150 which falls into the group II of the Wischmeier and Smith, (1978) soil erodibility index classification and cited by Emeka-Chris, (2014) it shows that soils form from Alluvium geologic formation are sandy soils that are well grained, similar finding have been observed by Ogban, (2017).

Table 2 Soil Erodibility of Alluvium Geologic Formation

Soil Erodibility (tons MJ ⁻¹ hmm ⁻¹)	Alluvium
K Average	0.150

3.3 Slope Length and Steepness (*LS*) Factor of Alluvium Geological Formation

The slope length and steepness factor was obtained using the slope and flow accumulation of the DEM of the geologic formation. The *LS* factor of the Alluvium geologic formation ranges from 0 to 2.57424 as shown on Figure 2. The value of the *LS* factor indicates that the topography of the geologic formation is relatively plain with moderate slopes and gradients (Wischmeier and Smith, 1978; Fashae *et al.*, 2013).

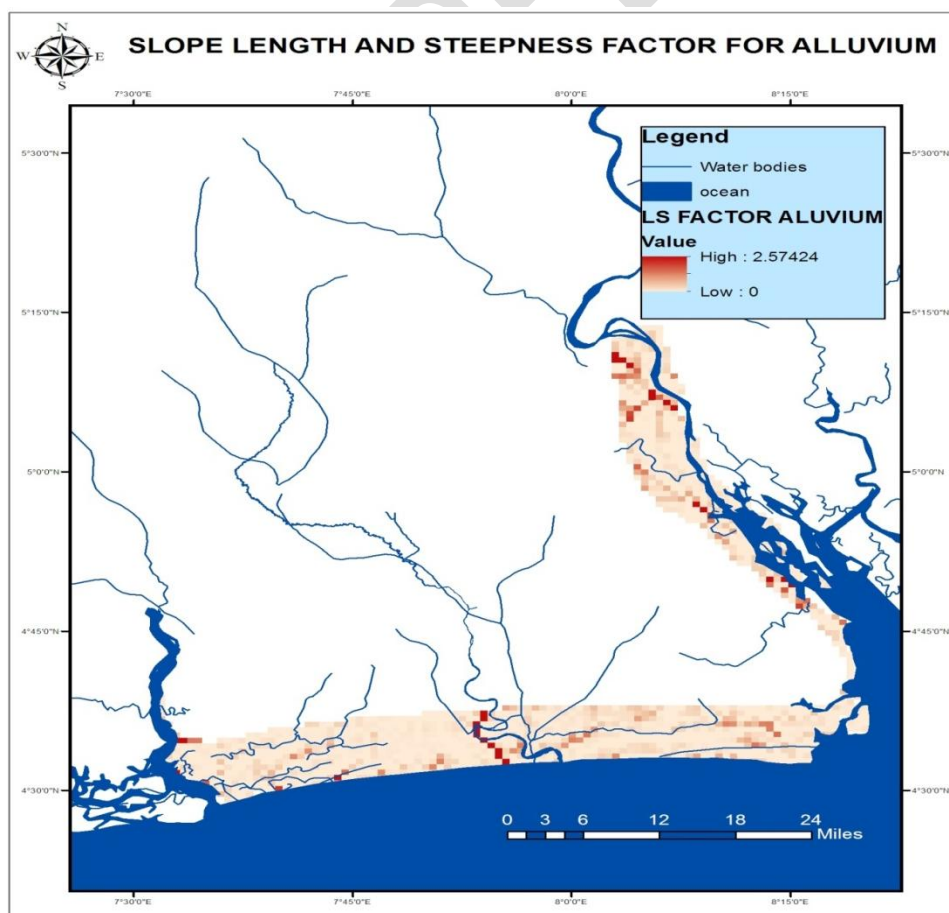


Figure 2: Map of Slope and Steepness Factor of Alluvium Geologic Formation

3.4 Land Use and Land Classification of Alluvium Geologic Formation

Table 3: LULC Spatial Extent in 1986, 2003 and 2020for Alluvium Geologic Formation

SN	Land Use Land Cover	1986 Area (Ha)	1986 Area %	2003 Area (Ha)	2003 Area %	2020 Area (Ha)	2020 Area %
1	Water Body	17816.33	12.34	21662.975	15.002	18079.9205	12.521
2	Swamp Forest	80480.77	55.74	62338.55	43.172	43270.1175	29.966
3	Primary Forest	10944.82	7.58	25396.85963	17.588	33190.8075	22.986
4	Secondary forest	12356. 52	8.56	17793.8985	12.323	22936.7925	15.885
5	Cultivated land	18182.12	12.60	10670.68	7.390	14434.9425	9.997
6	Builtup/Bare land	4616.257	3.20	6532.75	4.524	12484.0525	8.646
	TOTAL	144396.633	100	144396.633	100	144396.633	100

Table 2 shows the area occupied by the different land use and land cover identified in Alluvium geological formation for the period covered (1986 to 2020). The total area of land occupied by Alluvium geological formation is given as 144396.63ha. The landuse/land cover changes can be seen as a function of the population growth, urbanization and increase in agricultural activities within the study area. The data shows that more lands are exposed to the vagaries of erosion. Ekpenyong (2013) confirmed that the land use changes across the years and subjects most lands to soil loss degradation. Figure 3 shows the classified landsat imageries of Alluvium geologic formation for 1986, 2003 and 2020.

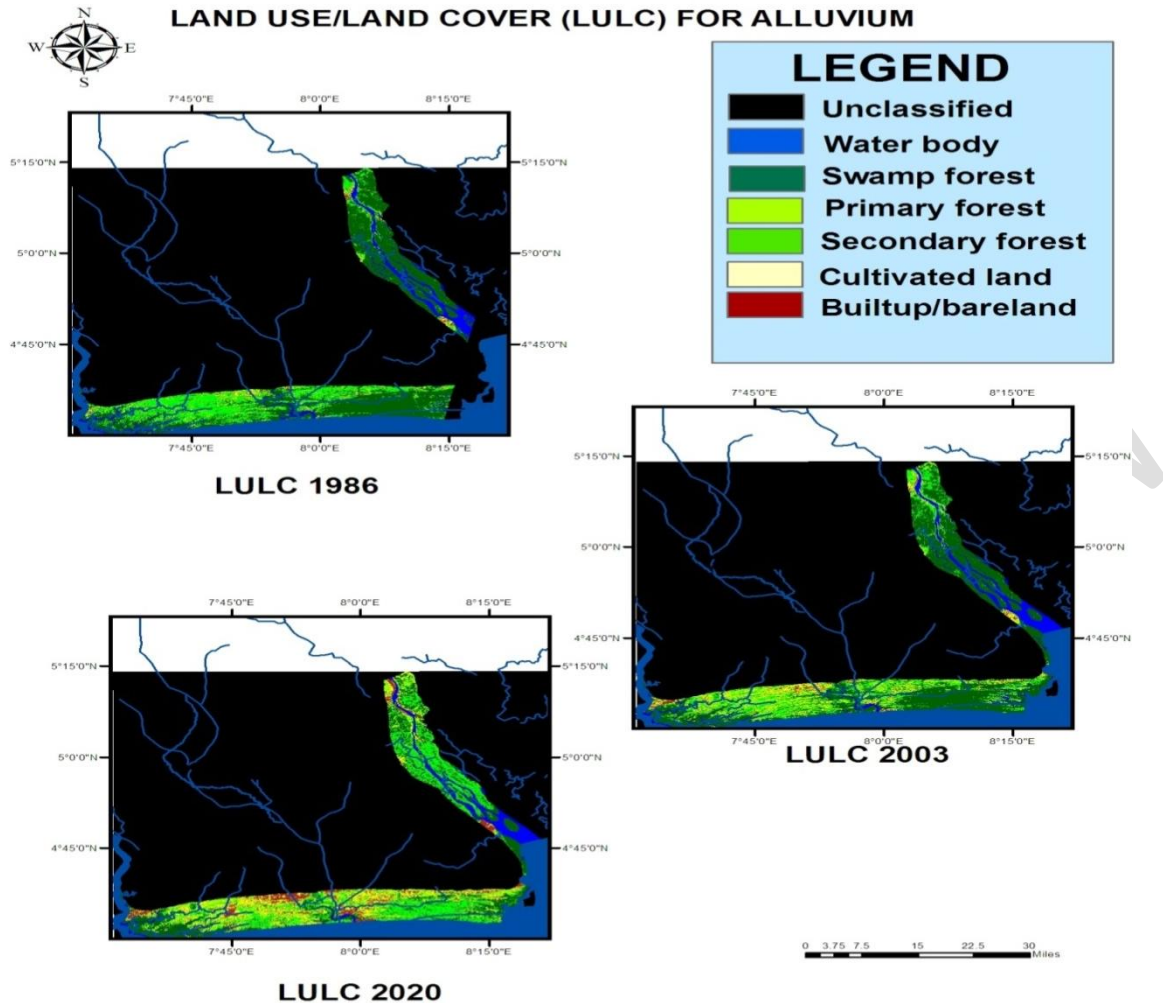


Figure 3: 1986, 2003 and 2020 Classified Landsat Image of Alluvium geologic formation of Akwa Ibom state

3.4.1 Crop Management Factor for Alluvium Geologic Formation

The crop management *C factor* for Alluvium geologic formation using the NDVI show that the *C factor* values for 1986 range from 0.65 to 0.90, 2003 range from 0.52 to 0.87 while 2020 range from 0.62 to 0.92. Figure 4 shows the spatiotemporal variation of the crop cover management *C factor* within Alluvium geologic formation (Ekpenyong, 2013; Ufot *et al.*, 2016).

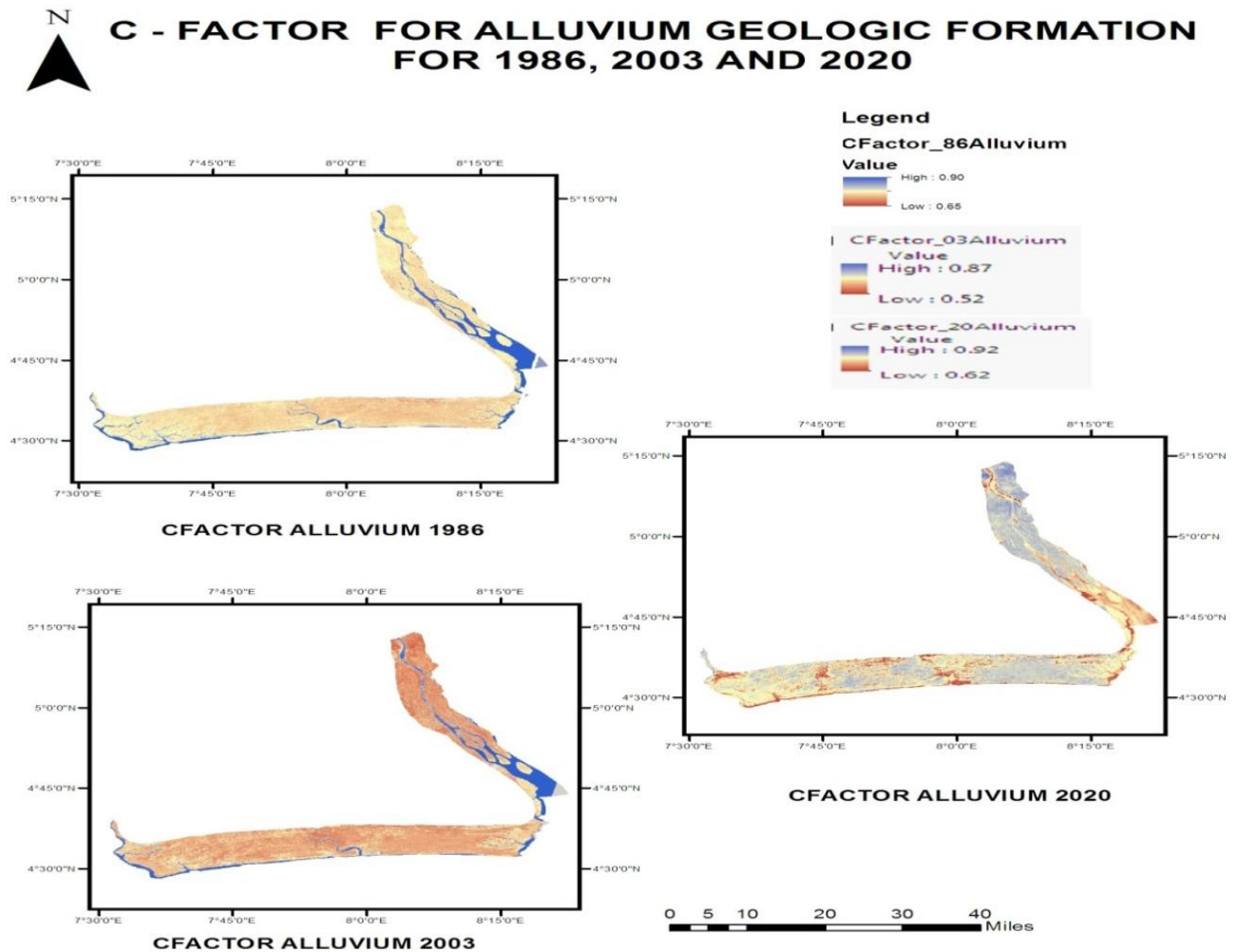


Figure 4: Cover Management Factor for Alluvium Geologic Formation for 1986, 2003, 2020.

3.5 Soil Loss Spatial Pattern for Alluvium Geologic Formation for 1986, 2003 and 2020.

Soil loss spatial pattern of Alluvium geologic formation showcases the past and present soil loss rate within the geologic formation. The years considered were 1986, 2003 and 2020. The results obtained shows that the Alluvium geologic formation had experienced a progressive soil loss across the years. In 1986, the geologic formation had an average annual soil loss ranging from 0 to $1966.3 \text{ t h}^{-1} \text{ y}^{-1}$. In 2003, the geologic formation had an annual average soil loss of $2167.85 \text{ t h}^{-1} \text{ y}^{-1}$ while 2020 experienced an average soil loss of $3361.14 \text{ t h}^{-1} \text{ y}^{-1}$ annually. The result obtained shows that the geologic formation is experiencing a continuous soil loss (Elsawwaf and Williems, 2012; Okorafor *et al.*, 2017). The high rainfall energy found within the study area has an influence on the rate of soil loss within the geologic formation. The erodibility index of the type of soils formed from alluvium geologic formation shows soils that are easily eroded which also contributes to the rate of soil loss within the study area (Udoh and Akpan, 2015; Akpan and

Uwah, 2018). the topography indicates minimal effect on soil loss. From the results obtained from the satellite imageries, it shows that the application of remote sensing is useful in predicting soil loss. The changes on the land cover indicate the impact of population growth, urbanization and increased agricultural has led to an increased soil loss. Figure 5 shows the soil loss of Alluvium geologic formation for 1986, 2003 and 2020.

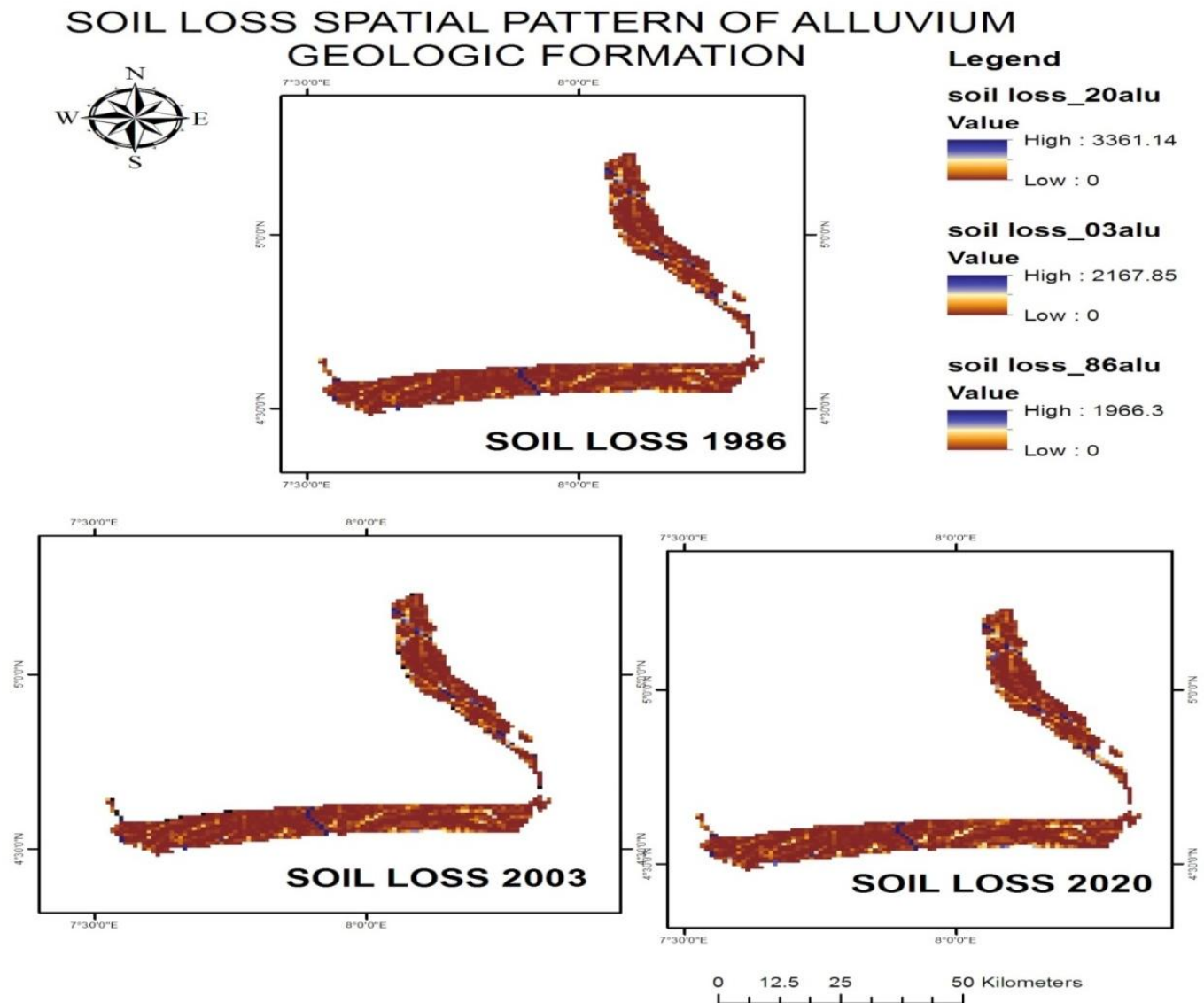


Figure 5: Spatial Pattern of Soil Loss in Alluvium Geologic Formation for 1986, 2003 and 2020.

4.0 Conclusion

Soil loss study has become a necessity in order to understand the rate of soil loss for soil conservational planning. This study focused on the use of remote sensing imageries of the land use/land cover of the study area to understand the past and present land use/land cover pattern for 1986, 2003 and 2020 for soil loss study. The land use/land covers were used to determine the *C* factor of the RUSLE model using the NDVI while other parameters of the model were assumed to be constant for the years since they seldom change. The results obtained show the rate of soil loss experienced by the geologic formation across the years. This research proves the importance of the application of geographical information system and remote sensing on soil loss study. The study shows that Alluvium geologic formation is experiencing an increased rate of soil loss across the years as a result of the land use/land cover changes associated within the geologic formation. This study can serve as a guide in soil resource conservation and management.

DISCLAIMER:

Authors have declared that no competing interests exist. The products used for this research are commonly and predominantly use products in our area of research and country. There is absolutely no conflict of interest between the authors and producers of the products because we do not intend to use these products as an avenue for any litigation but for the advancement of knowledge. Also, the research was not funded by the producing company rather it was funded by personal efforts of the authors.

References

- Abdelwahab, O. M. M., Ricci, G. F., De Girolamo, A. M., and Gentile, F. (2018). Modelling soil erosion in a Mediterranean watershed: Comparison between SWAT and AnnAGNPS models, *Environmental Research*, Volume 166, Pages 363-376, ISSN 0013-9351, <https://doi.org/10.1016/j.envres.2018.06.029>.
- Abdo, H. and Salloum, J. (2017). Spatial Assessment of Soil Erosion in Algeraha Basin (Syria). *Model Earth Syst Environ*. 3:26.
- Aga, A. O., Chane, B. and Melesse, A. M. (2018). Soil Erosion Modelling and Risk Assessment in Data Scarce Rift Valley Lake Regions, Ethiopia. *Water*, 10, 1684; doi:10.3390/w10111684
- Akpan, U. S. and Uwah, I. D. (2018). Impact of Land Use Systems and Parent Materials on Soil Quality Indicators in Soils of Akwa Ibom State, Nigeria. *Agricultural Extension Journal* 2018; 2(1):44-50 ISSN 2521 – 0408
- Almaaitah, R. A., Azhari, A. W., Ab Rahim, M. A. and Ridwan, F. M. (2018). Spatial Distribution of Soil Erosion Risk using RUSLE, RS and GIS Techniques. *International*

- Andoh, H. F., Antwi, B. O., Wakatsuiki, T. and Atakora, E. T. (2012) Estimation of soil erodibility and rainfall erosivity patterns in the agroecological zones of Ghana. *Journal of Soil Science and Environmental Management* Vol. 3(11), pp. 275-279,
- Arnoldus, H.M.J., (1980). An approximation of the rainfall factor in the Universal Soil Loss Equation. In: De Boodt M, and Gabriels D, editors. *Assessment of Erosion*, John Wiley & Sons, Chichester. p. 127–132
- Bannari, A., Kadhem, G., El-Battay, A., Hameid, N. A. and Rouai, M. (2016). Assessment of Land Erosion and Sediment Accumulation Caused by Runoff after a Flash-Flooding Storm Using Topographic Profiles and Spectral Indices. *Advances in Remote Sensing*, 5, 315-354.<http://dx.doi.org/10.4236/ars.2016.54024>
- Barakat, M., Mahfoud, I. and Kwyas, A. (2014). Estimation of Vegetation Factor (C) Using Normalized Difference Vegetation Index (NDVI) in Lower and Middle Basin of Al-Kabeer River in Lattakia/Syria. *Tishreen University J Res Sci Stud*. 36:99-107
- Boardman, J. and Poesen, J. (2006). *Soil Erosion in Europe*. John Wiley & Sons Ltd, ISBN: 978 0-470-85910-0, pp. 855.
- Carvalho, N. O. (2008). *Hidrossedimentologia Prática*, 2^a ed. Interciência, Rio da Janeiro, Brazil. 599 pp
- Chadli, K. (2016). Estimation of soil loss using RUSLE model for Sebou watershed (Morocco). *Model Earth Syst Environ*. 2:1-10.
- Coman, A. M., Lacatusu, G., Macsim, A. M. and Lazar, G. (2019) Assessment of Soil Erosion Using Fournier Indexes to Estimate Rainfall Erosivity. *Environmental Engineering and Management Journal* 18, 8, 1739-1745
- Cross River Basin Development Authority (2020). *Geologic Map of Akwa Ibom State*
- Dutta, S. and Sen, D. (2018). Application of SWAT model for predicting soil erosion and sediment yield. *Sustain. Water Resour. Manag.* **4**, 447–468
<https://doi.org/10.1007/s40899-017-0127-2>
- Ekpenyong, R. E. (2013). An Assessment of Land Cover Change and Erosion Risk in Akwa Ibom State of Nigeria Using the Co-ordination Information on the Environment (CORINE) Methodology. *Greener Journal of Physical Sciences*. vol. 3(3). pp 076 – 089.
- Elsawwaf, M. and Willems, P. (2012). Analysis of the climate variability on Lake Nasser evaporation based on the Bowen ratio energy budget method. *J. Environ. Biol.* 33, 475–485.
- Emeka-Chris, C. C. (2014). Determination of Erodibility Index (K) Of Soil in Michael Okpara University of Agriculture, Umudike. *The International Journal Of Engineering And Science (IJES)*. Volume 3, Issue 12, Pp 30-38. ISSN (e): 2319 – 1813 ISSN (p): 2319 – 1805

- Essien, E. and Cyrus, S. (2019). Detection of Urban Development in Uyo (Nigeria) Using Remote Sensing. *Land* , 8, 102. <https://doi.org/10.3390/land806010>
- Essien, O. E. and Okon, E. G. (2011). Rainfall characteristics, runoff rate and traffic flow on gully morphometric parameter growth and soil loss in sand-mined peri-urban, Uyo, Nigeria. *Journal of Geology and Mining Research* Vol. 3(7), pp. 180-187.
- Eyoh, A. and Ubom, O. (2015). Spatio-Temporal Analysis of Land Use/Land Cover Change Trend of Akwa Ibom State, Nigeria from 1986-2016 Using Remote Sensing and GIS *International Journal of Science and Research (IJSR)* Volume 5 Issue 10, October 2016, pp 1805-1810
- Ezemonye, M. N. and Emeribe, C. N. (2012). Rainfall Erosivity in Southeastern Nigeria. *Ethiopian Journal of Environmental Studies and Management EJESM* Vol. 5 No. 2 DOI:<http://dx.doi.org/10.4314/ejesm.v5i2.1>
- Fashae, O. A., Okon, U. and Olusola, A. (2013). Estimating Soil Loss from Soil Erosion-Induced Land Degradation in Uyo Metropolis, Nigeria Using Remote Sensing Techniques and GIS. *Ife Research Publications in Geography* 12 (2013) 120 –137.
- Isaiah, A. I., Yamusa, A. M. and Odunze, A. C. (2020). Impact of Climate Change on Rainfall Distribution on Cassava Yield in Coastal and Upland Areas of Akwa Ibom State, Nigeria. *Journal of Experimental Agriculture International*, 42(5), 44-53. <https://doi.org/10.9734/jeai/2020/v42i530517>
- Karar, H. F., Hussein, S. and Hayder, D. (2020). Spatial-Temporal Analysis of Land Use and Land Cover Change Detection Using Remote Sensing and GIS Techniques. *IOP Conf. Ser.: Mater. Sci. Eng.* **671** 012046
- Li, P., Zang, Y., Ma, D., Yao, W., Holden, J., Irvine, B., and Zhao, G. (2020). Soil erosion rates assessed by RUSLE and PESERA for a Chinese Loess Plateau catchment under land-cover changes. *Earth Surf. Process. Landforms*, 45: 707–722. <https://doi.org/10.1002/esp.4767>
- Meinen, B. U. and Robinson, D. T. (2021). Agricultural Erosion Modelling: Evaluating USLE and WEPP field-scale erosion estimates using UAV time-series data, *Environmental Modelling & Software*, Volume 137, 104962, ISSN 1364-8152, <https://doi.org/10.1016/j.envsoft.2021.104962>.
- Morgan, R. P. C. (1995). *Soil Erosion and Conservation*. 2nd edition. United Kingdom: Longmann Group Limited.
- Nearing, M. A., Xie, Y., Liu, B. and Ye, Y. (2017). Natural and anthropogenic rates of soil erosion, *International Soil and Water Conservation Research*, Volume 5, Issue 2, Pages 77-84,
- Oboh-Ikuenobe F.E., Obi, C. G. and Jaramillo, C. A. (2005) Lithofacies, palynofacies, and sequence stratigraphy of Palaeogene strata in Southeastern Nigeria. *J Afr Earth Sc* 41:79–101.

- Ogban, P. I. (2017). Structural Stability and Erodibility In Soils Formed on Different Parent Materials In Southern Nigeria. *Nigerian Journal of Agriculture, Food and Environment*. 13(4):63-74
- Ogbonnaya, I. and Johnbosco, C. E. (2018). The Characteristics and the Erodibility Potentials of Soils from Different Geologic Formations in Anambra State, Southeastern Nigeria *Journal Geological Society of India*, Vol.92, pp.471-478.
- Oguike, P. C. and Utin, U. E. (2017). comparative assessment of some physical properties and organic matter content of soils derived from different parent materials in akwa ibom state, Nigeria. *J. Agric. Sci. & Env.* 18(1&2):107-125.
- Okorafor, O. O., Akinbile, C. O. and Adeyemo, A. J. (2017). Soil Erosion in South Eastern Nigeria: A Review. *Scientific Research Journal (SCIRJ)*, Volume V, Issue IX, ISSN 2201-2796
- Pancholi, V. H., Lodha, P. P. and Prakash, I. (2015). Estimation of Runoff and Soil Erosion for Vishwamitri River Watershed, Western India Using RS and GIS. *American Journal of Water Science and Engineering*. Vol.1, No. 2. pp. 7-14. doi: 10.11648/j.ajwse.20150102.1
- Renard, K. G., Foster, G. R., Weesies, G. A., McCool, D. and Yoder, D. (1997). *Predicting Soil Erosion by Water: A Guide to Conservation Planning with the Revised Universal Soil Loss Equation (RUSLE)*. Agriculture Handbook (Washington) (703).
- Renard, K.G., and Freimund, J. R. (1994). Using Monthly Precipitation to Estimate R-Factor in the Revised USLE. *Journal of Hydrology*, 127:287-306
- Rouse J. Jr., Haas, R., Schell J., et al. (1974). Monitoring Vegetation systems in the Great Plains WITH erts. NASA Special Publications. 351:309.
- Tahiri, M., Tabyaoui, H., Tahiri, A., El Hadi, H., El Hammichi, F. and Achab, M. (2016). Modelling Soil Erosion and Sedimentation in the Oued Haricha Sub-Basin (Tahaddart Watershed, Western Rif, Morocco): Risk Assessment. *Journal of Geoscience and Environment Protection*, 4, 107-119. <http://dx.doi.org/10.4236/gep.2016.41013>
- Thomas, J., Joseph. S. and Thrivikramji, K. P., (2017). Assessment of soil erosion in a tropical mountain river basin of the southern Western Ghats, India using RUSLE and GIS. *Geosci Front.*, 9(3), 893906. DOI: <https://doi.org/10.1016/j.gsf.2017.05.011>
- Tsegaye, K., Addis, H. K. and Hassen, E. E. (2019). "Soil Erosion Impact Assessment using USLE/GIS Approaches to Identify High Erosion Risk Areas in the Lowland Agricultural Watershed of Blue Nile Basin, Ethiopia", *Int. Ann. Sci.*, vol. 8, no. 1, pp. 120–129.
- Udoh, B. T. and Akpan, U. S. (2015). Characteristics and Classification of Soils as Influenced by Parent Materials in South-Eastern Nigeria. *Nigerian Journal of Agriculture, Food and Environment*. VOL. 11(3):102-108.
- Udumoh, U., Manuel, F., Ehiomogue, P., Ekpo, A. and Unyime, A. (2018). Estimating Factors in Soils of Uyo, South-South, Nigeria. *Int.J.Curr.Res. Aca.Rev.* 6(11), 23-38 [doi://doi.org/10.20546/ijcrar.2018.611.004](https://doi.org/10.20546/ijcrar.2018.611.004)

- Ufot, U. O., Iren, O. B. and Chikere, N. C. U. (2016). Effects of Land Use on Soil Physical and Chemical Properties in Akokwa Area of Imo State, Nigeria. *Int. J. Life. Sci. Scienti. Res.*, 2(3): -273-278.
- Uzoma, K. C. and Onwuka, B. M. (2018). Variations in Aggregate Stability and selected Soil Chemical Properties Under Different Land Use Systems in Ikpe Ikot Nkon, Southeastern, Nigeria. *Agri Res & Tech :Open Access J*; 17(5): 556036. DOI: 10.19080/ARTOAJ.2018.17.556036.
- Wang, L., Qian, J., Qi, W. Y., Li, S. S. and Chen, J. L. (2018). Changes in soil erosion and sediment transport based on the RUSLE model in Zhifanggou watershed, China. *Proceedings International Association of Hydrological Sciences* 377, 9–18. <https://doi.org/10.5194/piahs-377-9-2018>
- Wischmeier, W. H. and Smith, D. D. (1978). Predicting rainfall erosion losses – A guide to conservation planning. *Agriculture handbook no. 537*. Washington, D. C., USA:Department of Agriculture.