

A Meta-Analysis of the Effect of Selective Serotonin Reuptake Inhibitors on Pain in Fibromyalgia

Abstract: (1) Background: Fibromyalgia is a clinical condition that causes ~~widespread~~wide spread severe pain, sleep problems, fatigue, and often emotional and mental distress. Patients with fibromyalgia may be more sensitive to pain than others. (2) Aim: ~~The aim of this~~This study ~~is aims~~ to screen and evaluate the efficacy and safety of selective serotonin reuptake inhibitors (SSRIs) in the management of pain in patients with fibromyalgia. (3) Methods: This systematic review and meta-analysis gathered all studies related to selective serotonin inhibitors in the treatment of pain in fibromyalgia, using the databases of PubMed, the Cochrane Library, and Google Scholar. All articles using a visual ~~analogue~~analog scale (VAS) were included in the review. All duplicates and non-eligible or unavailable full-text studies were excluded. The primary outcome was defined as pain reduction by VAS score. Secondary outcomes were the assessment of the occurrence of adverse effects at any time in the study or premature withdrawal. (4) Results: The five studies included in the meta-analysis for pain management have moderate heterogeneity. This is shown by the test of heterogeneity with a p-value greater than 0.05 and an I² value less than 50%. If the I² value is more than 50% and the p-value is significant, this results in differing study results. The result of this meta-analysis shows that the SSRI group had a statistically significant reduction in pain ($Z = 2.37$, $p = 0.02$). (5) Conclusion Based on the results of the meta-analysis, SSRIs may be considered for pain management for a short-term duration, preferably in female patients aged over 45 years old, in the absence of other health problems except for fibromyalgia. However, close monitoring of the potential withdrawal effects is necessary.

Keywords: Serotonin reuptake inhibitors – SSRI – fluoxetine – paroxetine – citalopram – pain Fibromyalgia

1. Introduction

The introduction should briefly place the study in a broad context and highlight why it is important. It should define the purpose of the work and its significance. The current state of the research field should be carefully reviewed and key publications cited. Please highlight controversial and diverging hypotheses when necessary. Finally, briefly mention the main aim of the work and highlight the principal conclusions. As far as possible, please keep the introduction comprehensible to scientists outside your particular field of research. References should be numbered in order of appearance and indicated by a numeral or numerals in square brackets—e.g., [1] or [2,3], or [4–6]. See the end of the document for further details on references.

Fibromyalgia is a prevalent medical condition ~~characterised~~characterized by widespread chronic pain, sleep disorders, fatigue, and cognitive difficulties (1). The prevalence of fibromyalgia ranges between 2% and 4% in the general population and occurs in human populations all over the world (1). There are controversies concerning its definition, pathogenesis, and treatment, and some scholars have even contested the existence of this disorder (1). In 1990, the American College of Rheumatology (ACR) defined classification criteria for fibromyalgia that included multiple areas of tenderness occurring in muscles and ~~muscle tendon~~muscle-tendon junctions along with widespread chronic pain (1). The classification criteria were updated in 2010, where the ACR excluded tender points and allowed less extensive pain in the criteria, and the diagnosis was based on patient-reported somatic symptoms, as well as cognitive difficulties (1).

The pathogenesis of fibromyalgia remains unclear; however, a model has been suggested in which the psychological and biological variables of the syndrome interact, which consequently influences factors such as predisposition, trigger, and the aggravation of the chronic disease (1). Therefore, diagnosis requires a history of a cluster of symptoms occurring simultaneously as an exclusion of a somatic disease which can otherwise explain the symptoms by a medical examination (1). Current evidence-based guidelines emphasize the value of the suggested multimodal treatments, which consist of both nonpharmacological and selected pharmacological treatments designed to treat individual symptoms such as pain, insomnia, fatigue, and mood changes (1). As treatment of fibromyalgia is based on its associated symptoms only, treatment is primarily focused on managing the disorder through pain and other associated symptoms, namely pain management (2). Serotonin reuptake inhibitors (SSRI) are often prescribed to manage pain in fibromyalgia; however, data on the screening and assessment of their effects are still sporadic (2).

Pharmacological Treatments

The 1st new-generation anti-depressant class, which are selective serotonin reuptake inhibitors (SSRI), are reported to have beneficial effects in the management of fibromyalgia symptoms based on pain and brain neuroimaging analysis (3, 4). The family of

selective serotonin reuptake inhibitors ~~vary~~^{varies} greatly in their chemical structure; however, they all work through the inhibition of the neuronal serotonin reuptake mechanism, therefore, providing pain relief (3, 4). All SSRIs also exhibit similar side effects, which are generally associated with their mechanism of action (3). These may include impaired cognition, sexual dysfunction, anxiety, and gastrointestinal disturbances (3), with serotonin syndrome being the most feared complication. Side effects of SSRIs can be of a mild type (~~characterised~~^{characterized} by over-responsive reflexes, sweating, and increased heart rate), moderate type (~~characterised~~^{characterized} by agitation, hyperthermia, and hypertension), or severe type (~~characterised~~^{characterized} by disseminated intravascular, seizures, rhabdomyolysis, arrhythmia, and hypertension) (3). Drugs that belong to the selective serotonin reuptake inhibitor class include fluoxetine, citalopram, paroxetine, sertraline, and fluvoxamine, as well as vilazodone (3). SSRIs can exhibit adverse effects depending on the specific type of drug prescribed and the dosage. It is, therefore, essential that each patient receives a tailored personal treatment plan at an individual level based on their subjective responses (3). There are several examples of variable effects, which include the most common paroxetine and citalopram. Paroxetine is associated with a high incidence of withdrawal because of its high selectivity and ability to inhibit noradrenaline reuptake (5, 6). However, paroxetine has a weak affinity to cholinergic receptors and low uptake of norepinephrine, making it relatively safer for elderly patients, especially when related to adverse cardiovascular effects (3, 7). Citalopram, meanwhile, is known as a very selective inhibitor but lacks activation of sedation properties (3, 8). The bioavailability of citalopram is high due to strong lipophilicity (8). It binds to the human plasma membrane with 80% efficacy, allowing it to be absorbed by the gastrointestinal system, with a prolonged effect, and reaching a peak at about 4 hours (8). When comparing SSRIs against the traditional antidepressants, such as monoamine oxidase inhibitors (MAOIs) and tricyclic antidepressants (TCAs), SSRIs have been proven to have higher profiles of efficacy, safety, and tolerance (3, 9). They also report much lower chances of severe adverse events such as cardiovascular side effects (3, 9). A review of studies that reported the effects of the SSRI fluoxetine against a placebo group found that fluoxetine resulted in significant improvement in the control of fibromyalgia-related symptoms of pain and fatigue using a fibromyalgia-related impact questionnaire scoring system (10). Fibromyalgia syndrome (FMS) is now defined as a multisystem disease including allodynia, mechanical pain, hyperalgesia, and hypersensitivity to pain (9). It is distinguished from other types of musculoskeletal pain due to the presence of functional dysautonomia (11). A double-blinded placebo-controlled clinical trial, excluding patients with concurrent mood and anxiety disorders, showed a 10 statistically significant ~~effect~~^{effects} of paroxetine which was well-tolerated and improved symptoms of fibromyalgia (12). The study employed the Fibromyalgia Impact Questionnaire (FIQ) as an assessment tool which showed more than a 50% reduction ~~of~~ⁱⁿ pain and an improved quality of life when compared to the placebo group ($p=0.08$) (12). Contrary to the belief that SSRIs help with pain, a study of several patients with fibromyalgia who were given 20 mg/day of fluoxetine vs a placebo group showed that the effect of increased wellbeing was only due to a decrease in depression over 3–6 weeks, even though the subjects were not diagnosed previously with depression (13). However, a study showed higher ~~titers~~^{titres} of antibodies against serotonin gangliosides in patients with FMS (14). This may explain why a patient with FMS experiences improvement in symptoms after being treated with SSRIs (14). Additionally, a Cochrane study analyzing several studies regarding the efficacy of SSRIs revealed low-quality evidence in pain reduction when compared to placebo groups (2). Therefore, no SSRI has been approved to treat fibromyalgia by any drug agency (2). Studies on this subject are complex since reporting is subjective, and the nature of the disease is chronic (2). Despite low clinical evidence, most clinical practices recommend using SSRIs, either ~~with~~^{with} sole use of fluoxetine or in combination with a tricyclic anti-depressant, such as recommended by the American Society of Pain (2).

2. Aims and Objectives

This study aims to determine the efficacy and safety of SSRIs in the pain management of patients with fibromyalgia via the design of a systematic review and meta-analysis of double-blinded, randomized controlled clinical trials. The two objectives are:

1. to quantify the analgesic effect of SSRIs (i.e., citalopram, fluoxetine, and paroxetine) in fibromyalgia, and
2. to assess the frequency of the occurrence of adverse events upon the prescription of an SSRI.

3. Materials and Methods

The Materials and Methods should be described with sufficient ~~details~~^{detail} to allow others to replicate and build on the published results. Please note that the publication of your manuscript implicates that you must make all materials, data, computer code, and protocols associated with the publication available to readers. Please disclose at the submission stage any restrictions on the availability of materials or information. New methods and protocols should be described in detail while well-established methods can be briefly described and appropriately cited.

Research manuscripts reporting large datasets that are deposited in a publicly available database should specify where the data have been deposited and provide the relevant accession numbers. If the accession numbers have not yet been obtained at the time of submission, please state that they will be provided during review. They must be provided ~~prior to~~^{before} publication.

~~Interventionary~~^{Interventional} studies involving animals or humans, and other studies that require ethical approval, must list the authority that provided approval and the corresponding ethical approval code.

Search Strategy

This systematic review employs a meta-analysis upon gathering all relevant studies related to selective serotonin inhibitors in the treatment of pain in fibromyalgia. The titles and abstracts which were generated by the search strategy were reviewed in terms of quality and relevance. From this review, papers were refined and selected for inclusion in the meta-analysis. The keywords used to gather the reviews are serotonin reuptake inhibitors – SSRI – fluoxetine – paroxetine – citalopram – pain – fibromyalgia (see Fig-

ure1) using the databases PubMed, Cochrane Library, and Google Scholar. This research will include all published articles written in the English language, and all other languages will not be considered.

Eligibility and Exclusion

Selected studies in this paper are double-blind placebo-~~randomised~~randomized control trials composed of adult patients between the ages of eighteen and seventy years old diagnosed with fibromyalgia. The intervention of choice was selective serotonin reuptake inhibitors, mainly citalopram, fluoxetine, and paroxetine. Only trials greater than six weeks long will be included, and patients should have no medical history of any other chronic disease and should not be using any medications or anti-depressants except for paracetamol (acetaminophen) which was permitted. If the study did not meet the eligibility criteria or the full text could not be obtained, this also merited removal from analysis(Figure 1).

Selection of Studies

All articles related to the ~~utilisation~~utilization of selective serotonin reuptake inhibitors, mainly citalopram, fluoxetine, and paroxetine, for the assessment of pain improvement in fibromyalgia using a Visual Analogue Scale (VAS) for pain will be identified through database searching and followed by the removal of duplicates and exclusion of ~~noneligible~~non-eligible and unavailable full-text trials.

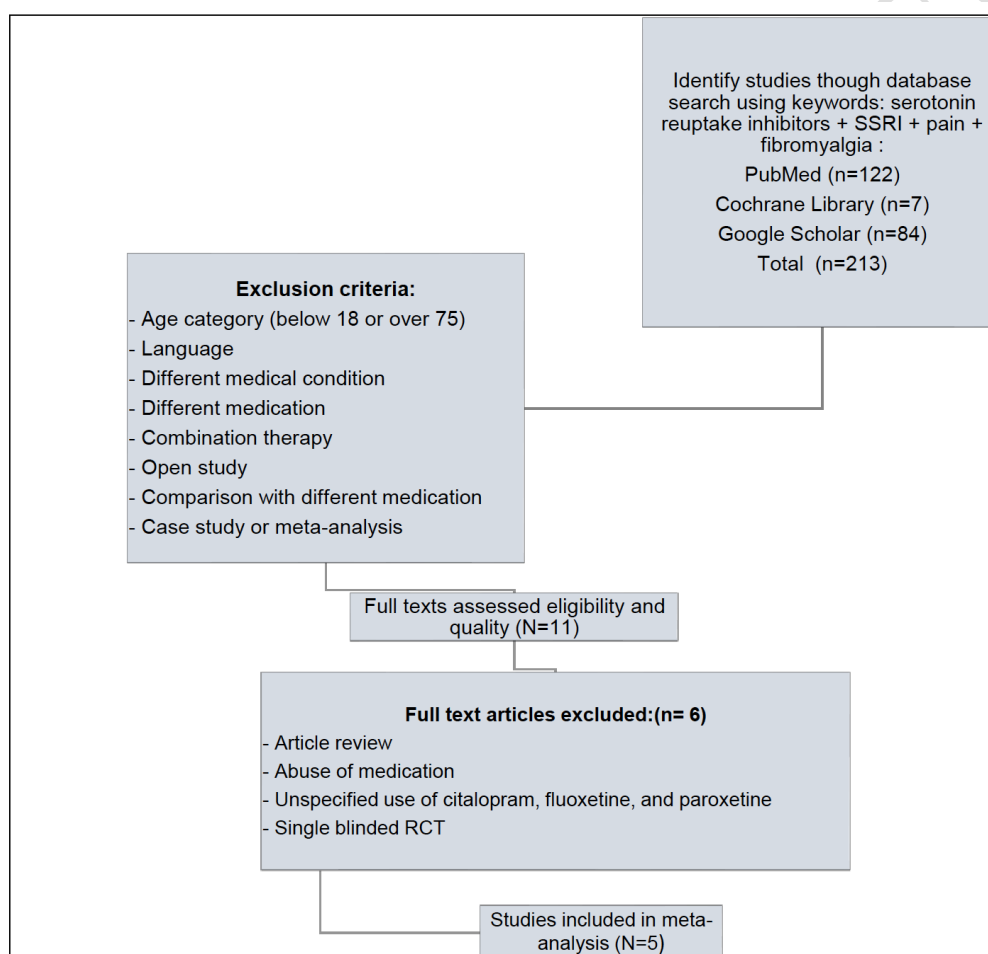


Figure 1: PRISMA flow diagram demonstrating search strategy, n=number.

Quality Assessment Issues Involving Unit Analysis

The evaluation of the study quality was based on the premise of the Jadad scale, which is used to classify quality with a scale from 0-5 where a score of 0-3 indicates a ~~poor-quality~~poor quality study and a score of 4-5 indicates a good quality study (15). The Jadad scale is highly reliable and appropriate for this study, as a meta-analysis study carried out by Häuser et al. on the same topic using the Jadad scale, ~~supportingsupports~~ its efficacy and reliability (24). Therefore, the scale has been used previously in a similar study (10) which provided the confidence to use it in this study. Two questions were also formulated for inclusion in the analysis: Q1: Does the study contain ~~randomisation~~randomization and blinding, and Q2:Does it also ~~havehas~~ cases of withdrawal or leakage? As a result, five studies were suitable for critical evaluation and were included in this study (see Appendix 1).

Data Extraction and Analysis

A meta-analysis method was used to pool the results of these independent studies. Statistical analyses will be performed to pool outcome data for trials that compare the same intervention with the same comparator before inputting them into RevMan5, which is a software application used to facilitate the review professionally, run statistical analysis, show the risks of bias, and manage references (16). Also, it is available on the university's website in the Student Centre and with a video explanation, and it

can be downloaded straightforwardly. The isolated information was that of sample size, length of treatment, intervention, and outcome measure (16). The primary outcome was defined as pain reduction, and secondary outcomes assessed major adverse effects at any time of the study and premature withdrawal.

The pain improvement score was tested by the Visual Analogue Scale (VAS), which is a random-effects model applied to incorporate between-study variability. The data were analysed through the generation of standard deviation of the mean with a confidence interval of 95%. The standard deviation of the mean of the affected size was calculated by dividing the mean difference in change of the effect size measures by the standard deviation. Forest plots were created from the inputted data to provide a graphical representation of the pooled information, which provided an estimate of the overall treatment effect.

Issues Involving Unit-of-Analysis

Some issues were faced when reviewing the literature as, firstly, several studies reported the baseline value of the outcome of pain as a mean and standard deviation; however, this value was not reported in the same format after the intervention. In fact, the study by Norregaard provides the mean change value and the standard deviation after the final intervention (17). Some studies also reported values from the start and change, while some reported mean values at baseline and follow-up and did not report a change in mean score, as can be seen in Wolfe's study (13). An issue in Norregaard's study included a problem in the unit of analysis (17) as the objective was to evaluate the change in pain following SSRI therapy, so the change scores were used.

To do this, the result from studies that reported baseline and follow-up mean scores were extracted by calculating the change score. This was done by subtracting the mean VAS pain score at the final time point from its baseline value. Thus, the result was altered, and the change in the mean score was calculated by subtracting the mean VAS pain score at the final time point from its baseline value. The baseline means pain VAS score minus the final time point mean pain VAS score equals the change in the mean pain VAS score. The change number was used to make all the units in the studies uniform.

A rough guide to the interpretation in the context of the meta-analysis of randomised trials is as follows: 0% to 40% might not be important; 30% to 60% may represent moderate heterogeneity; 50% to 90% may represent substantial heterogeneity, and 75% to 100% may represent considerable heterogeneity. I² shows the heterogeneity of results, which identifies the difference or variance of the results of the studies used in the analysis. Whilst a good heterogeneity is desirable, as it shows that the meta-analysis included diverse studies, it should not be too high as it contradicts the meta-analysis by showing a higher variance in results extracted from the studies (18).

4. Results

Description of Studies

The three databases, PubMed, Cochrane Library, and Google Scholar, were searched using the abovementioned keywords, and 213 studies were generated. A total of 202 papers were excluded as they did not meet the inclusion criteria based on the premise of different conditions, age category (below 18 or over 75), language, different medical conditions, different medication combination therapy, open study, comparison with different medication, and case study or meta-analysis. 11 full-text articles were obtained; however, 6 of these studies were excluded at this stage due to abuse of medication, unspecified use of the type of SSRI or using a single-blinded RCT. This left a total of five studies included for analysis.

Characteristics of Studies Included

A total of 243 patients were included in this meta-analysis. The majority of participants in the studies were females and were in ages > 45 years. All studies used the American College of Rheumatology (ACR) 1990 diagnostic criteria for confirmation of fibromyalgia. With regards to the location of the study venues, three studies were conducted in the US, and two studies were conducted in European countries. In terms of the length of the studies, they ranged between 6 and 16 weeks. With regards to the comparison of intervention, fluoxetine, paroxetine, and citalopram were compared with placebo. All studies use a parallel study design. All studies involved one intervention against a placebo and provided the primary outcome for pain. However, four of five studies provided the data for the secondary outcome: adverse effects at any time of the study and premature withdrawal. The details of the studies selected for pain are provided in table 1.

Results of Outcomes

Primary Outcome: Pain

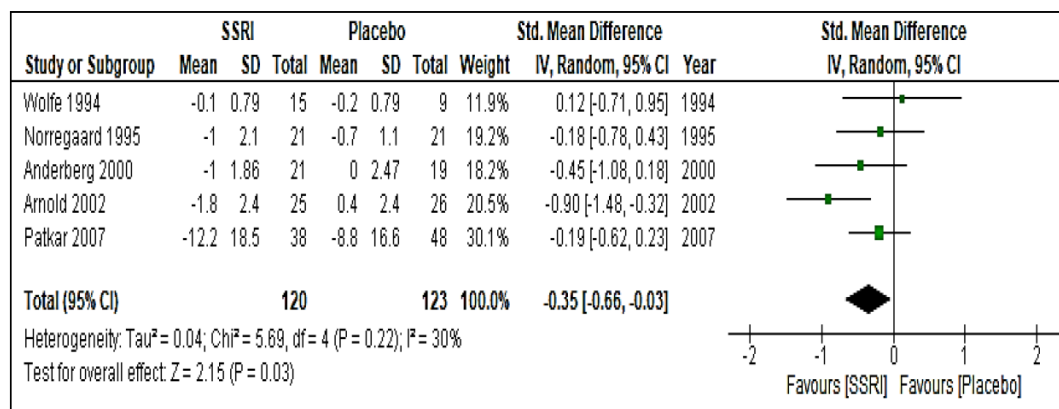
The primary outcome, the intensity of pain, was assessed in each study using the Visual Analogue Scale (VAS). This scale is a measuring tool that attempts to quantify a feature or attitude that is thought to vary over a continuum of values but is difficult to measure directly. The VAS score is calculated by measuring in millimetres from the line's left end to the point where the patient makes a mark (19). Three studies, Anderberg, Norregaard, and Arnold, used VAS 1 – 10mm (10, 17, 20). Patkar's study utilised VAS 1 – 100mm, and Wolfe's study used VAS 0 – 3mm (13). A total of 5 studies were analysed, with 120 participants in the SSRI group and 123 participants in the placebo group. The details of the data are presented in table 1 below:

191 Table 1: Primary Outcomes (Pain)

Studies	SSRI Group			Placebo Group			Total	Std mean differences
	Std. Mean Difference VAS pain score at study endpoint	SD	Total participants	Std. Mean Difference VAS pain score at study endpoint	SD	Total participants	The trial population at the endpoint	Effect size
Wolfe 1994	-0.1	0.79	15	-0.2	0.79	9	24	0.12
Norregaard 1995	-1	2.1	21	-0.7	1.1	21	42	-0.18
Anderberg 2000	-1	1.86	21	0	2.47	19	40	-0.45
Arnold 2002	-1.8	2.4	25	0.4	2.4	26	51	-0.90
Patkar 2007	-12.2	18.5	38	-8.8	16.6	48	86	-0.19

192 Study Result Summary

193 Following, the data was entered in Revman5, and the confidence intervals revealed thin horizontal lines emerging from the
 194 box indicating the magnitude of the confidence interval. In addition, horizontal lines in the forest 21 plot were seen for all studies
 195 except Arnold's, which crossed the zero line; this shows no effect in any group in Figure 2. The zero line shows no significance, and
 196 the results did not favour favor any side. The effect of the study is shown by the small squares; for instance, a study with a small
 197 number of participants will show a small square. However, the random effect model used in this study has been selected to manage
 198 the effect demonstrated by the small and large squares together and not to consider small squares as a lesser contribution to the
 199 study and large squares as a greater contribution like in a fixed-effects model. Furthermore, random effects were used to take into
 200 consideration all potential differences between the studies and the small sample size of each. All studies displayed in Figure 2
 201 favoured favored the use of SSRISSRIs except Wolfe'sWolfe's, which used a small number of participants in the placebo group. The
 202 weight column in the forest plot figure shows how much each study contributed in total, and using the random-effects model does
 203 not impact the study results according to participant sample size. The diamond shown in black shows the total effect result; the top
 204 side of the diamond is the result, and the sides are 95% confidence intervals. The standard mean difference (SMD) method was
 205 selected in Revman5 as the VAS score for pain in studies showed a continuous variable. The studies included in the meta-analysis
 206 for pain management show moderate heterogeneity. This is also shown by the test of heterogeneity with a p-value greater than 0.05
 207 and an I2 value less than 50%. If the I2 value is more than 50% and the p-value is significant, then the study results differ from each
 208 other. The overall result of this meta-analysis demonstrates that the SSRI group 22 demonstrated a statistically significant reduction
 209 in pain ($Z = 2.15$, $p\text{-value} = 0.03$), as shown in the overall effect of the forest plot.



212 Figure 2: Forest plot of SMD and 95% CI related to SSRI vs Placebo for pain

213 Secondary Outcome: Main Side Effects of SSRI

214 Whilst the studies showed that there were several side effects, including dry mouth and sexual dysfunction, the main side effect of
 215 SSRI treatment which will be discussed, was nausea. As shown in Figure 3, nausea was the most reported side effect in the included
 216 studies reported by four of the five included. The total effect size (occurrence of nausea) seems to ~~favour~~[favour](#) the SSRI groups
 217 versus the placebo groups. However, the confidence interval crosses the middle line, which points out that there was no significant
 218 difference between the intervention and the placebo groups. A fixed-effect model performs well in this meta-analysis due to the
 219 small heterogeneity between groups as $I^2=8\%$, and the test of heterogeneity was not significant ($p=0.350$). Moreover, the use of the
 220 random-effect model resulted in similar meta-analysis results as the risk ratio was used as an effect-size measure because the
 221 outcome (occurrence of nausea) is dichotomous.

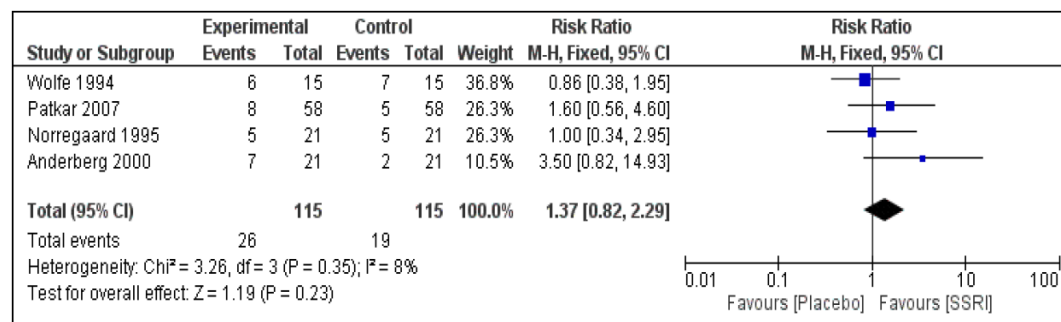


Figure 3: Forest plot of RR with 95% CI of SSRI vs placebo for at least one adverse effect

Study Quality

The studies analyses show varying levels of quality, with Wolfe and Arnold's studies showing the highest scores on the Jadad scale with a total of 5 points, followed by Norreggard and Anderberg and Patkar's studies which each received 4 points. It is important to mention that all studies included in the analysis received good scores of 4-5 points in total, showing high levels of quality (15) (see Appendix 1). The following discusses a breakdown of how the points were awarded for each study.

Woolfe's study received 2 points for [randomisationrandomization](#) and 2 points for blinding, which is an effective and appropriate method, as well as 1 point for the data of patients mentioned in the paper. Arnold's study received 2 points for [randomisationrandomization](#), 2 points for the blinding methods used, and 1 point for providing the [patients'-patients'](#) data. The studies by Norreggard and Anderberg, and Patkar all received a total of 4 points. Norreggard's study received 1 point for [randomisationrandomization](#) as one point was deducted due to incomplete [randomisationrandomization](#). Methods including a blinded process were used, which resulted in the study being awarded 2 points and another 1 point for providing patients' data. Whilst Anderberg's received 2 points for [randomisationrandomization](#), 1 point for [randomisationrandomization](#) as the process was not clear, and 1 point for providing [patients'-patients'](#) data. Patkar's study obtained 2 points for [randomisationrandomization](#); the use of a blinding method allowed the study 1 point; however, the method was inappropriate, and finally, another 1 point for providing the patients' data.

Risk of Bias

The risk of bias was assessed by Revman5. The studies included were Wolfe's, Norregaard's, Anderberg's, Arnold's, and Patkar's, which will be discussed in detail below. The study by Wolfe described how a random sequence was generated and mentioned; therefore, it showed low risk in this aspect (13). However, the study provided no information ~~for~~[on](#) allocation concealment or the blinding process of participants, and outcomes [suggestingsuggested](#) an unclear risk (13).

The study also reports incomplete data and reported some analysis based on intention-to-treat analysis and some on completer analysis, which showed high risk. No information for selective reporting was provided; hence the risk is not clear for this study (13). The study by Norregaard describes no information for random sequence generation, allocation concealment, and the blinding of outcome assessments, suggesting that the risk is not clear (17). The blinding of participants was clearly described; therefore, the risk is low for this aspect(17). However, the study reports incomplete data and reported some analysis 25 based on intention-to-treat analysis and some on completed analysis, showing a high risk (17). Furthermore, there was no information for selective reporting,so the risk is not clear for this study (17). The study by Anderberg described the random sequence generation process and allocation concealment, showing low risk in these areas (20). No information was included for blinding of participants and outcomes and selective reporting; therefore, the risk is not clear (20). The study reports incomplete data and reported some analysis based on intention-to-treat analysis and some on completed analysis, showing a high risk (20). Arnold's study only provides information on the blinding of tablets for participants, revealing a low risk (10). All other information is not present; therefore, the risk is not clear (10). The study by Patkar describes the random sequence generation by computer, allocation concealment from staff, and tablets being blinded, showing a low risk in these areas (12). However, the study gives no information about the blinding of the outcome, in-

complete outcome data, and selective reporting; therefore, the risk is not clear (12). Figure 4 and Figure 5 demonstrate these results are included below (see Appendices 5, 7, 9, 11 and 13).

Risk of Bias Summary

	Random sequence generation (selection bias)	Allocation concealment (selection bias)	Blinding of participants and personnel (performance bias)	Blinding of outcome assessment (detection bias)	Incomplete outcome data (attrition bias)	Selective reporting (reporting bias)
Anderberg 2000	+	+	?	?	-	?
Arnold 2002	?	?	+	?	?	?
Norregaard 1995	?	?	+	?	-	?
Patkar 2007	+	+	+	?	?	?
Wolfe 1994	+	?	?	?	-	?

Figure 4: Review of author's ~~judgements~~judgments on each risk of bias item for each study included (see Appendices 5, 7, 9, 11 and 13).

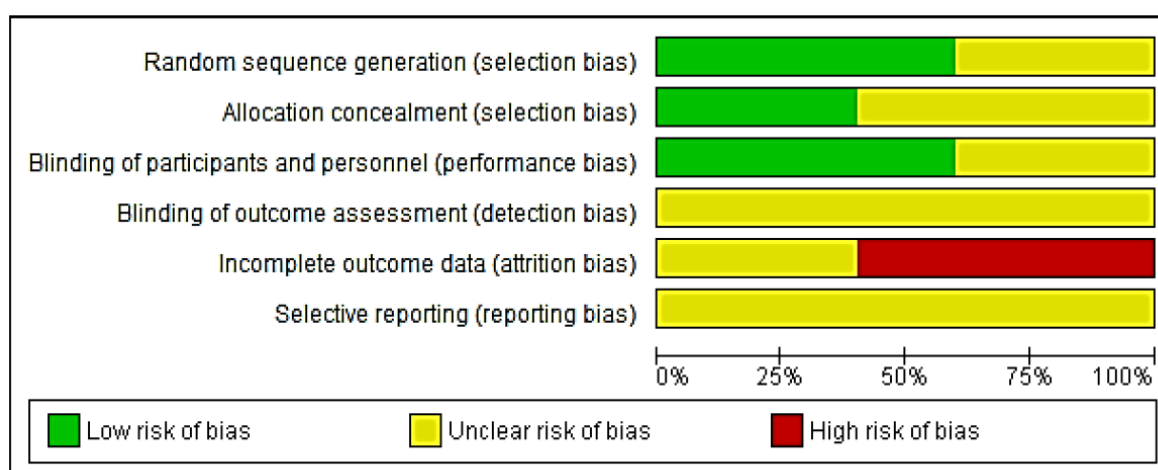


Figure 5: Risk of bias graph showing author's ~~judgements~~judgments on each risk of bias item presented as percentages across all included studies (see Appendices 5, 7, 9, 11, and 13).

272 5. Discussion

273 | Authors should discuss the results and how they can be interpreted from the perspective of previous studies and ~~of~~ the
274 working hypotheses. The findings and their implications should be discussed in the broadest context possible. Future research di-
275 rections may also be highlighted.

276 In this research project, a meta-analysis of five randomized placebo-controlled studies was carried out to establish the efficacy
277 of SSRIs as pain management in patients with fibromyalgia compared to a placebo. The main aim of this study was to screen the
278 effect of SSRIs on the pain experienced by patients with fibromyalgia. Assessing the potential inhibitory effects of SSRIs on the pain
279 sensation felt by this patient group is important for two important reasons. First, fibromyalgia is a critical cause of widespread se-
280 vere pain, and secondly, ~~as~~ it is a common treatment as illustrated by a German study that found 16% of patients who have fi-
281 bromyalgia were prescribed SSRIs (21) however, under-researched. Therefore, this work aims to provide scientific guidance to
282 prescribers and patients regarding the benefits of SSRIs.

283 The currently available literature is conflicting, as several studies reported positive results, and ~~there are~~ other studies ~~that~~
284 report negative results. One study found that there is no significant difference between the effect that fluoxetine and a placebo have
285 on pain levels (13). This latter study also had a few limitations: for example, the duration of the trial was short, and the amount of
286 patient withdrawal was high in the placebo group (13). Another study, which was conducted by Goldenberg concludes that fluox-
287 etine is effective (22), yet another trial of fluoxetine reports a better score for pain, and a trial of citalopram found no significant
288 reduction in pain in the citalopram group (17). On the other hand, a study by Anderberg shows significant pain reduction (20).
289 These results show that SSRIs have a very small advantage in reducing pain in patients with fibromyalgia. The studies were evalu-
290 ated using the Jadad scale and clearly showed good quality with scores of 4 and 5. The Jadad scale was used because the studies
291 included in this project were published before the release of the CONSORT 2010 data reporting guidelines (23). Thus, this reporting
292 guideline would not have been used, and other newer scales may review a study based on this guideline.

293 This study's result indicates that studies of acceptable quality (those with a Jadad scale score ≥ 4) show that SSRIs provide some
294 benefit in reducing the pain experienced by patients with fibromyalgia when compared with a placebo.

295 The benefit of this work is that it serves as evidence that informs health agencies to consider allowing doctors to prescribe
296 SSRIs to patients with fibromyalgia for pain relief. The results of this work are similar to that of other meta-analyses on the same
297 topic, with these other meta-analyses also finding that SSRIs, for example, fluoxetine, paroxetine, and citalopram, are slightly more
298 beneficial when compared to a placebo in reducing pain and depression caused by fibromyalgia (10, 12, 25). A positive outcome
299 from this review of randomized controlled trials (RCTs) is that no study reported any major adverse effects of the SSRIs used in the
300 trials, and no unexpected number of patients dropping out was recorded, suggesting that SSRIs are well tolerated by patients (12).

301 The most common adverse effects reported by the studies were nausea, dry mouth, and sexual dysfunction (11). There is evi-
302 dence published in the literature that drugs that are in the SSRI group may cause these problems (26). During the review, it was
303 noticed that one study by Patkar et al. reported more adverse effects in both groups, but the number of patients in the SSRI group
304 was higher due to the number of patients withdrawing from this group increasing (12). Several clinical practice guidelines around
305 the world support this project's results. For example, the EULAR guidelines support the use of fluoxetine for fibromyalgia (27), and
306 the American Society of Pain also indicates fluoxetine for pain relief for this disease (28). Thus, it can be said that these results are in
307 line with the recommendations in clinical practice guidelines.

308 Limitations of Study

309 Some limitations should be acknowledged as the studies included in this metaanalysis comprise patients with fibromyalgia
310 who do not have other health comorbidities. Therefore, it is unknown if this work's results can be applied to patients with fibrom-
311 yalgia who have additional health problems. In addition, most studies only comprised females, making it difficult to apply the re-
312 sults to male patients (although fibromyalgia is uncommon in this patient group).

313 Further, the studies used for this project carried out their research on SSRIs for a limited time, for instance, between 6 and 12
314 weeks, and no information about follow-ups after the trials ended is provided. It is reported in the published literature that SSRIs
315 also have withdrawal effects (29); however, no evidence of withdrawal effects is reported in these studies. Moreover, no study con-
316 firmed that patient adherence to the drug treatment was good. Additionally, it is not known from these trials if SSRIs will work in
317 the long term. The average age of the patients in the studies included in this project was over 45 years old, so it is difficult to apply
318 the results to young patients with this disease. Furthermore, no data on other medications used by the patients was provided.
319 Currently, no SSRI has been approved for use for fibromyalgia, and the American food and drug agency (FDA) has ordered a black
320 box warning message ~~to~~ be used for SSRIs as according to the FDA, the use of SSRIs can increase the tendency of patients to commit
321 suicide (30). Therefore, the benefit of this work is limited as this warning reduces the likelihood of physicians prescribing SSRIs for
322 pain caused by fibromyalgia.

323 Study Recommendations

324 In future studies, patients in other age groups and the male gender should be included as well as studies of a longer duration.
325 It is also recommended that future trials include the use of SSRIs in fibromyalgia by comparing their effectiveness with the use of
326 other anti-depressants, such as selective serotonin-norepinephrine inhibitors (SNRIs) and tricyclic anti-depressants (TCAs), to ob-
327 serve the effect this has on the pain experienced by patients with fibromyalgia. It is also important to consider other pain relief op-

tions such as cognitive-behavioural therapy (CBT) that may provide pain relief, as shown by previous studies to decrease the side effects of SSRI (31) and aerobic exercise, which has also been proven to provide pain relief (32).

6. Conclusion and Implications for Practice

The results of this study have shown clear evidence that SSRIs are effective in providing pain management for patients with fibromyalgia. Also, preferably in female patients aged over 45 years old, in the absence of other health problems except for fibromyalgia. In addition, the treatment also not caused a severe side-effects, some of which warranted pre-mature withdrawal from trials. However, SSRIs can only be considered for pain management in patients with fibromyalgia for a short duration as a longer duration of SSRI use is not recommended due to the risk of increased tendency to commit suicide, according to the FDA. Moreover, the close monitoring of the potential withdrawal effects is necessary. This study has also shown that the use of SSRIs as a mono-therapy only provides a limited reduction in pain in patients with fibromyalgia; therefore, other pain management options should be considered.

COMPETING INTERESTS DISCLAIMER:

Authors have declared that no competing interests exist. The products used for this research are commonly and predominantly used products in our area of research and country. There is absolutely no conflict of interest between the authors and producers of the products because we do not intend to use these products as an avenue for any litigation but for the advancement of knowledge. Also, the research was not funded by the producing company rather it was funded by the personal efforts of the authors.

References

1. Häuser W, Ablin J, Fitzcharles M-A, Littlejohn G, Luciano JV, Usui C, et al. Fibromyalgia. Nature reviews Disease primers. 2015;1(1):1-16.
2. Walitt B, Urrútia G, Nishishinya MB, Cantrell SE, Häuser W. Selective serotonin reuptake inhibitors for fibromyalgia syndrome. The Cochrane database of systematic reviews. 2015;2015(6):Cd011735.
3. Mandrioli R, Mercolini L, Saracino MA, Raggi MA. Selective serotonin reuptake inhibitors (SSRIs): therapeutic drug monitoring and pharmacological interactions. Current medicinal chemistry. 2012;19(12):1846-63.
4. Yancey J, Hydrick EN. Selective Serotonin Reuptake Inhibitors for Fibromyalgia. American family physician. 2016;94(7):548-9.
5. Carrasco JL, Sandner C. Clinical effects of pharmacological variations in selective serotonin reuptake inhibitors: an overview. International Journal of Clinical Practice. 2005;59(12):1428-34.
6. David DJ, Bourin M, Jegu G, Przybylski C, Jolliet P, Gardier AM. Effects of acute treatment with paroxetine, citalopram and venlafaxine in vivo on noradrenaline and serotonin outflow: a microdialysis study in Swiss mice. British journal of pharmacology. 2003;140(6):1128-36.
7. Ghose K. Tolerance and side-effects of paroxetine in elderly depressed patients. Archives of gerontology and geriatrics. 1997;24(1):35-45.
8. Gutierrez MM, Abramowitz W. Pharmacokinetic comparison of oral solution and tablet formulations of citalopram: a single-dose, randomised, crossover study. Clinical therapeutics. 2000;22(12):1525-32.
9. Brambilla P, Cipriani A, Hotopf M, Barbui C. Side-effect profile of fluoxetine in comparison with other SSRIs, tricyclic and newer antidepressants: a meta-analysis of clinical trial data. Pharmacopsychiatry. 2005;38(02):69-77.
10. Arnold LM, Hess EV, Hudson JI, Welge JA, Berno SE, Keck PE, Jr. A randomised, placebo-controlled, double-blind, flexible-dose study of fluoxetine in the treatment of women with fibromyalgia. The American journal of medicine. 2002;112(3):191-7.
11. Malesud C. Focus on pain mechanisms and pharmacotherapy in the treatment of fibromyalgia syndrome. Clin Exp Rheumatol. 2009;27(Suppl 56):S86-91.
12. Patkar AA, Masand PS, Krulwicz S, Mannelli P, Peindl K, Beebe KL, et al. A randomised, controlled, trial of controlled release paroxetine in fibromyalgia. The American journal of medicine. 2007;120(5):448-54.

-
- 379 13. Wolfe F, Cathey M, Hawley D. A double-blind placebo controlled trial of fluoxetine in fibromyalgia. *Scandinavian journal of*
380 *rheumatology*.1994;23(5):255-9.
- 381 14. Klein R, Berg P. High incidence of antibodies to 5-hydroxytryptamine, gangliosides and phospholipids in patients with chronic
382 fatigue and fibromyalgia syndrome and their relatives: evidence for a clinical entity of both disorders. *European journal of*
383 *medical research*. 1995;1(1):21-6.
- 384 15. Jadad AR, Moore RA, Carroll D, Jenkinson C, Reynolds DJM, Gavaghan DJ, et al. Assessing the quality of reports of ran-
385 domised clinical trials: is blinding necessary? *Controlled clinical trials*. 1996;17(1):1-12.34
- 386 16. Manager R, (RevMan). [Computer program] Version 5.4, The Cochrane Collaboration 2020 [Available from:
387 https://training.cochrane.org/system/files/uploads/protected_file/RevMan5.4_user_guide.pdf.
388
- 389 17. Nørregaard J, Volkmann H, Danneskiold-Samstøe B. A randomised controlled trial of citalopram in the treatment of fibrom-
390 yalgia. *Pain*.1995;61(3):445-9.
- 391 18. Deeks JJ, Higgins JP, Altman DG, Group CSM. Analysing data and undertaking meta-analyses. *Cochrane handbook for sys-*
392 *tematic reviews of interventions*. 2019:241-84.
- 393 19. Crichton N. Visual analogue scale (VAS). *J Clin Nurs*. 2001;10(5):706-6.
- 394 20. Anderberg UM, Marteinsdottir I, von Knorring L. Citalopram in patients with fibromyalgia--a randomised, double-blind,
395 placebo-controlled study. *European journal of pain (London, England)*. 2000;4(1):27-35.
- 396 21. Marschall U, Arnold B, Häuser W. Treatment and healthcare costs of fibromyalgia syndrome in Germany: analysis of the data
397 of the Barmer health insurance (BEK) from 2008-2009. *Schmerz (Berlin, Germany)*.2011;25(4):402-4, 6.
- 398 22. Goldenberg D, Mayskiy M, Mossey C, Ruthazer R, Schmid C. A randomised, double-blind crossover trial of fluoxetine and
399 amitriptyline in the treatment of fibromyalgia. *Arthritis & Rheumatism*. 1996;39(11):1852-9.
- 400 23. Turner L, Shamseer L, Altman DG, Schulz KF, Moher D. Does use of the CONSORT Statement impact the completeness of
401 reporting of 35 randomised controlled trials published in medical journals? *A Cochrane review a. Systematic reviews*.
402 2012;1(1):1-7.
- 403 24. Häuser W, Bernardy K, Üçeyler N, Sommer C. Treatment of fibromyalgia syndrome with anti-depressants: a meta-analysis.
404 *Jama*.2009;301(2):198-209.
- 405 25. Häuser W, Wolfe F, Tölle T, Üçeyler N, Sommer C. The role of antidepressants in the management of fibromyalgia syndrome.
406 *CNS drugs*.2012;26(4):297-307.
- 407 26. Clayton AH, Croft HA, Handiwala L. Antidepressants and sexual dysfunction: mechanisms and clinical implications. *Post-*
408 *graduate medicine*.2014;126(2):91-9.
- 409 27. Carville SF, Arendt-Nielsen S, Bliddal H, Blotman F, Branco J, Buskila D, et al. EULAR evidence-based recommendations for
410 the management of fibromyalgia syndrome. *Annals of the rheumatic diseases*. 2008;67(4):536-41.
- 411 28. Burckhardt C, Goldenberg D, Crofford L, Gerwin R, Gowans S, Jackson K, et al. Guideline for the management of fibromyalgia
412 syndrome pain in adults and children. *APS clinical practice guidelines series*. 2005(4).
- 413 29. Fava GA, Gatti A, Belaise C, Guidi J, Offidani E. Withdrawal symptoms after selective serotonin reuptake inhibitor discon-
414 tinuation: a systematic review. *Psychotherapy and psychosomatics*. 2015;84(2):72-81.
- 415 30. Busch SH, Frank RG, Leslie DL, Martin A, Rosenheck RA, Martin EG, et al. Anti-depressants and suicide risk: how did specific
416 information in FDA safety warnings affect treatment patterns? *Psychiatric services*.2010;61(1):11-6.36
- 417 31. Bennett R, Nelson D. Cognitive behavioral therapy for fibromyalgia. *Nature Clinical Practice Rheumatology*. 2006;2(8):416-24.
- 418 32. Busch AJ, Webber SC, Brachaniec M, Bidonde J, Dal Bello-Haas V, Danyliw AD, et al. Exercise therapy for fibromyalgia. *Cur-*
419 *rent pain and headache reports*. 2011;15(5):358.
- 420