

Original Research Article

IN -VITRO EVALUATION OF THE ANTIFUNGAL ACTIVITY OF ESSENTIAL OILS OF SOME MEDICINAL PLANTS ON PHYTOPATHOGENIC STRAINS IN THE KISANGANI REGION (DRC)

ABSTRACT

Purpose: This The present study evaluates the antifungal activity of essential oils of *Curcuma longa* and *Eucalyptus globulus* on strains of *Lasiodiplodia theobromae* and *Pseudocercospora fijiensis* in the Kisangani region (DR Congo).

Methods: The essential oils were obtained after extraction by the hydro distillation method. The isolation of strains of *L. theobromae* was made from the fragments of mesocarp taken from the diseased cocoa, previously cut with a Scarpel and then disinfected with bleach water, while the strains of *P. fijiensis* were obtained by the method of discharging ascospores on agar medium (H₂O H₂O Agar) and then transplanting on petri dish potato dextrose agar in solid medium (PDA). In addition, inhibition of mycelial growth on a PDA petri dish in solid medium (PDA) was used as a method to assess the sensitivity of strains to the essential oils of the medicinal plants studied.

Results: The results obtained show that the essential oils of the rhizomes of *C. longa* and the leaves of *E. globulus* showed a low yield in of essential oils (EOs) of 0.50% and 0.48% respectively. However, the EOs of the rhizomes of *C. longa* and the leaves of *E. globulus* exhibited inhibitory action on the mycelial growth of strains of *L. theobromae* and *P. fijiensis*.

Conclusion: The ANOVA test [This test didn't mention in M&M] applied to the mean mycelial growth values of these two strains (*L. theobromae* and *P. fijiensis*) on the HE of *C. longa* showed that the difference is not significant (p-value = 0.47). In addition, there is also no significant difference (p-value = 0.51) between the mean mycelial growth values of these two fungal strains on the essential oil of *E. globulus*.

Keywords: Antifungal activity, essential oils, medicinal plants, phytopathogenic strains, and In-Vitro, *in vitro*.

1. INTRODUCTION

For a long time, essential oils (EOs) have occupied a prominent place both in the perfume industry and in the pharmaceutical, culinary and canned food fields. Currently. In addition,

chemists, biologists, and doctors are constantly increasing their interest in these natural substances because of due to their important role uses in the treatment of certain infectious diseases for which synthetic antibiotics are becoming less and less effective, active or in the preservation of food against oxidation as alternatives to synthetic chemicals (1).

Despite its age, ?? the study of EOs is still relevant. The continued development of plant biotechnologies has been a major concern of researchers in recent years. Thus, the progress of science has revolutionized the history of aromatherapy (2).

Pests including plant pathogenic fungi among others continue to wreak havoc on food and cash crops. The cultivation of banana and plantain trees is threatened by the numerous attacks of diseases caused by fungi, nematodes and weevils, viruses, bacteria ... (3).

Black Leaf Streak Disease is among the various pests that these crops face (Black Leaf Streak Disease), it is the most serious leaf disease, being the most destructive and the most expensive in terms of control methods (4).

Black ray disease (MRN) or black *cercosporiosis* of the banana and plantain is caused by the fungus *Pseudocercospora fijiensis* (former name *Mycosphaerella fijiensis*) (5).

One of the most common diseases in the species *Theobroma cacao* is the black rot of pods. It is caused by *Lasiodiplodia theobromae* and causes significant production losses worldwide (6).

In the Democratic Republic of Congo, particularly the Kisangani region, few studies have been conducted on the *in vitro in vitro* evaluation of the antifungal activity of EOs on the against fungal strains of cocoa and banana trees. For this reason, this. The present study was conducted to evaluate the effectiveness of *Cucurma longa* and *Eucalyptus globulus* EOs on against the fungal strains *L. theobromae* and *P. fijiensis* to control these diseases in our Kisangani region.

2. MATERIAL AND METHODS

2.1. Study Area

This The study was carried out in the city of Kisangani, the capital of the province of Tshopo (Figure 1). This city is located in the Central Congolese basin, at 0° 31' 00" North and 25° 11' 00" East. Its average altitude is 396 m (7). Administratively, Kisangani is made up of 6 communes: Makiso, Lubunga Mangobo, Kabondo, Kisangani, and Tshopo, covering a total area of 1,910 km² (8).

The position of Kisangani city near the Equator as well as the set of ecoclimatic data gives it an equatorial climate of the Af?? type in the Köppen classification. This type of climate characterizes regions where the average temperature of the coldest month is above 18 °C (9). Thus, Kisangani soils can be classified into two main groups: soils from bedrock and derived

soils, growing on alluvium. These soils are generally ferritic, sandy-clay and acidic. They are deep and heavily leached by rainwater (10).

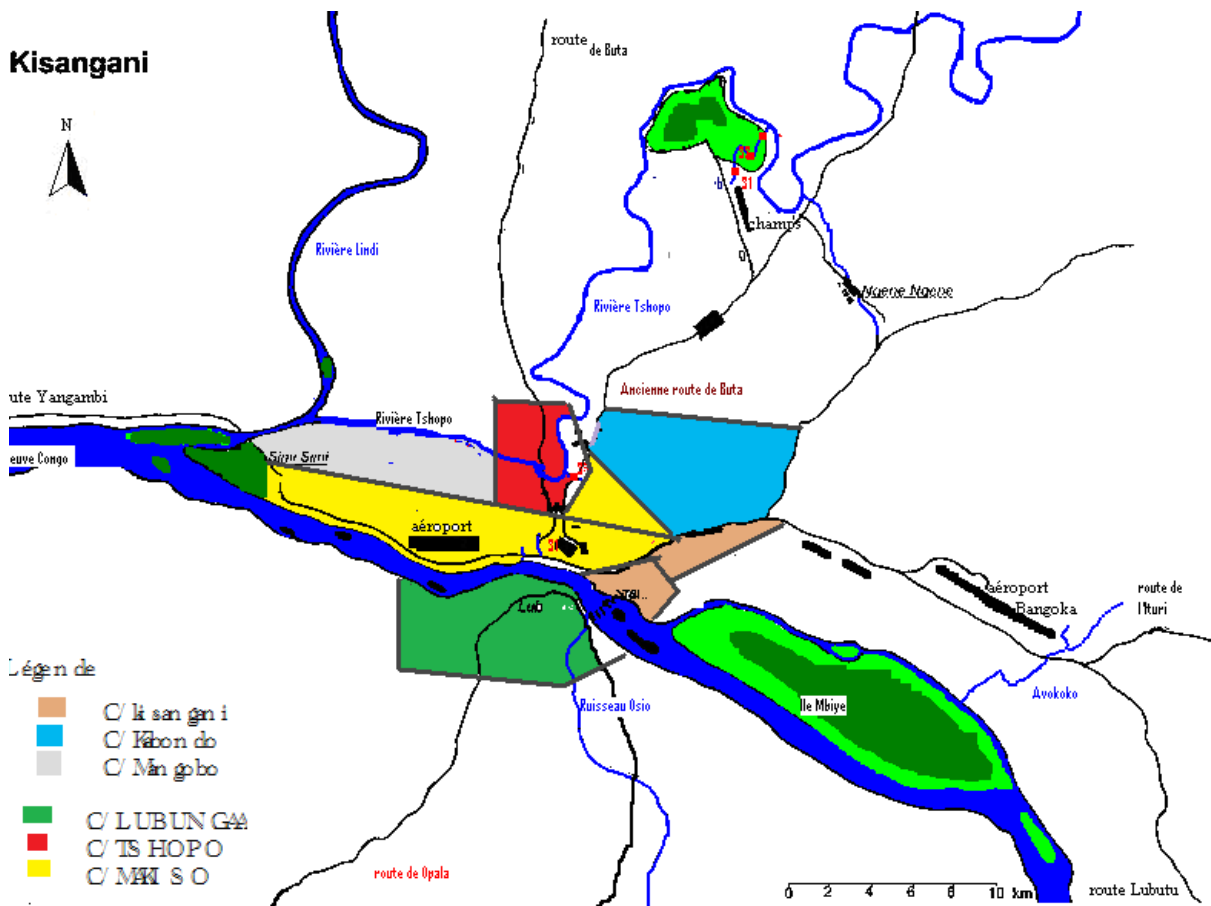


Fig. 1 KISANGANI City Map (8)

2.2. Material

2.2.1. Plants [Please note that 2.2.2 should be obtaining the strains]

Two medicinal plants, *C. longa* and *E. globulus*, were the subject of used in this study. The latter were harvested in places with little traffic, in the morning in hot and dry weather. Only the healthy parts of the plant were harvested according to the method of Debuigne (11).

1. *Curcuma longa*

(a) Systematic classification

C. longa is part of the family Zingiberaceae and the genus Curcuma which includes hundreds of plant species (12).

- Reign: *Plantae*;
- Division: *Magnoliophyta*;
- Class: *Liliopsida*;
- Order: *Zingiberales*;

- Family: *Zingiberaceae*;
- Genus: *Curcuma*
- Species: *C. longa*.

Native to India and South Asia, Curcuma is grown throughout Southeast Asia, and considered It is one of the central pieces of Ayurvedic medicine, are considered and a symbol of prosperity and good health (13). The plant is grown for its rhizomes, used as a dye, and spice for cooking. Chinese medicine also has a long tradition (14).

b) Botanical description

C. longa is a rhizomatous, herbaceous and perennial plant of the *Zingiberaceae* family, growing in all tropical climates, up to 1.50 m tall, with a short stem (13). The leaves are very long, having elliptical blades arranged in clumps (15).

As shown in Figure 2 below, it is a tuber plant whose flesh is orange-yellow and is both a spice, food and dye plant (16).



Figure 2: General appearance of *C. longa* rhizomes

2. *Eucalyptus globulus*

(a) Systematic classification

This species belongs to the genus *Eucalyptus*, family *Myrtaceae*, which includes about 90 genera with more than 600 species and varieties (17).

- Reign: *Plantae*;
- Division: *Magnoliophyta*;
- Class: *Magnolopsida*;
- Order: *Myrtales*;
- Family: *Myrtaceae*;
- Genus: *Eucalyptus*;
- Species: *E. globulus*.

It was the French botanist La Billardière who had discovered this plant in 1792, it's also called *Tasmanian Blue Gum*. This tree native to *Tasmania* (Australia) is grown today in the Mediterranean basin and in China where it's used to make paper pulp (18).

b) Botanical description

With a smooth trunk with the color varying from white to grey, [add a comma] this tree is 30 to 60 meters high and can reach in some cases up to 100 meters. Its bark is easily detached in long strips (18). The young leaves are waxy, oval, clear, opposite and sessile. These leaves can be up to 25 centimeters long (Figure 3). They have a main rib mostly distinct on the underside and are sickle-shaped, alternate, petiolate, grey-green (18).



Figure 3: *E. globulus* Leaves

In **this these** species, there are glands of EO secretions. These are schizogenic pockets secreting EO localized under the leaf epidermis in the palisade chlorophyll parenchyma. Their number is variable and is distributed differently in the leaves depending on the species. There is a strong correlation between secretory gland density and EO yield (17).

2.3. Methods

2.3.1. Preparation of the plants **studied**

The rhizomes of *C. longa* were used for fresh extraction while the leaves of *E. globulus* were harvested and dried at room temperature (**which is about °C ±**) in the laboratory for 2 weeks.

The Sartorius AX2202 scale was used to weigh 800 grams of the *C. longa* sample, fresh and *E. globulus*, after drying. The **quantity weighed** was then crushed before moving on to the extraction **method**.

2.3.2. **EOs** extraction

The extraction of **EOs** was done by the hydro distillation technique, according to the Levenger type C assembly (19).

This technique **consists of was performed by** heating the plant material in **the** presence of water until it boils. Thus, plant cells burst and release the odorous molecules that are driven by water vapour to the refrigerant where they condense. Then, a liquid is collected that is formed of two phases: the aqueous phase (the most abundant) and the organic phase consisting of **EOs** (20).

The A quantity of 800g were put in a round-bottomed flask and 7 liters of water **were** added, the whole was brought to a boil for 4 hours to obtain the distillate.

2.3.3. Calculation of yield

EOs yield is defined as the ratio of the mass of EO obtained to the mass of the treated plant material (21). It is calculated by the following **equation formula**:

$$Rd = M'/M * 100$$

With:

Rd: yield **in of EOs in** calculated as %;

M': mass of **he?? (Please clear what this abbreviation means?)** in gr;

M: mass of the plant matter used in gr.

2.3.4. Obtaining the strains

- Strain of *L. theobromae*

The isolation of the strains was done from the fragments taken from the diseased cocoa from Bengamisa, previously cut with a scalpel and then disinfected with bleach for two minutes and then rinsed with sterile distilled water.

These fragments were seeded with pliers on the **culture medium**, Potato Dextrose Agar **culture medium** (PDA, 39g/l) **already** solidified in Petri dishes (Figure 4). These boxes were taped with the parafilm and then incubated at 25°C under the darkness.



Figure 4: Strain of *L. theobromae* on a Petri dish. Upper (A) and underside (B).

[please use the words right image, and left image instead of upper].

- **Obtaining** Strain of *P. fijiensis*

The strains were isolated by the technique of discharging ascospores on agar medium (H₂O Agar) from banana leaf samples collected at the Faculty of Sciences of the University of Kisangani, then transplanted to PDA **medium** (3).

For landfilling, the pieces of necrotic leaves were cut and soaked in sterile distilled water for 20 minutes to moisten them. Then they were placed inside the lids of Petri dishes and placed on boxes containing 3% agar, the underside of the sheet directed upwards on the culture medium. The boxes were incubated at 25°C overnight (in the dark). The next day, the ascospores unloaded on the agar were transplanted individually on PDA **medium** (39 g/l).

The transplanting was done by observation under an inverted microscope (Motic AE21), carefully recovering, one by one, the ascospores discharged using a needle. Crops were incubated at 25°C under permanent white light (22). Figure 5 **below** shows the strain of *P. fijiensis* on a Petri dish.



Figure 5: Strain of *P. fijiensis* on a Petri dish, upper (A) and lower (B) **face??**.

[please use the words right image, and left image instead of upper].

2.3.5. Evaluation of antifungal activity

The Evaluation of the *in vitro* antifungal activity of EOs was performed in six repetitions. The mycelial growth of the strains is expressed based on the percentage of inhibition (PI). Indeed, 420 µl (0.42 ml) of the mixture consisting of EO and the 5% solution of Tween 80 (1:1 ratio) were added to 41580 µl (41.58 ml) of PDA cooled to 45°C 45 °C [please delete the spaces along the article] after sterilization. Thus, 7000 µl (7 ml) of this homogenized mixture were poured into each petri dish of 50 mm in diameter. A 5 mm diameter mycelial explant obtained after perforation, using a cookie cutter, was placed on the culture medium in each petri dish. Mycelial diameter (MD) was measured every 24 hours until maximum growth. The witness was made under the same conditions, but without EO and Tween 80 (23).

The following equation formula was used for the calculation of IP or PI as mentioned above:

$$IP \text{ PI} = ((DM \text{ MD}_{\text{Tell}} - DM \text{ Essential Oil}) \times 100) / (DM \text{ MD}_{\text{Tell-tale}})$$

Tween 80 (C₆₄H₁₂₄O₂₆) or polyoxyethylene (80) monolaurate sorbitan is a surfactant that solubilizes essential oils in water.

A total of 24 Petri dishes were seeded with the strain of *L. theobromae* including 6 boxes with *C. longa*; 6 boxes with *E. globulus*; 6 boxes with Tween 80; and 6 control boxes. Incubation was done at 25°C 25 °C [delete the space]. This same procedure was repeated for the strain of *P. fijiensis*.

3. RESULTS AND DISCUSSION

3.1 EOs performance

The percentage yield of EOs is presented in Table 1 below.

Table 1: EOs Performance

EO	Extraction mode	Yield in %
<i>C. longa</i>	Fresh hydrodistillation	0,50
<i>E. globulus</i>	Hydrodistillation (drying)	0,48

The results of this table show that the two plants have almost the same yield of essential oils, *i.e.* 0.50% for *C. longa* and 0.48% for *E. globulus*. This slight difference would could be due to the material subjected to distillation, one being fresh and the other is dry.

The yield of *C. longa* obtained in this study is lower than that reported found by Tidjinil & Taibi (24), *i.e.* 0.9%, much lower than that of Gounder & Lingamallu (25), *i.e.*, 3.52%. Aicha & Khadidja (26) also worked on the EO of *C. longa* and obtained 0.86%, while Soraya & Houda

(27) obtained 0.6% on the polyphenolic content of *C. longa*. In addition, the results of *E. globulus* are lower compared to Pereira et al. (28) which obtained 1.57% and Raho et al. (29) which is 1.2%.

On the other hand, our results are higher than those of Naziha & Rahma (30) or 0.07% and with those of Zakia (31) or 0.1% who worked on the EO of *E. globulus*. Please rephrase these results with language check. This difference in yield is due to the extraction method, packaging and place of collection of the sample, and the composition of chemical substances that may change depending on several factors including climate, environment and harvest period as well as the extraction technique.

Organoleptic parameters showed a resemblance between the two species of the plants studied. However, only the color marks the organoleptic difference between these two species. The table below Table 2, illustrates the organoleptic parameters of the EO used. (Table 2).

Table 2: Analysis of organoleptic parameters of EO

Parameters	<i>E. globulus</i>	<i>C. longa</i>
Appearance	Liquid	Liquid
Color	Dark- yellow	Light-yellow
Smell	Characterist	Characterist

This table reveals a color difference, either dark yellow for *E. globulus* or light yellow for *C. longa*. This difference would could be due to the organ of the plant used for the extraction of EO of the species studied (leaves for *E. globulus* and rhizome for *C. longa*) and the abundance of pigments according to the plants studied. Figure 6, below illustrates the EOs of the plants we used in the present study.

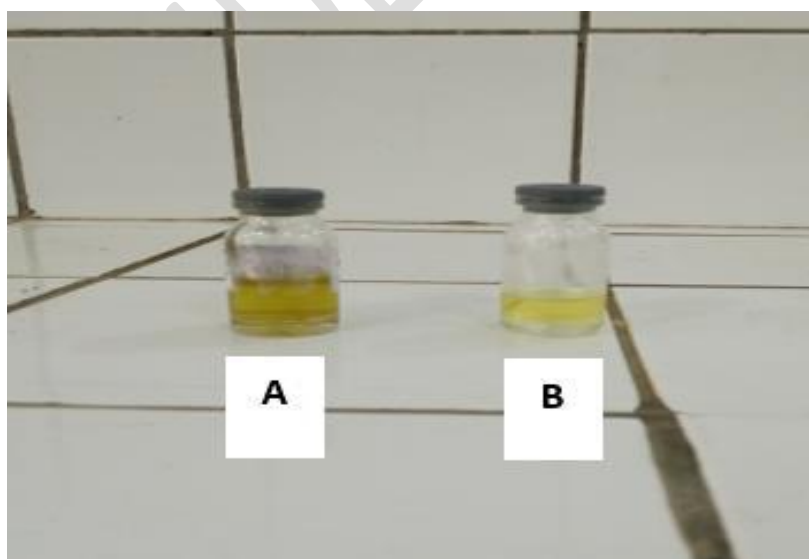


Figure 6: Extracted EOs of *E. globulus* (A) and *C. longa* (B).

3.2. Mycelial growth

3.2.1. Strain of *L. theobromae*

The mycelial growth of *L. theobromae* strains on PDA added to *C. longa* EO is revealed in Figure 7 [below](#). The values in the graph do not take into account the initial diameter of the mycelial explant (5 mm)

UNDER PEER REVIEW

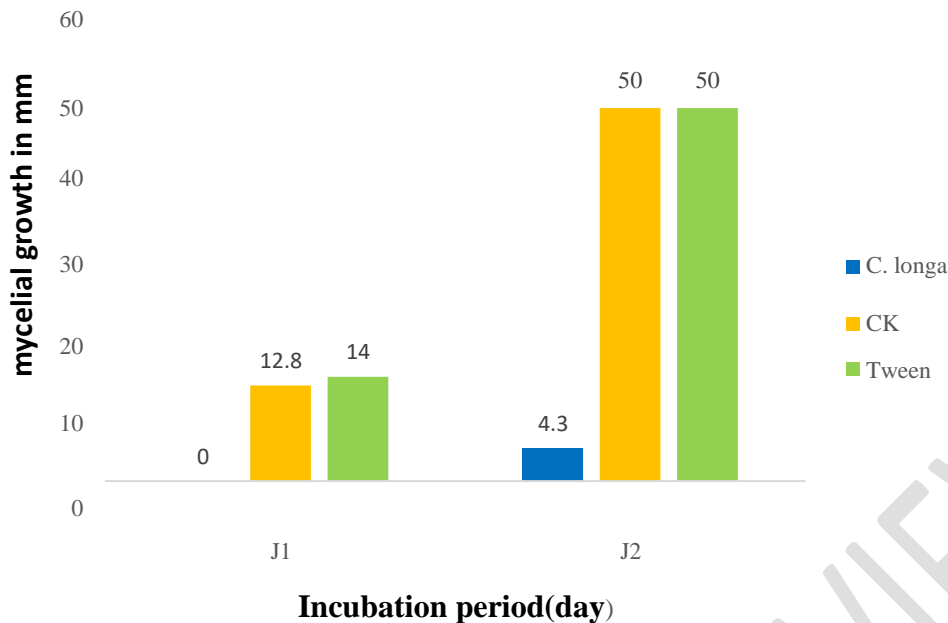


Figure 7: Mycelial growth of *L. theobromae* strain on the EO of *C. longa*. Please clarify the meaning of J1, J2, and CK.

It appears from this figure that with 5 mm of the seeded mycelial explantant, after 24 hours of incubation there is no growth while that of the control and tween 80 increased by 12.8 and 14 mm in diameter, respectively. In addition, on the second day a mycelial growth of 4.3 mm in diameter on the EO was constant, while that of control and tween 80 increased further up to 50 mm in diameter.

In terms of Percentage of Inhibition (PI), on the first day of incubation, we observed an PI of 100% was observed, and while after 48 hours it was equal to 91.4%.

Sibatu (32) achieved 11.5 mm growth of this strain with *Ageratum conizoides* EO and 0 mm with *Cymbopogon citratus*. The difference could be explained by the plants used.

The mycelial growth of strain of *L. theobromae* on PDA added EO of *E. globulus* is illustrated by in Figure 8.

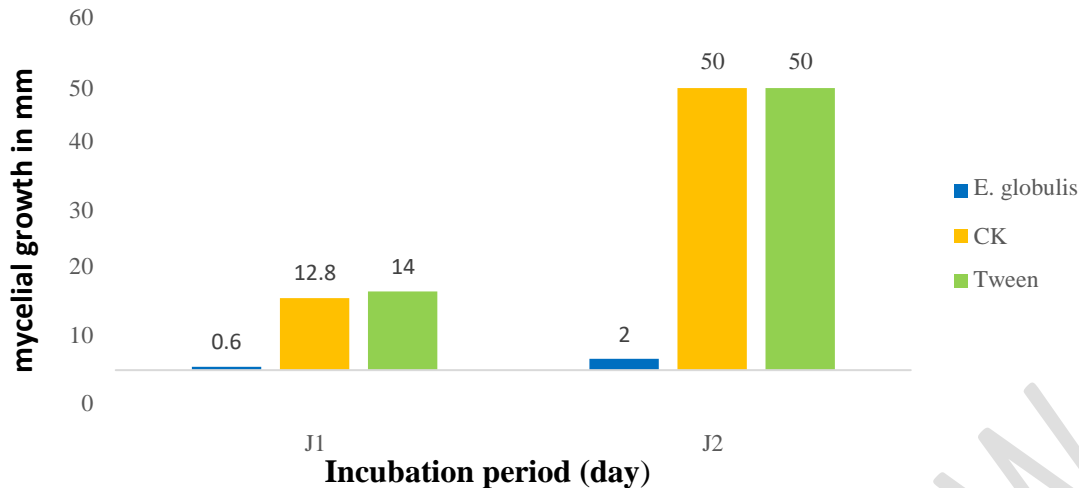


Figure 8: Mycelial growth of the strain of *L. theobromae* on the EO of *E. globulus*.

It emerges from this figure that. As shown in Figure 8, with 5 mm of the seeded mycelial explantant, the result shows revealed that after 24 hours of incubation, the mycelial growth of the strain on the EO increased by 0.6 mm while that of control and tween 80 increased by 12.8 and 14 mm in diameter, respectively. In addition, the result of the second day shows a growth on the HE of 2 mm in diameter while that of the control and tween 80 reached the maximum of 50 mm in diameter. **The same result of 50 mm in diameter in the 2 figures!??**

After 24 hours of incubation, we observed an PI of 98.8% was observed, and 48 hours later, there was a slight decrease in PI of 96%.

Anass and Rachid (33) had obtained an antibacterial activity of 10 mm with the *E. globulus* EO. The difference in strains used could explain this difference in inhibition.

Figure 9 illustrates the behaviour behavior of the *L. theobromae* strain towards EO, control, and tween 80.

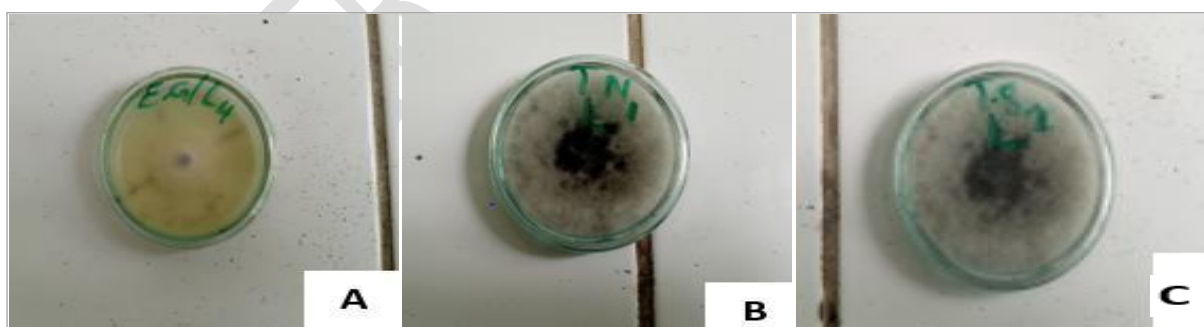


Figure 9: Mycelial growth of the strain of *L. theobromae*, the behavior of the strain with the EO (A), negative control (B) and control with tween 80 (C).

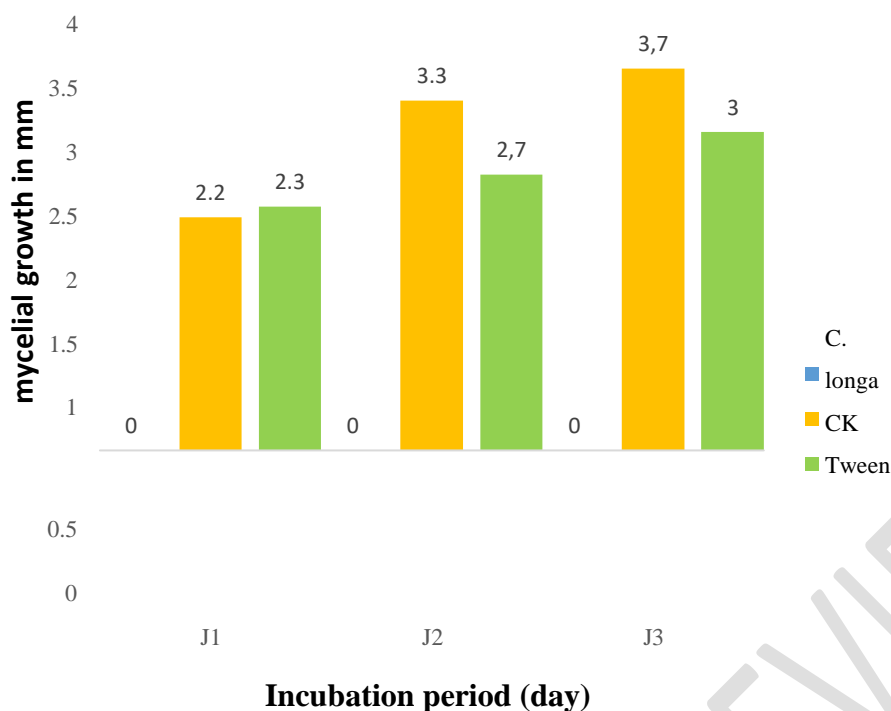


Figure 10: Mycelial growth of *P. fijiensis* strain on *C. longa* EO.

The results of this figure show that during three days of incubation there was no mycelial growth of the strain on the EO or 0 mm, moreover the mycelial growth on the control and tween 80 increased by 2.2 and 2.3 mm after 24 h; 3.3 and 2.6 mm after 48 hours of incubation, [add a comma] respectively. [add a full stop] 2.2 and 2.3 mm after 24 h; 3.3 and 2.6 mm after 48 hours of incubation and. Finally, it increased by 3.6 and 3 mm in diameter after 48 hours of incubation.

The PI during the first, second, and third days of incubation is maximum, i.e., 100%.

These results are similar to those obtained reported by Mukendi (34) with two plants (*Zingiber officinale* and *Tephrosia vogelii*) or 0 mm of mycelial growth of the strain of *P.fijiensis*.

Ludmila and Amira (35) had obtained an antimicrobial activity of 7 mm with *C.longa* EO. The difference in inhibition can be explained by the nature of the strain used.

Figure 11 illustrates the mycelial growth of *P. fijiensis* strain on PDA added *E. globulus*. EO

The PI during the first, second, and third days of incubation is maximum, i.e., 100%. [A repeated sentence, the same is underlined above in blue color].

These results are similar to those obtained by Mukendi (34) with two plants (*Zingiber officinale* and *Tephrosia vogelii*) or 0 mm of mycelial growth of the strain of *P.fijiensis*.

Ludmila and Amira (35) had obtained an antimicrobial activity of 7 mm with *C.longa* EO. The difference in inhibition can be explained by the nature of the strain used.

Figure 11 illustrates the mycelial growth of *P. fijiensis* strain on PDA added *E. globulus*. EO [A repeated sentence, the same is underlined above in blue color].

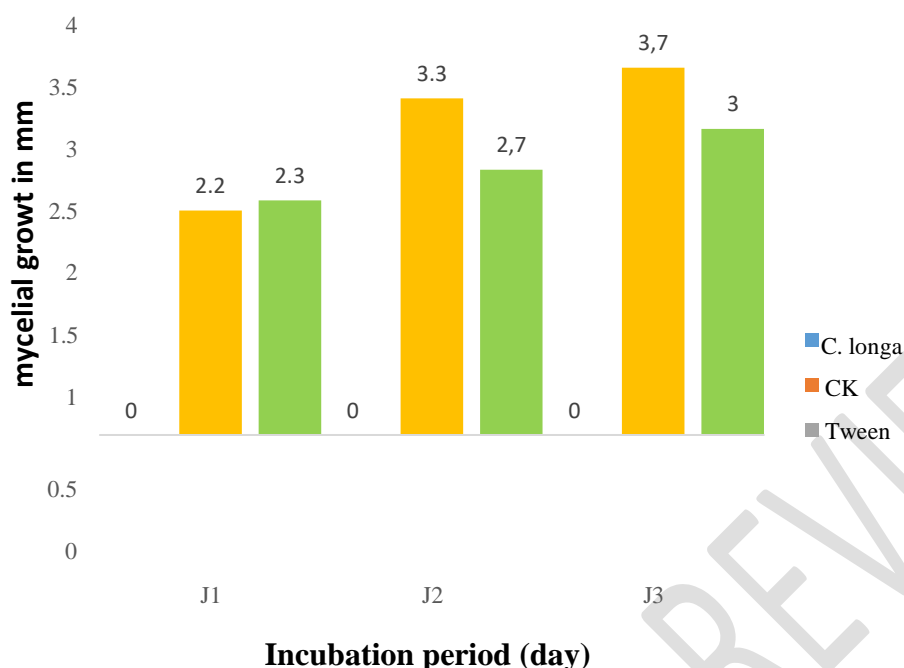


Figure 11: Mycelial growth of *P. fijiensis* strain on *E. globulus*. EO

It emerges from this figure that during three days of incubation, there was no mycelial growth of the strain on the EO or 0 mm. In addition, on the control and tween 80, there was a mycelial growth of 2.2 and 2.3 mm, respectively, after 24 h of incubation and 3.3 and 2.6 [it is 2.7 at the figure, please check] mm after 48 h, and finally 3.6 [it is 3.7 at the figure, please check] and 3 mm of incubation diameter after 72 h.

Samoussa *et al.* (36) had obtained have reported that, with the *E. globulus* EO an inhibition diameter of 10 mm on staphylococcal strains, whereas for this study the PI was 100%. The explanation for this difference lies in the strains used.

4. CONCLUSION AND SUGGESTIONS

The present study focuses on the *in vitro* evaluation of the antifungal activity of EO of two medicinal plants including *C. longa* and *E. globulus* on strains of *L. theobromae* and *P. fijiensis* in the Kisangani region.

The essential oils were obtained after extraction by the method of hydrodistillation. The isolation of strains of *L. theobromae* was made from mesocarp fragments taken from the diseased cocoa while the strains of *P. fijiensis* were obtained by the method of discharging ascospores on agar medium (H₂O Agar) and transplanting on PDA. [all this information is mentioned in M&M section, please delete]. The method of inhibition of mycelial growth on a petri dish in a solid medium (PDA) made it possible to evaluate the sensitivity of the strains against the essential oils of the medicinal plants studied.

The main results achieved are as follows:

- The EOs of the rhizomes of *C. longa* and the leaves of *E. globulus* showed a low EO yield of

0.50% and 0.48%.

- The EOs of the rhizomes of *C. longa* and the leaves of *E. globulus* showed inhibitory actions on the mycelial growth of the strains of *L. theobromae* and *P. fijiensis*
- The PI of *C. longa* EO on the *L. theobromae* strain was 100% and 91.4%, while that of *E. globulus* was 98.8% and 96% after 24 and 48 hours of incubation, respectively. For the strain of *P. fijiensis*, the PI of 100% was obtained for the essential oils of the plants used.
- The ANOVA test [This test didn't mention in M&M] applied to the mean mycelial growth values of these two fungal strains on the HE ?? abbreviation for what? of *C. longa* showed that the difference is not significant (p-value = 0.47). In addition, there is also no significant difference (p-value = 0.51) between the mean mycelial growth values of these two fungal strains on the EO of *E. globulus*.

Given the growing interest of EO, further research in this direction should be encouraged, particularly with other medicinal plants and also by diversifying extraction methods.

COMPETING INTERESTS DISCLAIMER:

Authors have declared that no competing interests exist. The products used for this research are commonly and predominantly use products in our area of research and country. There is absolutely no conflict of interest between the authors and producers of the products because we do not intend to use these products as an avenue for any litigation but for the advancement of knowledge. Also, the research was not funded by the producing company rather it was funded by personal efforts of the authors.

REFERENCES

1. Naouel O.; 2015. Chemical and biological study of essential oils of Coriander, Fennel, and Parsley, doctoral thesis, Faculty of Exact and Applied Sciences, University of Oran1, 198 p.
2. Gouudji M.B., Ladjel S., Salaheddine B. and Zighmi S.; 2015: chemical composition, antibacterial and antioxidant activities of the essential oil exacted from the Menta piperta of south Algeria, 12 p.
3. Carlier, J.; De Waele, D. and Escalant, J.V., 2003: Global assessment of the resistance of banana plants to Fusarium wilt, leaf diseases caused by *Mycosphaerella* spp. and nematodes. Performance evaluation (A. Vézina and C. Picq, eds). INBAP Technical Guides 7. International Plantain Improvement Network, Montpellier, France, 62 p.
4. Churchill, A.C.L, 2011: *Mycosphaerella fijiensis*, the black leaf streak pathogen of banana: progress towards understanding pathogen biology and detection, disease development, and the challenges of control, *Molecular Plant Pathology*, 328 p.
5. Dhed'a D., Adheka J., Onautshu D. and Swennen, R., 2019: Banana and plantain cultivation in the agroecological zones of the Democratic Republic of Congo, UNIKIS University Press, Kisangani, 72 p.
6. Lass, J.; 1985: Phytophthora pod rot often called black pod in: Cocoa GRAAR Wood, RA lass, Eds. Loengman London United Kingdom, 267-282
7. Nyakabwa, M.; 1982: Phytocenosis of the urban ecosystem of Kisangani. Doctoral thesis, Unikis, Fac. Sciences, Volume 1, 481 p.

8. Etobo, K.; 2012: Study of the antibacterial activity of extracts of some medicinal plants on bacterial strains resistant to common antibiotics in Kisangani. Thesis, Faculty of Sciences, University of Kisangani, 141 p.
9. Mate, M., J.P.; 2001: Phytomass and mineralomass of hedgerows of improving legumes in alley crops in Kisangani (Democratic Republic of Congo), Thesis, Faculty of Sciences, Free University of Brussels, 235 p.
10. Kahindo, M.; 2011: Potential for forest products other than timber in the forest formations of the Kisangani region: the case of *Rattans Eremospatha haullevileana* DE Wild and *Laccosperma secundiflorum* (P. BEAUV.) KUNTZE) of the Yoko forest reserve (Orientale Province , DR CONGO), Thesis, Faculty of Sciences, Unikis, 269 p.
11. Debuigne, G. 2009: Petit Larousse of medicinal plants. Larousse, Paris, 383 p.
12. Jayaprakasha, G.K., Jagan Mohan Rao, L., and Sakariah, K.K.; 2005: Chemistry and biological activities of *C. longa*. Trends in Food Science & Technology, 16(12), 533-548
13. Bouaicha, N., and Timechbache, H.; 2020: Evaluation of the antibacterial activity of *Curcuma longa* marketed in the Wilaya of Biskra, Memory, Faculty of Sciences Exact and Natural and Life Sciences, Mohamed Khider University of Biskra, 45 p.
14. Vaquier, A., R., L.; 2010: Interest of a new anti-inflammatory nutrient in the management of locomotor disorders in horses. Bibliographic aspects and clinical study, National Veterinary School of Alfort, France, 187 p.
15. Jourdan, J.P.; 2015: Turmeric and curcumin: From history to therapeutic interests, 141 p.
16. Orliac, C.; 2002: The God rao of Mangareva and turmeric *longa*. Journal of the Society of Oceanists 114-115
17. Gbenou, J., D.; 1999: Essential oils of some aromatic plants of the genera *Eucalyptus* and *Melaleuca* (Myrtaceae) and *Chenopodium* (Chenopodiaceae) from Benin: inter- and intra-specific variations in yield and chemical composition and pharmacodynamic properties, Thesis, Faculty of Science and Technology, University National of Benin, 331 p.
18. Koziol, N.; 2015: Essential oils of *Eucalyptus globulus*, *Eucalyptus radiata* and *Corymbia citriodora*: quality, efficacy and toxicity, Thesis, Faculty of Pharmacy, University of Lorraine, 117 p.
19. Soumahoro, B., A.; 2016: Chemical characterization of essential oils extracted from cell suspensions from savannah tea calluses (*Lippia multiflora* Moldenke, Verbenaceae) grown in Côte d'Ivoire, Thesis, Faculty of Natural Sciences, Nagui Abrogoua University, 149 p.
20. Bruneton, J. 1999; Pharmacognosy, Phytochemistry, Medicinal Plants, (3rd ed.)” Lavoisier Techniques & Documentation. Paris, 369-388.
21. French Association for Standardization (AFNOR), 1986; “Essential Oils”, AFNOR, Paris. NF T 75-006
22. Onautshu., 2007: Study of the incidence of diseases and pests in banana trees (*Musa spp.*) in the Kisangani region (R.D.Congo), D.E.A., Faculty of Sciences, UNIKIS, 54 p.
23. Burt S., 2004: Essential oil their antibacterial properties and potential applications in foods-a review. International Journal of Foods and Microbiology. 94: 223-253
24. Tidjinil, A., and Taibi, A.; 2014: Study of the antibacterial activity of essential oils of *Curcuma longa* on beef contaminated with *E. coli* 0157.-h7, Memory, Faculty of Science ences of Life and Nature and Sciences of the Earth and the Universe, Abou Bekr Belkaid-Tlemcen University, 78 p.
25. Gounder D.K. and Lingamallu J.; 2012: Comparison of chemical composition and antioxidant potential of volatile oil from fresh dried and cured turmeric (*Curcuma longa*) rhizomes. Industrial Crops and Products. Flight. 38: 124–131.

26. Aicha, Y., and Khadidja, G. ;2020: Antimicrobial effect of essential oils of *Curcuma longa* L. on some human pathogens, Memory, Faculty of Nature and Life Sciences, Abdelhamid Ibn Badis-Mostaganem University, 80 p.
27. Soraya, S., and Houda, B.; 2017: Correlation between the polyphenolic content and the in vitro antioxidant and antimicrobial activity of *Curcuma longa* L., Memory, Faculty of Nature and Life Sciences, University of the Mentouri Constantine Brothers, 75 p.
28. Pereira S., Freire S.R.C.; Neto P., Silvestre J.D., and Silva M.S.A.; 2005: Chemical composition of the essential oil distilled from the fruits of *Eucalyptus globulus* grown in Portugal, Flavor and fragrance journal flavor fragr. J. 2005; 20: 407–409
29. Raho B, Ghalem M and Benali M (2008). Antibacterial activity of leaf essential oils of *Eucalyptus globulus* and *Eucalyptus camaldulensis*. African Journal of Pharmacy and Pharmacology Vol. 2(10), ISSN 1996-0816 © 2008 Academic Journals. 211-215
30. Naziha, M., and Rahma, C.; 2019: Antimicrobial activity of essential oils of "Eucalyptus globulus": Phytochemical study, Memory, Faculty of Nature and Life Sciences, University of Blida-1, 49 p
31. Zakia, B., O., S; 2014: Biological activities of essential oils from the leaves and fruit of a medicinal plant *Eucalyptus globulus*, Memory, Faculty of Nature and Life Sciences, Abderrahmane Mira University – Bejaïa, 64 p.
32. Sibatu, 2020: In vitro evaluation of the antifungal activity of essential oils on strains of *Lasioidiplodia theobromae* in the Kisangani region (DR. Congo), TFC, Faculty of Sciences, UNIKIS, 29 p.
33. Anass, K. and Rachid S.; 2018: Sensitivity study to essential oils of *Cinnamomum verum*, *Eucalyptus globulus*, *Glycyrrhiza glabra*, as well as Antibiotics of certain germs from collective catering, University of Nassn II of Casalanca, vol. 14, 590-595.
34. Mukendi, J.; 2011: Biocidal efficacy of two plant extracts with biocidal action (*Tephrosia vogelii* and *zingiber officinale*) on the in vitro growth of *mycosphaerella fijiensis*, the causative agent of banana black leaf streak disease, Memory, Faculty of Agronomy, UNIKIN, 48 p.
35. Ludmila, K., and Amira, A.; 2020: Phytochemical characterization and antibacterial activity of *Curcuma longa*, Memory, Faculty of Nature and Life Sciences and Earth Sciences, Akli Mohand Oulhadj – Bouira University, 48 p.
36. Samoussa, M., O., Abdellaoui, A., Kettani, A., Saile, R., and Bennani, R.; 2018: Study of the Sensitivity to Essential Oils of *Cinnamomum Verum*, *Eucalyptus Globulus*, and *Glycyrrhiza Glabra* L as well as to antibiotics of certain germs from collective catering, European Scientific Journal.