

GxE interactions elucidated by AMMI, BLUP and Non Parametric measures of Wheat genotypes by evaluated in NEPZ

Abstract

Highly significant effects of environments, GxE interactions and genotypes showed by AMMI analysis with respective contributions 53.2% ,24.9% , 3.5% towards total sum of squares. Interaction Principal Components axes (IPCA) values recommended the general adaptations of the genotype. IPCA-1 scores pointed for G4, G2, G7 while IPCA-2 selected G10, G3, G9 genotypes. Both ASV & ASV1 utilized 46.2% of interaction sum of squares recommended G4, G1, G12 wheat genotypes. Based on 97.8% of interactions sum of squares MASV1 measures identified G7, G3, G5 whereas MASV measure settled for G7, G3, G9. BLUP-based measures HMGV, RPGV and HMRPGV identified G2, G8, G1 genotypes. Non parametric composite measures viz $NP_i^{(1)}$ observed suitability of G2, G5, G7 whereas $NP_i^{(2)}$ for G10, G7, G9 while $NP_i^{(3)}$ identified G10, G9, G7 genotypes of choice. $NP_i^{(4)}$ found suitability of G10, G7, G9 genotypes. Biplot analysis of considered measures had seen about 65.4% of the total variation explained by first two significant Principal Components. $NP_i^{(2)}$, $NP_i^{(3)}$, $NP_i^{(4)}$ formed a cluster adjacent to cluster of ASV, ASV1, MASV, MASV1, S_i^7 BLStd, BLCV measures. Small cluster of IPC4, IPC3 placed near to cluster of BLUP based measures. ASV and ASV1 showed moderate to strong positive correlations values while MASV and MASV1 showed moderate strong positive correlation values with S_i^1 , S_i^2 , S_i^3 , S_i^4 , S_i^5 , S_i^6 , S_i^7 , $NP_i^{(1)}$, $NP_i^{(2)}$, $NP_i^{(3)}$, $NP_i^{(4)}$ measures.

Keywords: AMMI, BLUP, Non parametric composite measures, Biplot analysis

Introduction

The bad effects of climate change on wheat production can be mitigated by varieties adapted to vagaries of weather fluctuations complemented by appropriate farming practices. The recommendation of wheat genotypes possessing high yield with stable performance posed a great concern to breeder especially for north eastern plains zone of India where the usage of natural resources and improved technologies has been reported on lower side. Wheat breeder focused more on the development of stable high-yielding varieties particularly to a target environment over the years instead of across environments owing to different varieties in varying climatic conditions (George & Lundy, 2019; Bocianowski *et al.*, 2021). Multi location trials have been conducted to have an estimate of variance due to the genotype-by-environment (GxE interaction) effect, as this component assist significantly in the identification of stable genotypes. Literature has been advocated to use of recent approaches in analyzing the stable performance of promising genotypes (Pour-Aboughadareh *et al.*, 2022). Additive main effects and multiplicative interaction (AMMI) has gained much popularity in latest studies as compared to joint regression analysis (Pour-Aboughadareh *et al.*, 2019). Number of AMMI based measures AMMI stability value (ASV, ASV1, MASV & MASV1) has also gained visibility i measures exploiting all significant IPCA's (Sousa *et al.*, 2020). Best linear unbiased prediction (BLUP) based measures, harmonic mean of genotypic values (HMGV), relative performance of genotypic values (RPGV), and harmonic mean of relative performance of genotypic values (HMRPGV), were also highlighted for the stability and adaptability of genotypes (Gonçalves *et al.*, 2020). Besides that number of nonparametric measures S_i^1 , S_i^2 , S_i^3 , S_i^4 , S_i^5 , S_i^6 , S_i^7 along with $NP_i^{(1)}$, $NP_i^{(2)}$, $NP_i^{(3)}$, $NP_i^{(4)}$ have been also utilized to interpret the response of genotypes to environmental conditions (Pour-Aboughadareh *et al.*, 2019). Recent analytic measures have been compared to decipher the

GxE interactions effects for wheat genotypes evaluated in north eastern plains zone of the country under restricted irrigation sown conditions.

Materials and Methods

Fourteen promising wheat genotypes were evaluated in research field trials at 14 centers of All India Coordinated Research Project on Wheat across this zone of the country during 2020-21 cropping season in field trials for restricted irrigation conditions. More emphasis had been placed to increase the wheat production of this zone to augment the total cereal production of the country. Field trials were laid out in Randomized block designs with four replications. Recommended practices of packages had followed in total to harvest the good yield. Parentage details and environmental conditions were reflected in table 1 for ready reference. Pour-Aboughadareh *et al.*, 2019 recommended various non parametric and parametric measures for assessing GxE interaction and stability analysis. For a two-way dataset with k genotypes and n environments X_{ij} denotes the phenotypic value of ith genotype in jth environment where $i=1,2, \dots, k, j=1,2, \dots, n$ and r_{ij} as the rank of the ith genotype in the jth environment, and \bar{r}_i as the mean rank across all environments for the ith genotype. The correction for yield of ith genotype in jth environment as $(X_{ij}^* = X_{ij} - \bar{x}_{i.} + \bar{x}_{..})$ as X_{ij}^* , was the corrected phenotypic value; $\bar{X}_{i.}$ was the mean of ith genotype in all environments and $\bar{X}_{..}$ was the grand mean.

$$S_i^{(1)} = \frac{2 \sum_{j=1}^{n-1} \sum_{j'=j+1}^n |r_{ij} - r_{ij'}|}{[n(n-1)]}$$

$$S_i^{(7)} = \frac{\sum_{j=1}^n (r_{ij} - \bar{r}_i)^2}{\sum_{j=1}^n |r_{ij} - \bar{r}_i|}$$

$$S_i^{(3)} = \frac{\sum_{j=1}^n (r_{ij} - \bar{r}_i)^2}{\bar{r}_i}$$

$$S_i^{(4)} = \sqrt{\frac{\sum_{j=1}^n (r_{ij} - \bar{r}_i)^2}{n}}$$

$$S_i^{(5)} = \frac{\sum_{j=1}^n |r_{ij} - \bar{r}_i|}{n}$$

$$S_i^{(6)} = \frac{\sum_{j=1}^n |r_{ij} - \bar{r}_i|}{\bar{r}_i}$$

$$S_i^{(2)} = \frac{\sum_{j=1}^n (r_{ij} - \bar{r}_i)^2}{(n-1)}$$

$$\bar{r}_i = \frac{1}{n} \sum_{j=1}^n r_{ij}$$

Non parametric composite measures $NP_i^{(1)}$, $NP_i^{(2)}$, $NP_i^{(3)}$ and $NP_i^{(4)}$ based on the ranks of genotypes as per yield and corrected yield of genotypes. In the formulas, r_{ij}^* was the rank of X_{ij}^* , and \bar{r}_i and M_{di} were the mean and median ranks for original (unadjusted) grain yield, where \bar{r}_i^* and M_{di}^* were the same parameters computed from the corrected (adjusted) data.

$$NP_i^{(1)} = \frac{1}{n} \sum_{j=1}^n |r_{ij}^* - M_{di}^*|$$

$$NP_i^{(3)} = \frac{\sqrt{\sum (r_{ij}^* - \bar{r}_i^*)^2 / n}}{\bar{r}_i}$$

$$NP_i^{(2)} = \frac{1}{n} \left(\frac{\sum_{j=1}^n |r_{ij}^* - M_{di}^*|}{M_{di}^*} \right)$$

$$NP_i^{(4)} = \frac{2}{n(n-1)} \left[\sum_{j=1}^{n-1} \sum_{j'=j+1}^n \frac{|r_{ij}^* - r_{ij'}^*|}{\bar{r}_i} \right]$$

ASV

$$ASV = \left[\left(\frac{SSIPC}{2} \right) (PCI)^2 + (PC2)^2 \right]^{1/2}$$

ASV1

$$ASV1 = \left[\left(\frac{SSIPC}{2} \right) (PCI)^2 + (PC2)^2 \right]^{1/2}$$

Modified AMMI stability

Value

$$MASV = \sqrt{\sum_{n=1}^{N-1} \frac{SSIPC_n}{SSIPC_{n+1}} (PC_n)^2 + (PC_{n+1})^2}$$

MASV1

$$MASV1 = \sqrt{\sum_{n=1}^{N-1} \left(\frac{SSIPC_n}{SSIPC_{n+1}} PC_n \right)^2 + (PC_{n+1})^2}$$

HMGV_i

$$= \text{Number of environments} / \sum_{j=1}^k \frac{1}{GV_{ij}}$$

GV_{ij} genetic value of i th genotype in j th environments

Relative performance of
genotypic values across
environments

$$RPGV_{ij} = \sum GV_{ij} / \sum GV_j$$

Harmonic mean of Relative
performance of genotypic
values

$$HMRPGV_i = \text{Number of environments} / \sum_{j=1}^k \frac{1}{RPGV_{ij}}$$

Geometric Adaptability Index

$$GAI = \sqrt[n]{\prod_{k=1}^n \bar{X}_k}$$

AMMISOFT version 1.0 software utilized for AMMI analysis of data sets and SAS software version 9.3 for further analysis

Results and Discussion

AMMI analysis

Highly significant variations due to environments, G×E interactions, and genotypes were observed by AMMI analysis (Table 2). This analysis also revealed about 53.2% of the total sum square of variation for yield was due to environments followed by G×E interactions, 24.9% whereas genotypes accounted only 3.5%. Diversity of the testing sites were approved by AMMI analysis (Mehraban *et al.*, 2019). Seven Interaction principal components accounted for more than 92.9% interactions sum of square variations. AMMI1 explained a total variation of 27.3%, followed by 18.9% for AMMI2, 15.3% for AMMI3, 10.4% for AMMI4, AMMI5 contributed 10.1% followed by 7.2% and 3.7% by AMMI6, AMMI7 respectively. The first two AMMI components in total showed 46.2% of the total variation indicating the two AMMI components well fit and confirm the use of AMMI model (Pour-Aboughadareh *et al.*, 2022). Estimated sums of squares for G×E signal and noise were 83.46% and 16.54% of total G×E. Early IPCs selectively capture signal, and late ones noise. Accordingly, this much signal suggests AMMI6 or maybe AMMI7. Note that the sum of squares for GE-signal is 5.97 times that for genotypes main effects. Hence, narrow adaptations are important for this dataset (Vaezi *et al.* 2018). Even just IPC1 alone is 1.95 times the genotypes main effects. Also note that GE-noise is 1.18 times the genotypes effects.

Discarding noise improves accuracy, increases repeatability, simplifies conclusions, and accelerates progress.

Ranking of genotypes as per measures

Since the genotypes yield expressed highly significant variations, mean yield was considered as an important measure to assess the yield potential of genotypes. Mean yield of genotypes selected G3, G2, G1 with lowest yield of G10 (Table 3). This measure is simple, but not fully exploiting all information contained in the dataset. Values of IPCA's in the AMMI analysis indicate stability or adaptability of genotypes. The, greater the IPCA scores reflect the specific adaptation of genotype to certain locations. While, the values approximate to zero were recommended for in general adaptations of the genotype. Absolute IPCA-1 scores pointed for G4, G2, G7 as per IPCA-2, G10, G3, G9 genotypes would be of choice. Values of IPCA-3 favored G7, G11, G2 genotypes. As per IPCA-4, G1, G5, G3 genotypes would be of stable performance. Genotypes G2, G14, G5 selected as per IPCA5 while values of IPCA6 pointed for G7, G9, G1 and finally IPCA7 observed suitability of G3, G8, G12. First two IPCAs in ASV & ASV1 measures utilized 46.2% of G×E interaction sum of squares. The two IPCAs have different values and meanings and the ASV and ASV1 parameters using the Pythagoras theorem and to get estimated values between IPCA1 and IPCA2 scores to produce a balanced measure between the two IPCA scores. Also, ASV parameter of this investigation used advantages of cross validation due to computation from first two IPCAs (Silva *et al.*, 2019). Using first two IPCAs in stability analysis could benefits dynamic concept of stability in identification of the stable high yielder genotypes. ASV1 measures recommended (G4, G1, G12) and ASV pointed towards (G4, G1, G12) as of stable performance. Adaptability measures MASV and MASV1 considered all seven significant IPCAs of the AMMI analysis using 97.8% of G×E interactions sum of squares (Gerrano *et al.*, 2020). Values of MASV1 identified G7, G3, G5 genotypes would express stable yield whereas genotypes G7, G3, G9 be of stable yield performance by MASV measure respectively. Major advantages of BLUP based measures are to account for the random nature of the genotype behaviour in changes climatic conditions. At the same time allow ranking genotypes in relation to their performance based on the genetic effects (Sousa *et al.*, 2020). Average yield of genotypes pointed towards, G3, G2, G1 as high yielders. More over the values of BLGM favored G3, G2, G1. Consistent yield of G7, G1, G10 as per least values of standard deviation more over the values of CV identified G7, G1, G10, genotypes for the consistent yield performance for NEPZ zone of the country. The BLUP-based simultaneous selections, such as HMGV identified G2, G1, G8, while values of RPGV favored G2, G8, G1 and HMRPGV settled for G2, G8, G1 genotypes. The evaluation of adaptability and stability of wheat genotypes through these BLUP-based indices was reported by Pour-Aboughadareh *et al.*, 2019. The estimates of HMGV, RPGV, and HMRPGV had the same genotype ranking that was reported Anuradha *et al.*, 2022.

Non parametric measures

These measures consider the ranks of genotypes as per their corrected yield across environments S_i^1 values pointed for G7, G2, G5 while S_i^2 selected G7, G2, G4 and values of S_i^3 favoured G7, G4, G6 as desirable genotypes (Table 4). G7, G2, G6 selected by values of S_i^4 & measure S_i^5 pointed towards G 2, G7, G8 while S_i^6 observed suitability of G5, G7, G4 and lastly S_i^7 values identified G7, G6, G4 genotypes (Table 4). The mentioned strategy

determines the stability of genotype over environment if its rank is similar over other environments (biological concept). Nonparametric measures of phenotypic stability were associated with the biological concept of stability (Vaezi *et al.*, 2018). Non parametric composite measures $NP_i^{(1)}$ to $NP_i^{(4)}$, consider the ranks of genotypes as per their yield and corrected yield across environments simultaneously. $NP_i^{(1)}$ measure observed suitability of G2, G5, G7 whereas as per $NP_i^{(2)}$, genotypes G10, G7, G9 would be of choice while $NP_i^{(3)}$ identified G10, G9, G7. Last composite measure $NP_i^{(4)}$ found G10, G7, G9 as genotypes of choice for this zone.

Biplot analysis

The first two significant PC's has explained about 65.4% of the total variation in the AMMI, BLUP and non parametric measures considered for this study (Table 5) with respective contributions of 35.4% & 29.9% by first and second principal components respectively (Ahakpaz *et al.*, 2021). Measures S_i^1 , S_i^2 , S_i^4 , S_i^3 , $NP_i^{(1)}$, S_i^6 , ASV, ASV1, IPC7 accounted more of share in PC1 whereas RPGV, HMRPGV, HMGV, BLAvg, BLGM, $NP_i^{(4)}$ contributed more in PC2. The association analysis among measures had been explored with the biplot analysis. In the biplot vectors of measures expressed acute angles would be positively correlated whereas those achieved obtuse or straight line angles would be negatively correlated. Independent type of relationships had expressed by right angles between vectors. Very tight positive relationships observed between with ASV, ASV1, MASV, MASV1, S_i^7 , BLStd, BLCV. Measure $NP_i^{(2)}$, $NP_i^{(3)}$, $NP_i^{(4)}$ expressed moderate degree of positive relationship with IPC1, and mean yield Measures and maintained positive relationship with IPC5, IPC2, IPC6. BLUP based measures RPGV, HMGV and HMRPGV expressed positive association IPC4, IPC3. Set of measures S_i^1 to S_i^7 clubbed with $NP_i^{(1)}$ expressed no relationship with BLUP based measures (Fig. 1). Measures $NP_i^{(2)}$, $NP_i^{(3)}$, $NP_i^{(4)}$ formed a cluster adjacent to cluster of ASV, ASV1, MASV, MASV1, S_i^7 , BLStd, BLCV measures as observed in same quadrant of biplot analysis. Small cluster of IPC4, IPC3 placed near to cluster of BLUP based measures. These two were placed in separate quadrant. Measures S_i^1 to S_i^6 clustered along with $NP_i^{(1)}$ exhibited close proximity with last cluster of IPC5, IPC2, IPC6 measures (Fig. 2).

Association analysis

Average yield had expressed direct and indirect relationships with measures (Table 6). Notably positive with IPC2, IPC5, IPC7, BLAvg, BLGM, HMGV, RPGV, HMRPGV, $NP_i^{(1)}$ and negative with $NP_i^{(2)}$, $NP_i^{(3)}$, $NP_i^{(4)}$. AMMI based measures ASV & ASV1 showed moderate to strong positive correlations with measures (Anuradha *et al.*, 2022). Measures considered all significant IPC's showed moderate strong positive correlation values (S_i^1 , S_i^2 , S_i^3 , S_i^4 , S_i^5 , S_i^6 , S_i^7 , $NP_i^{(1)}$, $NP_i^{(2)}$, $NP_i^{(3)}$, $NP_i^{(4)}$) along with few very weak negative values also. BLUP based measures expressed weak relation with other measures whereas strong to moderate negative correlations with non parametric measures ($NP_i^{(2)}$, $NP_i^{(3)}$, $NP_i^{(4)}$). S_i^s exhibited only moderate to strong positive values with other measures with only weak negative values with IPC4 (Pour-Aboughadareh *et al.*, 2022). Lastly composite non parametric measures expressed both type of relationships with other measures. Mostly positive values expressed by $NP_i^{(1)}$ contrasting to few of negative values by $NP_i^{(2)}$, $NP_i^{(3)}$, $NP_i^{(4)}$.

References

- Aharpaz F., Abdi H., Neyestani E., Hesami A., Mohammadi B., Nader Mahmoudi K., Abedi-Asl G., Jazayeri Noshabadi M.R., Aharpaz F., Alipour H. (2021). Genotype-by-environment interaction analysis for grain yield of barley genotypes under dry land conditions and the role of monthly rainfall. *Agric Water Manag* 245:10665
- Anuradha N., Patro T.S.S.K., Singamsetti A., Sandhya Rani Y., Triveni U., Nirmala Kumari A., Govanakoppa N., Lakshmi Pathy T. and Tonapi V.A. (2022). Comparative Study of AMMI- and BLUP-Based Simultaneous Selection for Grain Yield and Stability of Finger Millet [*Eleusine coracana* (L.) Gaertn.] Genotypes. *Front. Plant Sci.* 12:786839. doi: 10.3389/fpls.2021.786839
- Bocianowski J., Tratwal A., Nowosad K. (2021). Genotype by environment interaction for main winter triticale varieties characteristics at two levels of technology using additive main effects and multiplicative interaction model. *Euphytica* 217:26
- George N., Lundy M. (2019). Quantifying genotype x Environment effects in long-term common wheat yield trials from an agroecologically diverse production region. *Crop Science* 59:1960–1972
- Gerrano A.S., Rensburg W.S.J.V., Mathew I., Shayanowako A.I.T., Bairu M.W., Venter S.L., Swart W., Mofokeng A., Mellem J., Labuschagne M. (2020). Genotype and genotype x environment interaction effects on the grain yield performance of cowpea genotypes in dry land farming system in South Africa. *Euphytica* 216:80
- Gonçalves G. de M. C., Gomes R. L. F., Lopes Â. C. de A. and Vieira P. Fe. de M. J. (2020). Adaptability and yield stability of soybean genotypes by REML/BLUP and GGE Biplot. *Crop Breeding and Applied Biotechnology*, 20(2): e282920217.
- Pour-Aboughadareh, A., Ali B., Ali K. S., Mehdi J., Akbar M., Ahmad G., Kamal S.H., Hassan Z., Poodineh Omid and Masoome, K. (2022). Dissection of genotype-by-environment interaction and yield stability analysis in barley using AMMI model and stability statistics. *Bulletin of the National Research Centre* 46:19
- Pour-Aboughadareh, A., Yousefian M., Moradkhani H., Pocza P., and Siddique K.H. (2019). STABILITYSOFT: A new online program to calculate parametric and non-parametric stability statistics for crop traits. *Applications in Plant Sciences* 7(1): e1211
- Mehraban R. A., Hossein-Pour T., Koohkan E., Ghasemi S., Moradkhani H., Siddique K.H. (2019). Integrating different stability models to investigate genotype × environment interactions and identify stable and high-yielding barley genotypes. *Euphytica* 215:63
- Silva E. M. da, Nunes E. W. L. P., Costa J. M. da, Ricarte A. de O., Nunes G. H. de S. and Aragão Fernando Antonio Souza de. (2019). Genotype x environment interaction, adaptability and stability of ‘Piel de Sapo’ melon hybrids through mixed models *Crop Breeding and Applied Biotechnology*, 19(4): 402-411.
- Sousa, A.M.C.B., Silva V.B., Lopes A.C.A., Ferreira-Gomes R.L. and Carvalho L.C.B. (2020). Prediction of grain yield, adaptability, and stability in landrace varieties of lima bean (*Phaseolus lunatus* L.) *Crop Breeding and Applied Biotechnology*, 20: e295120115
- Vaezi, B., A. Pour-Aboughadareh, A. Mehraban, T. Hossein-Pour, Mohammadi R. Armion, M. and Dorri, M. (2018). The use of parametric and non- parametric measures for

selecting stable and adapted barley lines. Archives of Agronomy and Soil Science, 64: 597–611

UNDER PEER REVIEW

Table 1: Parentage and location details under multi environmental trials of wheat genotypes

| Genotype | Code | Parentage | Code | Locations | Latitude | Longitude | Altitude |
|----------|------|---|------|-------------|-----------|-----------|----------|
| H11653 | G 1 | NADI/COPIO//NADI | E 1 | Kanpur | 26° 26' N | 80° 19' E | 126 |
| DBW322 | G 2 | CIMMYT165/PBW585 | E 2 | Prayagraj | | | |
| H11612 | G 3 | KAUZ//ALTAR84/AOS/3/MILAN/KAUZ/4/HUITES | E 3 | Araul | 26° 54' N | 80° 01' E | 139 |
| DBW252 | G 4 | PFAU/MILAN/5/CHEN/AE.SQ(TAUS)//BCN/3/VEE#7/BOW/4/PASTOR | E 4 | Ghaghrahat | 26° 54' N | 81° 56' E | 100 |
| DBW321 | G 5 | DBW39/DL7882 | E 5 | Ayodhya | | | |
| HD3368 | G 6 | HD2932/HD3086 | E 6 | Varanasi | 25° 19' N | 82° 59' E | 81 |
| H11654 | G 7 | NADI/COPIO//NADI | E 7 | Sabour | 25° 23' N | 87° 04' E | 46 |
| HD3293 | G 8 | HD2967/DBW46 | E 8 | RPCAU-Pusa | 25° 98' N | 25° 67' E | 52 |
| WH1281 | G 9 | TACUPETOF2001/BRAMLING/5/NAC/TH.AC//3*PVN/3/MIRLO | E 9 | Kalyani | 22° 58' N | 88° 26' E | 11 |
| PBW848 | G 10 | CROC_1AE.SQ(224)//OPATA/3/PASTOR/4/2*SOKOLL/3/PASTOR//HXL7573/2*BAU | E 10 | Burdwan | 23° 13' N | 87° 51' E | 30 |
| HD3171 | G 11 | PBW343/HD2879 | E 11 | Manikchak | | | |
| HD3369 | G 12 | HD3070/HD3078 | E 12 | Ranchi | 23° 20' N | 85° 18' E | 644 |
| K1317 | G 13 | K0307/K9162 | E 13 | Chianki | 24° 01' N | 84° 10' E | 241 |
| UP3062 | G 14 | QLD28/PBW621 | E 14 | Shillongani | 26° 8' N | 91° 43' E | 86 |

Table 2: AMMI analysis of wheat genotypes evaluated in fourteen environments

| Source | Degree of freedom | Mean Sum of Squares | Significance level | % contribution of factors | GxE interaction Sum of Squares (%) | Cumulative Sum of Squares (%) by IPCA's |
|-----------------|-------------------|---------------------|--------------------|---------------------------|------------------------------------|---|
| Treatments | 195 | 169.80471 | *** | 81.64 | | |
| Genotype (G) | 13 | 108.59454 | *** | 3.48 | | |
| Environment (E) | 13 | 1661.11543 | *** | 53.24 | | |
| GxE interaction | 169 | 59.79698 | *** | 24.92 | | |
| IPC1 | 25 | 110.20486 | *** | | 27.26 | 27.26 |
| IPC2 | 23 | 83.20295 | *** | | 18.94 | 46.20 |
| IPC3 | 21 | 73.48065 | *** | | 15.27 | 61.47 |
| IPC4 | 19 | 55.33978 | *** | | 10.40 | 71.87 |
| IPC5 | 17 | 60.41301 | *** | | 10.16 | 82.04 |
| IPC6 | 15 | 48.3638 | *** | | 7.18 | 89.22 |
| IPC7 | 13 | 28.95611 | *** | | 3.72 | 92.94 |
| Residual | 36 | 19.81786 | *** | | | |
| Error | 588 | 12.66188 | | | | |
| Total | 783 | 51.79707 | | | | |

Table 3: AMMI along with BLUP based measures of yield for wheat genotypes

| Code | Mean | IPC1 | IPC2 | IPC3 | IPC4 | IPC5 | IPC6 | IPC7 | MASV1 | MASV | ASV1 | ASV | BLAvg | BLStdev | BLCV | BLGM | BLHM |
|------|-------|--------|--------|--------|--------|--------|--------|--------|-------|------|------|------|-------|---------|-------|-------|-------|
| G 1 | 35.69 | 0.691 | -2.628 | 1.825 | -0.046 | 0.228 | 0.307 | -0.349 | 5.45 | 5.01 | 2.81 | 2.76 | 35.59 | 5.38 | 15.12 | 35.21 | 34.83 |
| G 2 | 36.01 | 0.051 | -0.859 | 0.066 | -0.375 | -0.040 | -2.053 | 0.275 | 4.70 | 4.68 | 0.86 | 0.86 | 35.87 | 5.65 | 15.87 | 35.42 | 34.93 |
| G 3 | 36.19 | 1.630 | 0.530 | 0.795 | -0.105 | -0.626 | -0.644 | -0.020 | 3.37 | 2.99 | 2.41 | 2.03 | 35.96 | 7.04 | 19.79 | 35.28 | 34.55 |
| G 4 | 35.59 | 0.016 | 0.765 | -0.830 | 2.510 | 0.408 | 0.572 | 1.525 | 4.51 | 4.44 | 0.77 | 0.77 | 35.34 | 6.67 | 18.75 | 34.72 | 34.08 |
| G 5 | 35.22 | 1.674 | -0.156 | -1.811 | 0.084 | -0.213 | -0.399 | 0.611 | 4.18 | 3.66 | 2.42 | 2.01 | 35.29 | 6.73 | 18.92 | 34.69 | 34.09 |
| G 6 | 35.33 | -1.023 | 0.856 | 1.439 | 0.684 | -0.962 | 1.878 | -0.262 | 5.56 | 5.30 | 1.70 | 1.50 | 35.08 | 6.48 | 18.21 | 34.49 | 33.87 |
| G 7 | 34.21 | 0.061 | -1.554 | 0.015 | 0.571 | 0.868 | 0.024 | 0.443 | 3.04 | 2.84 | 1.56 | 1.56 | 34.36 | 4.29 | 12.04 | 34.10 | 33.83 |
| G 8 | 35.68 | 0.824 | -1.138 | -1.138 | -0.691 | -2.427 | 0.809 | -0.086 | 5.52 | 5.03 | 1.64 | 1.51 | 35.71 | 5.69 | 16.00 | 35.28 | 34.83 |
| G 9 | 32.74 | -1.316 | 0.579 | -0.872 | -1.498 | 1.548 | -0.032 | 0.409 | 4.31 | 3.94 | 1.98 | 1.68 | 33.01 | 5.59 | 15.71 | 32.53 | 32.01 |
| G 10 | 31.37 | -0.930 | 0.004 | 0.153 | -2.098 | 0.768 | 1.268 | 0.828 | 4.53 | 4.44 | 1.34 | 1.12 | 31.88 | 5.51 | 15.49 | 31.42 | 30.96 |
| G 11 | 33.97 | -0.594 | 2.328 | 0.064 | -0.709 | -1.430 | -0.854 | -0.171 | 5.01 | 4.70 | 2.48 | 2.43 | 34.00 | 7.88 | 22.15 | 33.06 | 32.06 |
| G 12 | 34.35 | -0.542 | 0.884 | 2.269 | 0.549 | 0.313 | -1.070 | 0.143 | 5.01 | 4.60 | 1.18 | 1.10 | 34.21 | 6.85 | 19.24 | 33.54 | 32.85 |
| G 13 | 35.66 | 2.484 | 1.263 | -0.512 | 0.115 | 1.631 | 0.634 | -1.789 | 5.55 | 4.96 | 3.79 | 3.24 | 35.44 | 7.56 | 21.25 | 34.58 | 33.61 |
| G 14 | 33.65 | -3.026 | -0.874 | -1.463 | 1.010 | -0.065 | -0.439 | -1.558 | 5.75 | 5.05 | 4.44 | 3.73 | 33.94 | 5.88 | 16.53 | 33.48 | 33.05 |

Table 4: Non parametric measures of yield for wheat genotypes

| Code | S ₁ ¹ | S ₂ ¹ | S ₃ ¹ | S ₄ ¹ | S ₅ ¹ | S ₆ ¹ | S ₇ ¹ | NP ₁ ⁽¹⁾ | NP ₁ ⁽²⁾ | NP ₁ ⁽³⁾ | NP ₁ ⁽⁴⁾ | PRVG | MHPRVG |
|------|-----------------------------|-----------------------------|-----------------------------|-----------------------------|-----------------------------|-----------------------------|-----------------------------|--------------------------------|--------------------------------|--------------------------------|--------------------------------|-------|--------|
| G 1 | 5.341 | 21.143 | 2.902 | 4.598 | 3.898 | 7.490 | 5.037 | 4.000 | 0.644 | 1.022 | 0.859 | 1.033 | 1.022 |
| G 2 | 4.264 | 13.670 | 1.914 | 3.697 | 2.898 | 5.680 | 4.380 | 3.077 | 0.538 | 0.739 | 0.746 | 1.036 | 1.031 |
| G 3 | 4.714 | 16.374 | 1.976 | 4.046 | 3.388 | 5.724 | 4.488 | 3.538 | 0.576 | 0.736 | 0.767 | 1.032 | 1.027 |
| G 4 | 4.527 | 14.995 | 1.891 | 3.872 | 3.214 | 5.676 | 4.332 | 3.462 | 0.510 | 0.596 | 0.667 | 1.016 | 1.011 |
| G 5 | 4.516 | 17.302 | 2.144 | 4.160 | 3.194 | 5.540 | 5.030 | 3.154 | 0.417 | 0.489 | 0.597 | 1.015 | 1.010 |
| G 6 | 4.462 | 14.995 | 1.891 | 3.872 | 3.224 | 5.694 | 4.318 | 3.308 | 0.482 | 0.553 | 0.651 | 1.009 | 1.003 |
| G 7 | 4.176 | 13.192 | 1.759 | 3.632 | 3.000 | 5.600 | 4.083 | 3.154 | 0.374 | 0.404 | 0.495 | 0.997 | 0.993 |
| G 8 | 4.714 | 17.478 | 2.376 | 4.181 | 3.163 | 6.019 | 5.131 | 3.308 | 0.520 | 0.597 | 0.742 | 1.035 | 1.024 |

| | | | | | | | | | | | | | |
|------|-------|--------|-------|-------|-------|-------|-------|-------|-------|-------|-------|-------|-------|
| G 9 | 4.725 | 16.264 | 2.148 | 4.033 | 3.286 | 6.075 | 4.596 | 3.538 | 0.390 | 0.403 | 0.521 | 0.953 | 0.945 |
| G 10 | 4.835 | 18.225 | 2.630 | 4.269 | 3.776 | 7.629 | 4.482 | 3.769 | 0.354 | 0.371 | 0.454 | 0.921 | 0.913 |
| G 11 | 5.000 | 19.451 | 2.670 | 4.410 | 3.796 | 7.294 | 4.758 | 4.000 | 0.505 | 0.519 | 0.631 | 0.971 | 0.958 |
| G 12 | 4.626 | 16.132 | 2.353 | 4.016 | 3.306 | 6.750 | 4.531 | 3.538 | 0.472 | 0.446 | 0.617 | 0.982 | 0.975 |
| G 13 | 5.396 | 21.962 | 2.928 | 4.686 | 4.143 | 7.733 | 4.922 | 4.231 | 0.604 | 0.852 | 0.771 | 1.017 | 1.001 |
| G 14 | 5.319 | 21.324 | 2.898 | 4.618 | 4.071 | 7.748 | 4.863 | 4.385 | 0.520 | 0.543 | 0.631 | 0.983 | 0.971 |

Table 5: Loadings of AMMI, BLUP and non parametric measures

| Measure | PC1 | PC2 | Measure | PC1 | PC2 |
|---------|--------|--------|--------------|--------|--------|
| Mean | 0.001 | -0.330 | BLHM | 0.039 | -0.321 |
| IPC1 | -0.005 | -0.203 | PRVG | 0.004 | -0.332 |
| IPC2 | -0.022 | 0.089 | MHPRVG | 0.035 | -0.330 |
| IPC3 | 0.009 | -0.036 | S_i^1 | -0.299 | 0.029 |
| IPC4 | 0.023 | -0.154 | S_i^2 | -0.299 | 0.032 |
| IPC5 | -0.004 | 0.121 | S_i^3 | -0.286 | 0.073 |
| IPC6 | -0.032 | 0.060 | S_i^4 | -0.297 | 0.035 |
| IPC7 | 0.243 | 0.048 | S_i^5 | -0.285 | 0.087 |
| MASV1 | -0.212 | -0.028 | S_i^6 | -0.261 | 0.132 |
| MASV | -0.174 | -0.021 | S_i^7 | -0.217 | -0.067 |
| ASV1 | -0.254 | -0.002 | $NP_i^{(1)}$ | -0.280 | 0.088 |
| ASV | -0.259 | -0.013 | $NP_i^{(2)}$ | -0.181 | -0.245 |
| BLAvg | 0.000 | -0.332 | $NP_i^{(3)}$ | -0.153 | -0.245 |
| BLStdev | -0.125 | -0.053 | $NP_i^{(4)}$ | -0.134 | -0.284 |
| BLCV | -0.125 | -0.053 | | | |
| BLGM | 0.019 | -0.331 | 65.36 | 35.48 | 29.87 |

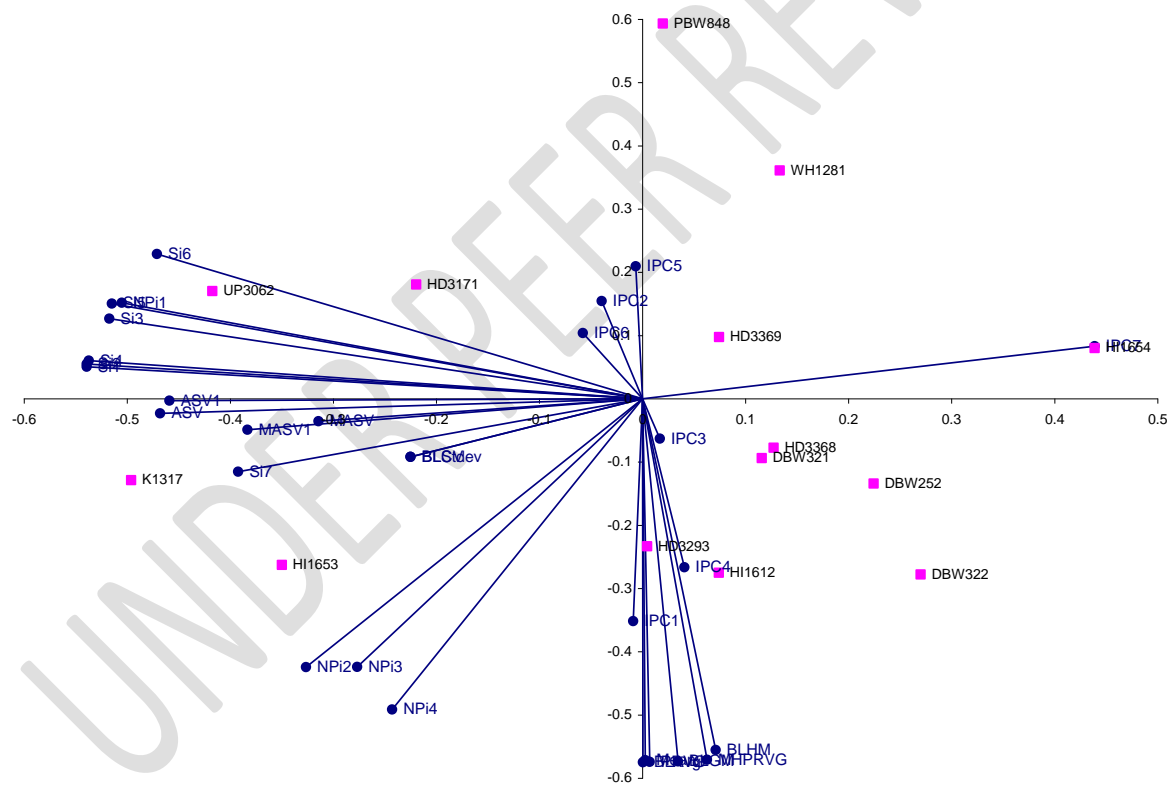


Figure 1: Biplot analysis of AMMI, BLUP and non parametric measures

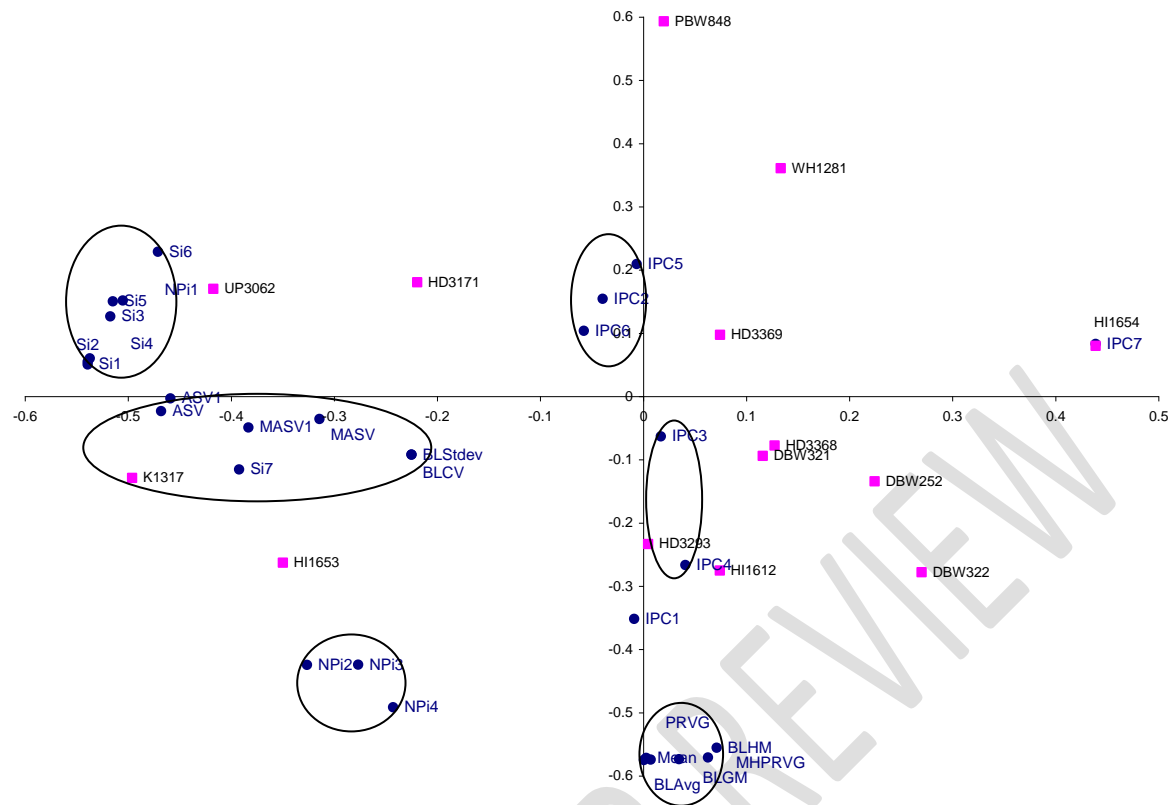


Figure 2: Clustering pattern of AMMI, BLUP and non parametric measures

[illegible]

0.987 0.973
0.973