

**Genetic Stability of TGMS Hybrids in Dry Direct Seeded Rice**

**ABSTRACT**

Rice is a water-loving crop and traditionally sown in the nursery and then transplanted to the puddled and waterlogged main field. Owing to climate change, water scarcity and labour shortage problems, rice is now cultivated in the dry direct seeded method. In order to break the yield plateau in rice cultivation, Thermosensitive Genetic Male Sterile (TGMS) hybrids were found to be very effective. In the present study, 41 TGMS hybrids and 9 checks were evaluated for their stability and adaptability by dry direct seeded method in four locations viz., E<sub>1</sub> - Allahabad, E<sub>2</sub> - Lucknow, E<sub>3</sub> - Dhamtari and E<sub>4</sub> - Raipur. The TGMS hybrid G44 was predicted as an ideal hybrid by the GGE stability model that possessed high grain yield and stable performance over environments. It was followed by hybrids viz., G10, G14, G34, G11, G20 and G47 that had a stable performance with high yield. Hence, these TGMS hybrids were identified as high and stable yielders across environments and suitable for dry direct seeded rice ecosystems. Among the environments, E<sub>1</sub> (Allahabad) and E<sub>4</sub> (Raipur) were considered favourable environments as they possessed the highest discriminating power.

**Keywords:** Rice hybrids, TGMS, Dry direct seeded, Stability

**1. INTRODUCTION**

Rice (*Oryza sativa* L.) is the most vital and staple food crop for half of the world's population. Rice is a water-loving plant is grown in various agro-climatic zones and seasons

in India. Although rice production has significantly increased from 34.5 million tonnes in 1960-61 to 117.5 million tonnes in 2020-21 in India [1], this significant increase over years was achieved by the introduction of semi-dwarf varieties, through improved crop management, adoption of hybrids and improved plant protection practices. Rice production needed to be increased by 42% by 2050 to feed the demands of an ever-increasing human population globally. Due to the potential of hybrid rice in increasing both rice production and productivity, many countries are focusing on exploiting the benefits of this technology. Although the two-line hybrid breeding system was developed relatively late, it provides essential advantages over the three-line system. Manonmani *et al.* [2] concluded that the Thermosensitive Genetic Male Sterile (TGMS) lines will reduce the cost of seed production apart from increasing the heterosis. TGMS lines with stable sterility can be exploited commercially for the development of two-line rice hybrids in India.

The soaring climate change en routes water scarcity and thereby restricting crop productivity [3]. Traditionally, rice is sown in the nursery and then transplanted to the puddled main field. This conventional method is cumbersome as it requires an intense water supply and is highly laborious [4]. Hence, it triggered to identify a tailor-made cultivation practice that increases the water use efficiency and less labour. Dry Direct Seeded Rice (DDRS) is an innovative technique in which dry seeds are sown in a seedbed and irrigated later [5]. This practice helps in efficient utilization of water, labour, time, helps better growth of succeeding crops and reduces the emission of greenhouse gases [6].

Apart from biotic & abiotic stresses, the lack of custom-made genotypes to specific growing environments is the reason for a steady decline in the area, production and productivity in rice [7]. The cultivars/genotypes interact differently with different environments. Hence, the prime concern is to evaluate the rice cultivars for adaptation and stability over various environmental conditions [8]. To identify the superior cultivar for a

target region, plant breeders conduct Multiple-Environment Trials (MET) to determine if the target region can be subdivided into different mega environments [9]. The genotype-environment interaction makes targeting of cultivars to specific locations difficult since yield is less predictable and cannot be interpreted only based on genotype and environment means [10]. Therefore, breeders must use tools to measure the response of these lines efficiently and accurately in multiple test environments [11]. A new technique in the GEI analysis called Genetics, Genetics  $\times$  Environment (GGE) biplot [12] to identify the stable genotypes over environments. GGE biplot pools the effect of genotype with genotype-environment interactions and submit it to principal components to form a biplot. The use of biplot to quantify the genotype-environment interaction is widespread since the genotype-environment effects can be visualized in a single graph, which facilitates the comparison of genotypes and their interaction with the environments [13]. Hence, to tackle the growing demand for rice production and water scarcity, the present study aimed to evaluate 41 TGMS hybrids and 9 Cytoplasmic Male Sterile (CMS) based check rice hybrids over different locations to test their stability and adaptability in dry direct seeded conditions.

## **2. MATERIALS AND METHODS**

The materials entailed 41 TGMS based hybrids and nine checks (CMS hybrids). The 41 TGMS hybrids were derived from three Corteva female lines and 36 male parents. The details of the hybrids and parents are given in Table 1. Trials were conducted at four locations *viz.*, E<sub>1</sub> - Allahabad (Uttar Pradesh), E<sub>2</sub> - Lucknow (Uttar Pradesh), E<sub>3</sub> - Dhamtari (Chhattisgarh) and E<sub>4</sub> - Raipur (Chhattisgarh) across two states of India. The experiment was conducted in Randomized Block Design (RBD) with two replications in each location. Two seeds per hill were sown at the spacing of 20  $\times$  15 cm in four rows with a plot size of 2.4 m<sup>2</sup> per hybrid. After the initial establishment of the crop, a single seedling per hill was maintained. A necessary package of practices was followed to raise a healthy crop. Each

hybrid was harvested at the R9 stage [14] and observations on grain yield/plot were recorded and it was converted to kg/ha. The statistical analysis was done using the R package “metan” [15].

### 3. RESULTS AND DISCUSSION

In the present study, 41 selected hybrids along with nine checks were evaluated in four locations to test its phenotypic stability for the yield. The analysis of variance showed a highly significant difference for a plot yield in all the individual environments (Table 2). It indicated the differential performance of hybrids in different environments. Similarly, the pooled analysis of variance showed significant differences for the traits studied (Table 3). Hence, all the hybrids showed differential performance over different environments. Similar results were observed by Pujar *et al.* [16] in rice.

The GGE biplot technique breaks the complex genotype  $\times$  environment interactions (GEI) into simplified PCs and data are presented graphically against the various PCs. The genotypic view of the GGE biplot bifurcates the hybrids and checks into two groups namely, better performing group and lesser performing groups based on the perpendicular axes (Fig.1). The 22 hybrids viz., G44, G10, G9, G50, G14, G33, G25, G5, G12, G34, G35, G11, G20, G3, G24, G37, G2, G38, G40, G4, G30, G23 and were placed on the left side of the perpendicular axis and they were predicted to be the low yielders. All the other hybrids and checks which are placed on the right side of the perpendicular axis were considered as the high yielders. The hybrid, G44 was prognosticated to be the ideal hybrid in the present study as it was placed near the centre of Average Environment Axes (AEA) and near the centre of concentric circles. Hence, the hybrid G44 was predicted as the highest yielder and highly stable hybrid in the present study. It was followed by the hybrids viz., G10, G9, G14, G50, G33, G25, G12, G34 and G5 that were proximal to the ideal hybrid on AEA. Hence, these

hybrids were also considered stable and high yielding. The vector length determines the stability of the hybrids. The hybrids *viz.*, G10, G14, G34, G11, G20, G47, G2, G4, G30, G1, G28, G7 and G22 had very short vector length and they were predicted as highly stable hybrids. The hybrid G27 was placed far away from the AEA and had a higher vector length. Hence, it was considered highly unstable hybrid. The concept of AEA was used to bifurcate the better and least performing genotypes that were well studied by Ebdon and Gauch [17] in turf grass.

The GGE biplot also predicts the ideal environment based on the concentric circles [13]. In the present study, environments E<sub>2</sub> (Lucknow) and E<sub>3</sub> (Dhamtari) were nearer to the concentric circle and it was predicted to be the ideal environment for all the hybrids. The concentric circles also serve as a ruler to measure the distance between an environment and the ideal environment [18]. The environments E<sub>1</sub> (Allahabad) and E<sub>4</sub> (Raipur) were located further from the ideal environment. Hence, variation between the hybrids was more in these environments and it will be favourable to selective hybrids. Similarly, environments with high and low hybrid interaction were reported by Rana *et al.* [19] in garden pea.

The which – won – where biplot predicts the hybrids suited for the particular environments (Fig. 2.). The polygon view of a GGE biplot is the best way to visualize the interaction between genotypes and environments [20] and it helps estimate the possible existence of different mega environments to show the presence or absence of cross over GE interaction which helps estimate the possible existence of different mega environments. The hybrids *viz.*, G7, G23, G50, G9, G44 and G27 were located far away from the origin and they were joined to form a polygon so that all other hybrids are contained in the polygon. Hence, these vertex hybrids were predicted to perform better in a favourable environment. It was in

accordance with Gauch *et al.* [21] in rice. Hybrids suitable for each environment and across environments are given in Table 4.

The perpendicular lines to the sides of the polygon divide the biplot into sectors. Each sector had a vertex hybrid that was highly responsive to the particular environment. In the present study, vertex hybrid G44 fell towards location  $E_1$  (Allahabad) and  $E_2$  (Lucknow) and it was predicted to perform better in the environment  $E_1$  and  $E_2$ . The vertex hybrids G9, G50 and G23 are located in the sector with environments  $E_3$  (Dhamtari) and  $E_4$  (Raipur). Hence, G9, G50 and G23 were best suited for the locations  $E_3$  and  $E_4$ . Similarly, the study on “what won where” biplots provided the possible existence of different mega environments in the target environment [22]. The performance of each hybrid over different environments is depicted in Fig. 3 as a response plot. Similarly, a response plot was utilized by Bose *et al.* [23] to depict the performance of genotypes in various environments in rice.

#### 4. CONCLUSION

In a nutshell, based on the stability of genotypes and high yielding nature, G44 was predicted as the ideal hybrid by the GGE stability model that possessed high grain yield and stable performance over environments. It was followed by hybrids *viz.*, G10, G14, G34, G11, G20 and G47 had a stable performance with a high yield based on its presence near AEA and shorter vector length. Hence, the TGMS hybrids identified in the study could be used in water and labour scarcity areas without compromising productivity. The Environments  $E_1$  (Allahabad) and  $E_4$  (Raipur) were found to be favourable environments for the selection of hybrids as it has the highest discriminating power. In the study, the GGE biplot provided higher discriminating power and a clear representation of the stability parameters. Hence, the GGE biplot stability model can be preferred over other stability models like AMMI and Eberhart and Russell models.

## COMPETING INTERESTS DISCLAIMER:

Authors have declared that no competing interests exist. The products used for this research are commonly and predominantly use products in our area of research and country. There is absolutely no conflict of interest between the authors and producers of the products because we do not intend to use these products as an avenue for any litigation but for the advancement of knowledge. Also, the research was not funded by the producing company rather it was funded by personal efforts of the authors.

## REFERENCES

1. Ministry of Agriculture, Government of India. 2020-21. <https://www.indiastat.com>.
2. Manonmani S, Pushpam R, Robin S. Stability of TGMS lines under different temperature regimes for pollen sterility. *J Rice Res*. 2016;9(1):17-9.
3. Kaur J, Singh A. Direct seeded rice: Prospects, problems/constraints and researchable issues in India. *Current agriculture research Journal*. 2017;5(1):13.
4. Shekhawat K, Rathore SS, Chauhan BS. Weed management in dry direct-seeded rice: A review on challenges and opportunities for sustainable rice production. *Agronomy*. 2020;10(9):1264.
5. Pandey S, Velasco LE. Economics of alternative rice establishment methods in Asia: a strategic analysis. *Social Sciences Division Discussion Paper*, International Rice Research Institute, Los Banos, Philippines. 1999;1(1):12-8.
6. Ishfaq M, Akbar N, Anjum SA, ANWAR-IJL-HAQ M. Growth, yield and water productivity of dry direct seeded rice and transplanted aromatic rice under different irrigation management regimes. *Journal of Integrative Agriculture*. 2020;19(11):2656-73.
7. Chandrashekhar S, Babu R, Jeyaprakash P, Umarani R, Bhuvaneshwari K, Manonmani S. Yield stability analysis in multi-environment trials of hybrid rice (*Oryza sativa* L.) in Northern India using GGE Biplot Analysis. *Electronic Journal of Plant Breeding*. 2020;11(02):665-73.

8. Das S, Misra RC, Patnaik MC, Das SR. GxE interaction, adaptability and yield stability of mid-early rice genotypes. Indian journal of agricultural research. 2010;44(2):104-11.
9. Crossa J, Cornelius PL, Yan W. Biplots of linear- bilinear models for studying crossover genotype× environment interaction. Crop Science. 2002;42(2):619-33.
10. Samonte SO, Wilson LT, McClung AM, Medley JC. Targeting cultivars onto rice growing environments using AMMI and SREG GGE biplot analyses. Crop science. 2005;45(6):2414-24.
11. Yan W, Hunt LA, Sheng Q, Szlavnics Z. Cultivar evaluation and mega- environment investigation based on the GGE biplot. Crop science. 2000;40(3):597-605.
12. Yan W, Kang MS, Ma B, Woods S, Cornelius PL. GGE biplot vs. AMMI analysis of genotype- by- environment data. Crop science. 2007;47(2):643-53.
13. Gauch Jr HG. Statistical analysis of yield trials by AMMI and GGE. Crop science. 2006;46(4):1488-500.
14. Olivoto T, Lúcio AD. metan: An R package for multi- environment trial analysis. Methods in Ecology and Evolution. 2020;11(6):783-9.
15. Moldenhauer KE, Slaton N. Rice growth and development. Rice production handbook. 2001;192:7-14.
16. Pujar M, Govindaraj M, Gangaprasad S, Kanatti A, Shivade H. Genetic variation and diversity for grain iron, zinc, protein and agronomic traits in advanced breeding lines of pearl millet [*Pennisetum glaucum* (L.) R. Br.] for biofortification breeding. Genetic Resources and Crop Evolution. 2020;67:2009-22.
17. Ebdon JS, Gauch Jr HG. Additive main effect and multiplicative interaction analysis of national turfgrass performance trials: I. Interpretation of genotype× environment interaction. Crop science. 2002;42(2):489-96.

18. Zewdu Z, Dessie A, Worede F, Atinaf M, Berie A, Tahir Z, Kinfe H, Bitew M. Agronomic Performance Evaluation and Yield Stability Analysis of Upland Rice (*Oryza sativa* L.) Varieties Using AMMI and GGE Biplot. Plant. 2020;8(4):87.
19. Rana C, Sharma A, Sharma KC, Mittal P, Sinha BN, Sharma VK, Chandel A, Thakur H, Kaila V, Sharma P, Rana V. Stability analysis of garden pea (*Pisum sativum* L.) genotypes under North Western Himalayas using joint regression analysis and GGE biplots. Genetic Resources and Crop Evolution. 2021;68(3):999-1010.
20. Yan W, Kang MS. GGE biplot analysis: A graphical tool for breeders, geneticists, and agronomists. CRC press; 2002.
21. Gauch HG, Zobel RW. AMMI analysis of yield trials. u: Kang MS, Gauch HG [ur.] Genotype by Environment Interactions. CRC Press, Boca Raton 1996: 85-122.
22. Bhartiya A, Aditya JP, Kumari V, Kishore N, Purwar JP, Agrawal A, Kant L. GGE biplot & ammi analysis of yield stability in multi-environment trial of soybean [*Glycine max* (L.) Merrill] genotypes under rainfed condition of north western Himalayan hills. Indian Journal of Genetics and Plant Breeding. 2017;27(1):227-38.
23. Bose LK, Jambhulkar NN, Singh ON. Additive main effects and multiplicative interaction (AMMI) analysis of grain yield stability in early duration rice. J. Anim. Plant Sci. 2014;24(6):1885-97.

**Table 1. List of 41 TGMS rice hybrids and nine checks used for the study.**

S. No.	Hybrid code	Parentage
1	G1	CortF1/IR78875207B2B
2	G2	CortF1/NANTH
3	G3	CortF1/IR80013B14141
4	G4	CortF2/IR79156G
5	G5	CortF1/WHITE PONNI
6	G6	CortF2/LEIGONGTSAN

7	G7	CortF2/IR77080B343
8	G8	CortF1/PAITAOTZU
9	G9	CortF2/WHITE PONNI
10	G10	CortF1/LEIGONGTSAN
11	G11	CortF2/DIANGLONG 201
12	G12	CortF2/HUNGMIHSUANTSAN
13	G13	<b>NK5251Plus*</b>
14	G14	CortF2/Pasak Jalan
15	G15	CortF2/IR73439-11-1-3
16	G16	CortF1/TAPOOCHO Z
17	G17	CortF1/IR78875207B1B
18	G18	CortF2/HUANITHOU
19	G19	CortF2/HUANGPITSAN
20	G20	CortF2/NANKING 14
21	G21	CortF2/4593
22	G22	CortF2/IR78937B4BBB
23	G23	CortF2/IR78875207B1B
24	G24	CortF1/IR72164405511
25	G25	CortF2/SOKONI
26	G26	CortF2/PAITAOTZU
27	G27	CortF1/Indica3
28	G28	<b>27P31*</b>
29	G29	CortF2/CHIU KU AI 2
30	G30	CortF2/LUNGPITSAN
31	G31	<b>PHB71*</b>
32	G32	<b>25P25*</b>
33	G33	CortF1/CHITOUHUANG 2
34	G34	CortF1/IR6551451219R
35	G35	CortF2/HUANGGUATSAO
36	G36	CortF1/IR79971B36B
37	G37	CortF2/CHUNGHSIANGMA
38	G38	<b>Arize TEJ GOLD*</b>
39	G39	<b>27P37*</b>
40	G40	CortF3/CHINA 97391
41	G41	CortF2/Xu Xu Zhan
42	G42	<b>27P22*</b>
43	G43	CortF1/IR79913B176B1
44	G44	CortF1/PATOUHUNG
45	G45	<b>US312*</b>
46	G46	CortF2/KAOMAKU
47	G47	CortF2/IR65483141413R
48	G48	<b>25P35*</b>
49	G49	CortF2/KUANGTANGAI
50	G50	CortF3/WHITE PONNI

\*Checks

**Table 2. Environment wise ANOVA for 50 rice hybrids in four locations**

<b>Environ</b>	<b>Mean Grain</b>	<b>Mean</b>						
<b>ments</b>	<b>yield (Kg/ha)</b>	<b>Df</b>	<b>Sum Sq</b>	<b>Sq</b>	<b>F value</b>	<b>Pr(&gt;F)</b>	<b>CV</b>	<b>h2</b>
E <sub>1</sub>	7223.44	49	4685823	32.49	0.00	1.00	5.25	0.96
E <sub>2</sub>	5646.82	49	3858514	45.89	0.00	1.00	5.13	0.97
E <sub>3</sub>	5577.69	49	1961365	65.69	0.00	1.00	3.09	0.98
E <sub>4</sub>	7492.38	49	4136947	33.39	0.00	1.00	4.69	0.97

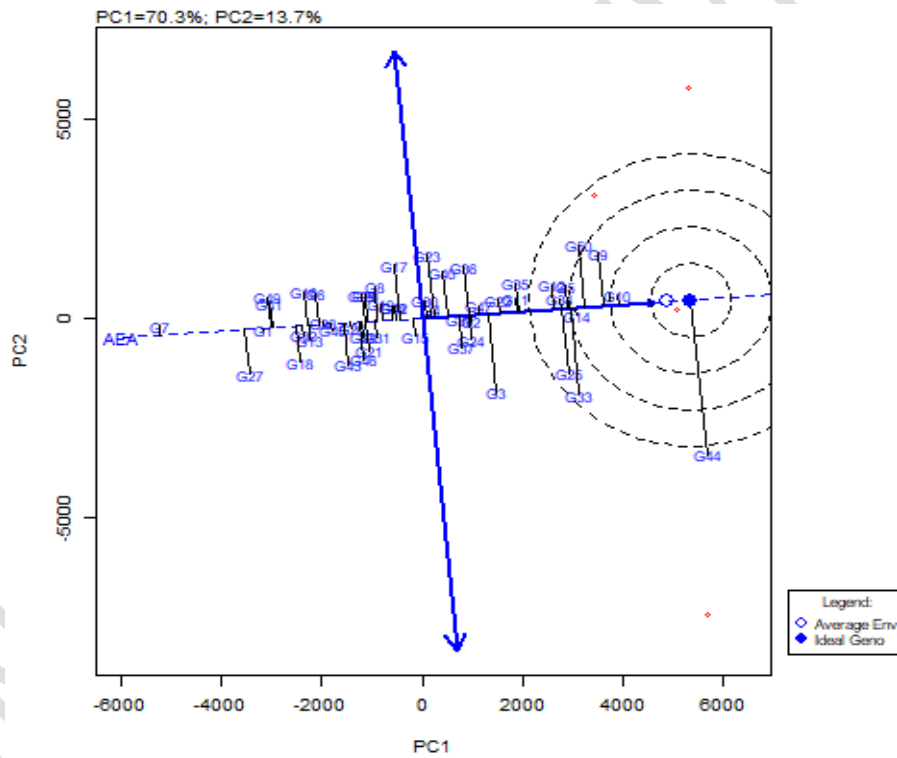
**Table 3. Pooled ANOVA for grain yield on 50 rice hybrids over different locations**

<b>Source</b>	<b>Df</b>	<b>Sum Sq</b>	<b>Mean Sq</b>	<b>F value</b>	<b>Pr(&gt;F)</b>
ENV	3	308586522	102862174	1077.00	0.00
REP(ENV)	4	529964	132491	1.00	0.23
GEN	49	490668471	10013642	105.00	0.00
GEN:ENV	147	226821311	1543002	16.00	0.00
Residuals	196	18718956	95505		
<b>CV(%)</b>	4.76	<b>MSR+/MSR-</b>	4.82	<b>Overall mean</b>	6485.08 kg/ha

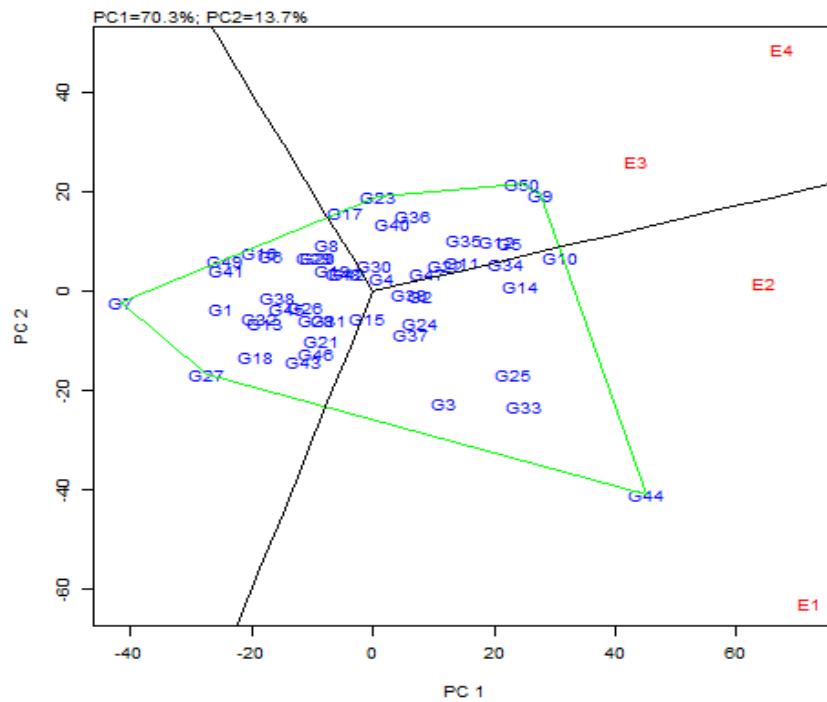
**Table 4. Best performing hybrids in each and across locations based on GGE biplot.**

<b>S. No.</b>	<b>Environments</b>	<b>GGE</b>
---------------	---------------------	------------

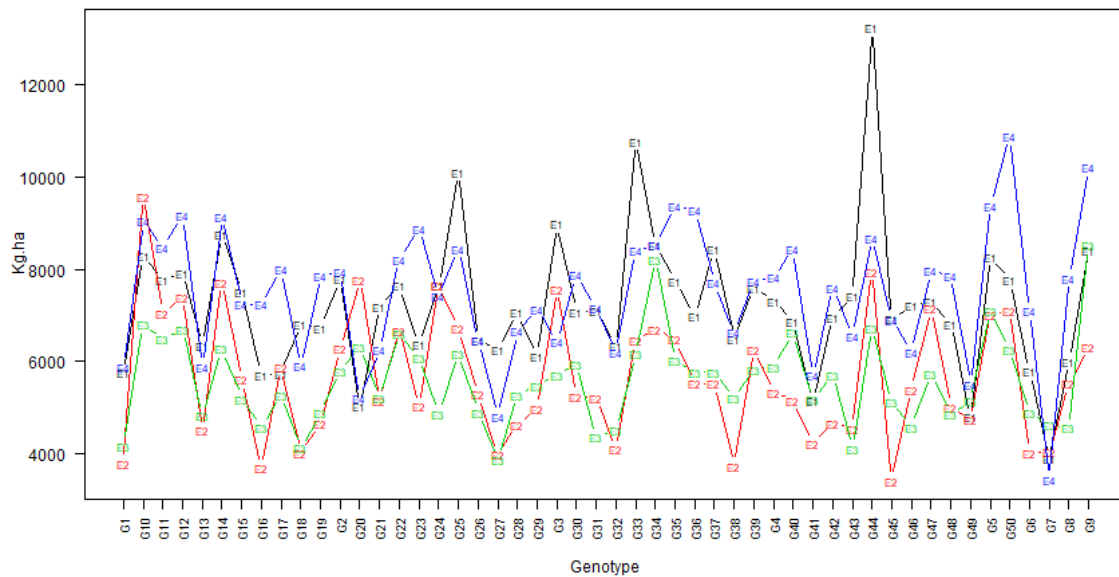
1	E <sub>1</sub> - Allahabad	G44, G33, G25 and G3
2	E <sub>2</sub> - Lucknow	G10, G14 and G34
3	E <sub>3</sub> - Dhamtari	G9, G50, G5, G12 and G35
4	E <sub>4</sub> - Raipur	G9 and G50
5	Across environments	G44, G10, G14, G34 and G11



**Fig. 1. Genotypic view in GGE biplot for plot yield of 50 TGMS based rice hybrids**



**Fig. 2. What won where biplot for grain yield of 50 rice hybrids**



**Fig. 3. Response plot of 50 rice hybrids for grain yield over environments**