

## **Short Research Article**

# **A Simple and Effective Phenol-Chloroform method of DNA extraction from mammalian feces**

---

### **ABSTRACT**

**Aims:** To non-invasively collect the fecal samples of 12 different mammals and devise a simple method of fecal DNA extraction using a modified phenol-chloroform procedure of DNA isolation for species identification.

**Study design:** The experiment was laid out to check the applicability of the devised protocol. Morphological identification was done in the field to collect samples from wild. The Molecular characterization was carried out in the Molecular laboratory for species identification.

**Place and Duration of Study:** Advanced Institute for Wildlife Conservation (AIWC), Tamil Nadu Forest Department, Vandalur, Chennai, Tamil Nadu. between July 2020 and July 2021.

**Methodology:** We devised a scat/ fecal DNA isolation protocol and tested its applicability on 81 samples (30 herbivores, 15 omnivores, 36 Carnivores). Fresh and old samples were collected from wild (n=41) and captive (n=40) areas and used for the study. Independent isolation for each species were carried out with extraction control. The DNA isolated samples were quantified for concentration using Nanodrop Spectrophotometer to considerably retrieve the DNA for amplification. Independent PCR amplification of mitochondrial regions of cytochrome b and 12S rRNA were performed and gel electrophoresis was carried out for each sample for positive amplicons. The PCR products were sequenced using genetic analyzer.

**Results:** The protocol was validated by checking the strength of the devised method to work on different ecological types. The sample size is n=81, positive amplification in cytochrome b region is 71 and 12S rRNA region is 79. Success of devised DNA extraction protocol on different population kinds, such as wild (n=41) and captive (n=40) were evaluated with a ratio of 'Positive PCRs of samples' against 'Total samples for PCR'. It is 97.56 % (cytochrome b) and 100 % (12S rRNA) of Wild population and 60.0 % (cytochrome b) and 95% (12S rRNA) of captive population.

**Conclusion:** The devised protocol successfully worked on both wild and captive populations of herbivores, omnivores and carnivores. The success rate is better in 12S rRNA region on comparison with Cytochrome b. The applicability and reliability of the protocol has been tested and validated by checking the obtained sequences in the NCBI database and submitting the same to the database.

*Keywords: Fecal DNA, Mammals, Molecular scatology, Modified phenol-chloroform method*

## **1. INTRODUCTION**

The Wildlife being a massive expanse needs persistent backing of growing molecular technology to explore, study and unravel the atypical or abstract species, particularly for species identification which is fundamental for ecological studies, and conservation, and associated management applications. Constantly advancing technology recognized non-invasive sampling as an easily accessible and safest sampling option, concerning the scale of disturbance created to the animals by invasive sampling. The choice of feces as a specimen of study most probably facilitates the clear indication of species' presence [1], preferable and beneficial over any other sample type.

In view of that, the molecular scatology, the self-explanatory terms specifying the study of genetic material extracted from the fecal sample gained attention and interests globally since the recent past. Various laboratory protocols have been formulated for fecal DNA extraction such as guanidium thiocyanate silica method, phenol-chloroform method [2], glass-milk method [3]. The applications of these methods have limitations due to the presence of inhibitors, rate of sample degradation, sample condition and fundamentally the protocol complexity demanding large dollops of feces, several chemical components and longer extraction procedures. To overcome the above limitations commercial kit method of extraction is widely adapted, which is efficient, nevertheless expensive. Though, commercial kits have reserved its chief utilization in regard to fecal DNA extraction, two major drawbacks of using any prescribed method are the non-applicability on herbivorous fecal material due to coloration, and the low retention and recovery of both quality and quantity of DNA. Although, fresh scats provide sufficient amount of DNA for analysis, largely the study design involves longer sampling over a few weeks. For these reasons, improved method of storage minimizing the degradation of DNA is highly crucial for sample viability and future analysis.

A convenient and exercisable approach for long-term storage coupled with considerable fecal DNA recovery from wide range of taxa and ecological types would be exceptionally valuable predominantly to the research groups working on population genetics of elusive species. This motivated to devise and propose a new method of laboratory protocol to find application and pliancy with routine laboratory consumables and tailored to wide range of mammalian species. The list of mammalian species picked for this study were based on their its ecological importance and illegal trade value and protection status (The Wildlife Protection Act, 1972). The study also displays the classification of selected species on its dietary nature such as herbivores, carnivores and omnivores to prove efficacy on DNA retrieval from animal faecal material.

## **2. MATERIAL AND METHODS**

### **2.1 Sample Collection**

The samples were collected from free ranging and captive mammalian species between September 2019 and March 2020 of Tamil Nadu Forest Department. The Samples were transported to the laboratory within 7-10 days and stored in dry place for extraction.

### **2.2 Sample Preservation**

All samples were collected using clean air-tight containers containing silica gel beads filled to their half, wherein the sample and the gel beads were separated by paper towel, so as to absorb the moisture that may result in undesirable microbial growth [8]. Post collection the samples were dried under the warmth of sunlight, devoid of direct exposure. Such a method of preservation allows long-term preservation and storage of scat irrespective of the diet habit of the mammalian species.

## 2.3 DNA Extraction

DNA extraction was carried out through swabbing using Longmire buffer (100mM Tris 100mM EDTA, 10mM NaCl, 0.5% SDS, Autoclaved water, pH 8.0) [4], to enable the retention of epithelial cells rich in superficial layer. Centrifuge tubes of 2mL containing 850  $\mu$ L Longmire buffer with sterile sample swab (Himedia), 25  $\mu$ L of 20 mg/mL proteinase K and 25  $\mu$ L of 10mM of DTT were added and samples were subjected to incubation at 56 °C for 4-6 hrs. A modified phenol chloroform method of extraction was followed on completion of digestion process [5] with decreased chemical/ reagent reaction time to 1 min of inversion mixing. The samples were incubated at (-20°C) overnight, for precipitation of DNA using 1 volume of (96 - 100%) Isopropyl Alcohol. The resulting pellet was washed with 70 % ethanol twice, air-dried and eluted in 30-60  $\mu$ L of autoclaved nuclease free water depending on the transparency and coloration of the pellet. The samples of each species were isolated independently with one extraction control to monitor for contamination.

**Table 1: List of Species sampled**

| Species Name                                  | Sample Number | Positive Amplification |          |
|---|---------------|------------------------|----------|
|   |               | Cytochrome b           | 12S rRNA |
| HERBIVORES                                    |               |                        |          |
| Elephant ( <i>Elephas maximus</i> )           | 23            | 23*                    | 23*      |
| Indian gaur ( <i>Bos gaurus</i> )             | 2             | 1                      | 1        |
| Sambar deer ( <i>Rusa unicolor</i> )          | 3             | 3*                     | 3*       |
| Black Naped Hare ( <i>Lepus nigricollis</i> ) | 2             | 2*                     | 2*       |
| OMNIVORES                                     |               |                        |          |
| Wild pig ( <i>Sus scrofa</i> )                | 2             | 2*                     | 2*       |
| Sloth bear ( <i>Melursus ursinus</i> )        | 4             | 2                      | 4*       |
| Slender loris ( <i>Loris lydekkerianus</i> )  | 2             | 2*                     | 2*       |
| Jackal ( <i>Canis aureus</i> )                | 7             | 4                      | 6        |
| CARNIVORES                                    |               |                        |          |
| Tiger ( <i>Panthera tigris</i> )              | 13            | 11                     | 13*      |
| Wild dog - Dhole ( <i>Cuon alpinus</i> )      | 11            | 10                     | 11*      |
| Mongoose ( <i>Herpestes edwardsii</i> )       | 5             | 5*                     | 5*       |
| Hyaena ( <i>Hyaena hyaena</i> )               | 7             | 6                      | 7*       |
| TOTAL   |               |                        |          |
|   | 81            | 71                     | 79       |

\*this symbol indicates that positive amplification success per sample using each marker is the same as sample number

The listed species are based on the classification of their feeding routine. Amplification in PCR of mtDNA markers Cytochrome b with L14841 & H15141 and 12S rRNA with L1091 & H1478, L1085 & H1259. The asterisked numbers denote complete successful amplifications.

## 2.4 PCR and Sequencing

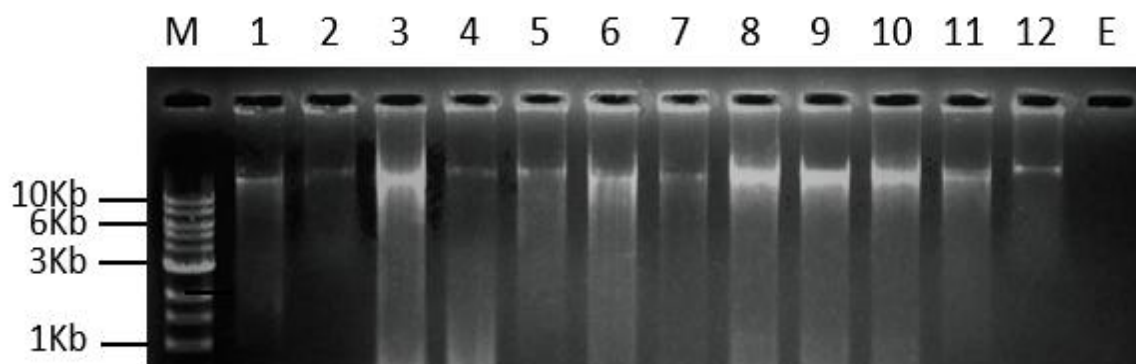
The partial fragments of mitochondrial DNA such as Cytochrome b [6] yielding 370bp, 12S rRNA [7] yielding 215bp, and 12S rRNA [6] yielding 500bp were amplified. The PCR amplification was carried out in Eppendorf Nexus GSX1 Mastercycler in 10  $\mu$ L reaction volumes. Each PCR reaction was prepared comprising 1X Taq Buffer (KAPA Biosystems,

SIGMA), 0.25 mM dNTPs, 0.4  $\mu$ M of both forward and reverse primer, 2.5 mM MgCl<sub>2</sub>, 0.25 U Taq DNA Polymerase (KAPA Biosystems, SIGMA) and 1  $\mu$ L of template DNA. Cycling conditions consisted of 5 min. of initial denaturation at 95 °C, followed by 35 cycles of 30 seconds of denaturation at 95 °C, annealing at 55 °C (Cytochrome b, 12S) [6] and 57°C (12S) [7], 45 seconds of extension at 72 °C and final extension at 72°C for 10 min. The 12S PCR was set up with primer concentration of 0.5  $\mu$ M of both forward and reverse primer. The PCR reactions were set with positive and non-template controls. The PCR amplicons were visualized in 2% agarose gel with novel juice stain and documented using BioRad XR+ gel doc system. The PCR samples were purified using QIAquick gel extraction kit (Qiagen, Germany) and sequences were obtained through Sanger sequencing performed in ABI 3730 Genetic Analyzer (Applied Biosystems, USA). The authenticity of the sequenced samples was confirmed by NCBI Blast and submission of sequences to the NCBI database. During PCR experiments each sample lot was monitored for contamination by inclusion of PCR positive control, DNA extraction control, PCR No-template control (No-DNA). To confirm the reliability of the DNA extraction protocol the products were checked for positive amplification in no sample extraction control.

### 3. RESULTS AND DISCUSSION

By and large, the assessment of a novel protocol for fecal DNA extraction is challenging due to a few key reasons such as: 1. The DNA quantity from the animal feces is too low, 2. High possibility of unintended microbial DNA extraction [9], 3. Fragmented target gene regions. In the present study, the protocol was followed with default 4 hours of extraction digestion time, reduction reflects in the DNA concentration. The reduction in reaction time of each chemical treatment in the phenol-chloroform procedure resulted in isolation of intact DNA of the sample as displayed in the gel picture (Figure 1) where large amount of DNA extracted with higher band intensity clearly attributes to the strength of the devised protocol.

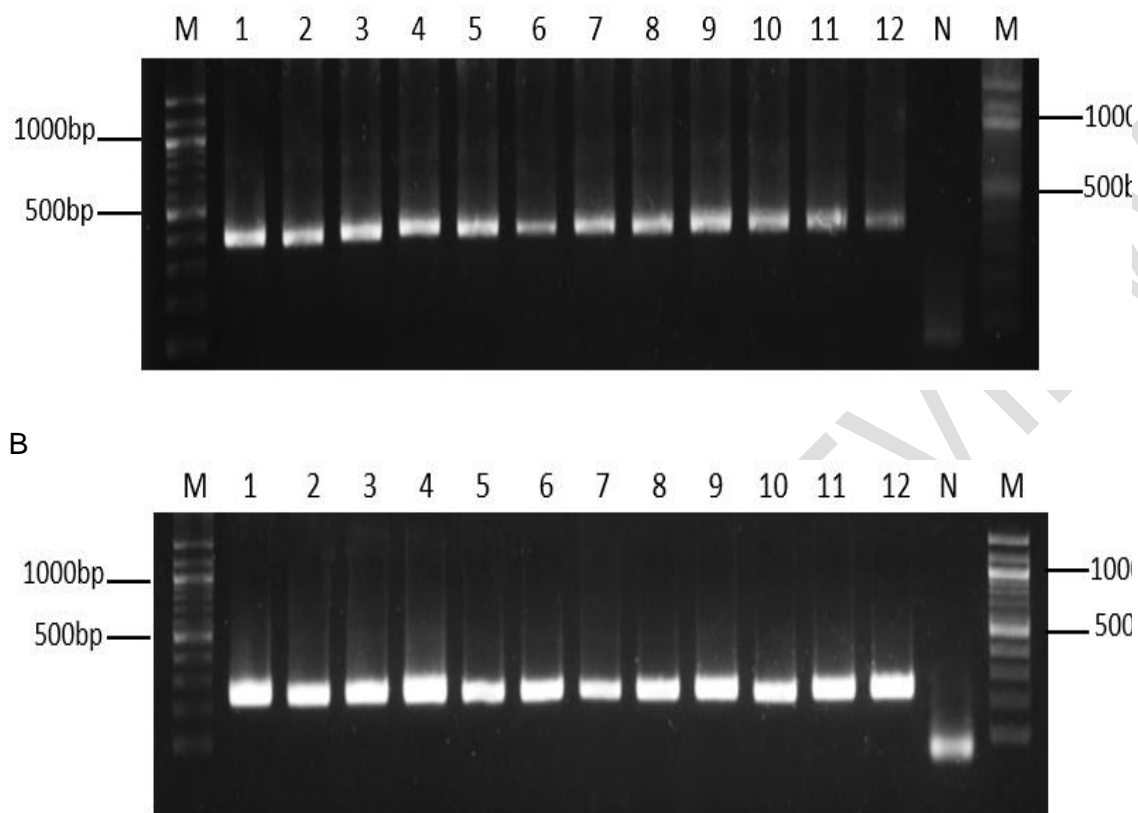
#### 3.1 DNA Extracted faecal samples



**Figure 1. Fecal DNA from 12 Tigers (*Panthera tigris*) faecal samples detected on a 0.8% agarose gel stained with novel juice stain. Lane M- DNA ladder, Lane E – Extraction control.**

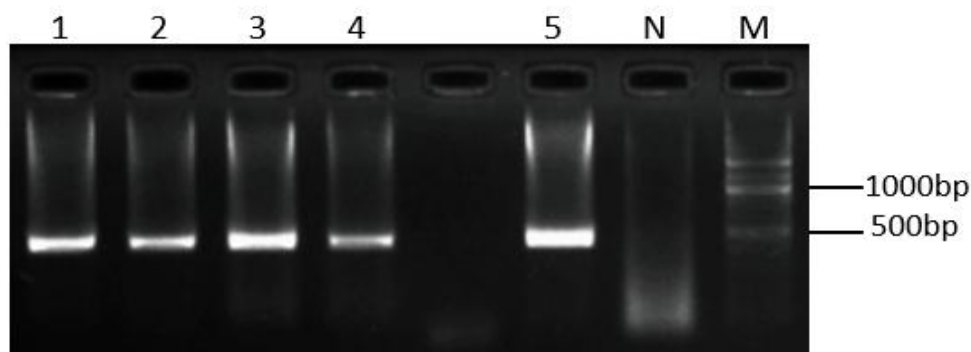
#### 3.2 Gel Result of PCR amplified samples Cytochrome b and 12S rRNA products

A



**Figure 2 (A, B).** Amplified products of mtDNA cytochrome b gene (A) of 370bp from fecal DNA of different animals using primers L14841 and H15149 and 12S rRNA gene (B) from fecal DNA of different animals using primers L1085 and H1259 yielding the size range of 215bp to 240bp, detected on a 2.0% agarose gel, the products were stained with Novel Juice Stain (NJS). Lanes: 1, Indian Elephant; 2, Gaur or Indian Bison; 3, Sambar deer; 4, Black Naped Hare; 5, Wild pig; 6, Sloth bear; 7, Slender loris; 8, Jackal; 9, Tiger; 10, Wild dog or Dhole; 11, Mongoose; 12, Hyaena; M – 100bp DNA ladder; N – Negative control.

Further, validity of the devised protocol was observed in successful amplifications in almost all the different species using polymerase chain reaction. The gel images (Figure 2 & 3) of cytochrome b and 12S rRNA markers' amplification display the integral conservation of 12S rRNA mtDNA region and cytochrome b marker. To check the amplification ability in obtaining amplicons of higher size range of 450bp to 550bp, we used primer set L1091/H1478 on a few species with a positive control (Figure 3).



**Figure 3.** Amplified products of mtDNA 12S rRNA gene from fecal DNA of different animals using primers L1091 and H1478 yielding the size range of 450bp to 550bp, detected on a 2.0% agarose gel, the products were stained with Novel Juice Stain (NJS). Lanes: 1, Wild pig; 2, Slender loris; 3, Tiger; 4, Hyaena; 5, Positive Control; M – 100bp DNA ladder; N – Negative control.

The average percentage (Table 2) of positive amplification on either of the population kind with primer set L1085/H1259 is between 97.5 to 100%, and that of primer set L14841/H15149 is 78.88 %. On a performance comparison, 12S rRNA markers showed better amplification to Cytochrome b marker. All mitochondrial regions employed in this study allowed appropriate identification of all class of species, the Herbivores, Carnivores and Omnivores tested using scat samples.

**Table 2: Success of devised DNA extraction protocol on different population**

| Population Kind | Sample Number | Successful amplification<br>(Positive PCRs of samples/ Total samples for PCR) |               |
|-----------------|---------------|---|---------------|
|                 |               | Cytochrome b  | 12S rRNA      |
| Wild            | 41            | 97.56 % (40/41)   | 100 % (41/41) |
| Captive         | 40            | 60.0 % (24/40)  | 95 % (38/40)  |

The local alignment BlastN tool was used for identification of species, which revealed known species match with the expected species. A few partial sequences of both the mtDNA markers were submitted to the NCBI database for each species. The BankIt submissions of cytochrome b and GenBank submissions of 12S rRNA are listed in the table (Table 3). All the listed species were successful in both the primers, except for Indian gaur, Sloth bear, Jackal in sequencing of cytochrome b region. This would be due to fragmented cytochrome b region in the DNA isolated from the their fecal samples.

**Table 3: Submissions to the NCBI database**

| Species                                       | Accession number |          |
|---|------------------|----------|
|   | Cytochrome b     | 12S rRNA |
| Elephant ( <i>Elephas maximus</i> )           | MW999345         | MW900440 |
| Indian gaur ( <i>Bos gaurus</i> )             | -                | MZ427324 |
| Samber deer ( <i>Rusa unicolor</i> )          | MZ436174         | MW979410 |
| Black Naped Hare ( <i>Lepus nigricollis</i> ) | MW999344         | OM022006 |

|  |          |          |
|--|----------|----------|
| Wild pig ( <i>Sus scrofa</i> )               | MZ540014 | MZ531907 |
| Sloth bear ( <i>Melursus ursinus</i> )       | -        | MZ427323 |
| Slender loris ( <i>Loris lydekkerianus</i> ) | MW924861 | MW899376 |
| Jackal ( <i>Canis aureus</i> )               | -        | MZ405567 |
| Tiger ( <i>Panthera tigris</i> )             | MZ927339 | MZ408531 |
| Wild dog - Dhole ( <i>Cuon alpinus</i> )     | MW911472 | MW904022 |
| Mongoose ( <i>Herpestes edwardsii</i> )      | MZ540015 | OK103788 |
| Hyaena ( <i>Hyaena hyaena</i> )              | MZ331839 | MZ088142 |

The preservation and DNA extraction was carried out on mammalian scat samples of different dietary intake so as to assess the applicability of the protocol. Usually, the feces of herbivorous animals contain polysaccharides and phenolic substance from plant tissue [11] and carnivorous animal feces contain bile salts and bilirubins [10] both of which act as a strong inhibitor of DNA utilization during isolation and PCR process. To circumvent this effect, various chemical treatments or proprietary kits are used. But the successful elimination of potent PCR barriers without any inclusion of such treatments shows the higher efficiency of the method to existing conventional faecal DNA methods. It uses crude feces following the above-mentioned storage procedure even for quite a long duration up till 1 to 2 years without the need for any sophisticated treatment.

#### 4. CONCLUSION

The modified phenol chloroform method for DNA isolation from mammalian faeces has proven to be an inexpensive alternative when it comes to unassured results of costly commercial kits. Therefore, the method is best suitable to ascertain the species identity of mammals in the wild where only faeces is the available source of biological sample. This method has proved to be convenient and exercisable approach for long-term storage coupled with considerable faecal DNA recovery from wide range of taxa and ecological types would be exceptionally valuable to the research groups working on phylogeography, genetics and population ecology of wildlife species.

#### ETHICAL APPROVAL

The present work does not involve any experimentation on live animals. As the study involved non-invasive biological sampling of mammalian scat or feces, which are generally considered as animal waste, permissions from ethical committees on animal experimentation and conservation are not required.

#### COMPETING INTERESTS DISCLAIMER:

Authors have declared that no competing interests exist. The products used for this research are commonly and predominantly use products in our area of research and country. There is absolutely no conflict of interest between the authors and producers of the products because we do not intend to use these products as an avenue for any litigation but for the

advancement of knowledge. Also, the research was not funded by the producing company rather it was funded by personal efforts of the authors.

## REFERENCES

- [1] Kohn MH, Wayne RK. Facts from feces revisited. *Trends in ecology & evolution*. 1997;12(6):223-227.
- [2] Ernest HB, Penedo MCT, May BP, Syvanen M, Boyce WM. Molecular tracking of mountain lions in the Yosemite Valley region in California: genetic analysis using microsatellites and faecal DNA. *Molecular ecology*. 2000;9(4):433-441.
- [3] Reddy PA, Bhavanishankar M, Bhagavatula J, Harika K, Mahla RS, Shivaji S. (2012). Improved methods of carnivore faecal sample preservation, DNA extraction and quantification for accurate genotyping of wild tigers. 2012;e46732
- [4] Longmire JL, Maltbie M, Baker RJ. (1997). Use of " lysis buffer" in DNA isolation and its implication for museum collections. Museum of Texas Tech University.
- [5] Gaur , Reddy A. DNA techniques in wildlife forensics (animals): standard operating procedures (SOP). CSIR Centre for Cellular and Molecular Biology, Hyderabad, 2017;37.
- [6] Kocher TD, Thomas WK, Meyer A, Edwards SV, Pääbo S, Villablanca FX, Wilson AC. Dynamics of mitochondrial DNA evolution in animals: amplification and sequencing with conserved primers. *PNAS*. 1989;86(16):6196-200
- [7] Kitano T, Umetsu K, Tian W, Osawa M. Two universal primer sets for species identification among vertebrates. *International journal of legal medicine*. 2007;121(5):423-427.
- [8] Sharma R, Stuckas H, Bhaskar R., Rajput S, Khan I, Goyal SP, Tiedemann R. mtDNA indicates profound population structure in Indian tiger (*Panthera tigris tigris*). *Conservation genetics*. 2009;10(4):909-914.
- [9] Taberlet P, Luikart G. Non-invasive genetic sampling and individual identification. *Biological journal of the linnean society*. 1999;68(1-2):41-55.
- [10] Zhang BW, Li M, Ma LC, Wei FW. A widely applicable protocol for DNA isolation from fecal samples. *Biochemical Genetics*. 2006;44(11-12):494.
- [11] De BC, Patra MC, Kumar S, Brahma B, Goutam D, Jaiswal L, De S. Noninvasive method of DNA isolation from fecal epithelial tissue of dairy animals. *Animal biotechnology*. 2015;26(3):211-2