

Original Research Article

Seismic Response of Stiffness Irregularity at Ground Floor with and without Shear Walls

ABSTRACT

In today's scenario, one of the greatest challenges for structural engineers is designing and constructing seismic-resistant structures. Seismic activity, or earthquakes, poses a significant threat to civil engineering structures, and ensuring that buildings can withstand the forces generated during an earthquake is crucial for public safety and infrastructure resilience. Irregular configurations, whether in the building's floor plan or its elevation, are widely acknowledged as significant contributors to failure during seismic events. These irregularities can lead to uneven distribution of forces and stresses, compromising the building's ability to withstand the seismic forces and potentially resulting in structural failure. Hence, the present study investigated the seismic response of irregular reinforced concrete structure possessing stiffness irregularity at ground floor with and without shear wall. A ten-storey regular frame is modified by incorporating vertical irregularity in elevation by increasing the height of ground floor. The complete structural analysis and modeling are carried out by using the software Etabs 2020. The Time History method is applied, and the study is focused on seismic zones V in India. The performance of structures are compared based on criteria such as storey displacement, storey drift, storey shear and overturning moment. The results lead to the conclusion that a building structure exhibiting stiffness irregularity is prone to instability which is indicated by higher displacement and drift values. Structure incorporating shear walls has demonstrated greater stability compared to structure without shear wall as they exhibited higher base shear values. The presence of shear walls also has enhanced the stability and strength of the structure, showing a linear response during critical earthquake.

Keywords: Stiffness irregularity; earthquake; time history method; shear wall.

1. INTRODUCTION

Recent and historical earthquakes have demonstrated that inadequate construction and design practices, both in terms of quality and quantity, can result in significant losses and destruction of structures. In today's urban cities, it is not practical to construct structures with regular configurations in most cases due to factors such as irregular plot dimensions, aesthetic considerations, and functional requirements. However, structures with irregular configurations, whether horizontally or vertically, are more susceptible to the forces of earthquakes and wind, which can result in structural collapse, property damage, and casualties. Buildings with irregularities, particularly those constructed in seismically active areas, are not recommended due to their increased vulnerability to seismic events. Therefore, it is crucial to understand the seismic responses of such structures by conducting thorough seismic analysis. While building codes recommend regular configurations, real-world constraints often necessitate irregular structures, especially in earthquake-prone areas. There have been research efforts to understand the behavior of irregular configuration structures under earthquake forces, there is still a

need for well-established guidelines specifically for multi-storey structures with irregular configurations.

Soft storeys are often incorporated at the ground level to provide ample space for parking, commercial activities, or other functional uses. While soft storeys offer benefits in terms of functionality, aesthetics, and construction economics, they can pose significant challenges in terms of structural integrity during seismic events. The lack of lateral load-resisting elements, such as shear walls or bracing, in a soft storey makes it susceptible to excessive lateral deformation and collapse during earthquakes. In regions prone to seismic activity, special attention must be given to designing soft storeys to ensure that they do not compromise the overall seismic performance and safety of the structure.

Shear walls, vertical elements added to structures, effectively resist lateral forces like wind, blasts, and earthquakes. Their inclusion provides a robust solution to prevent building collapse, making them excellent for enhancing earthquake resistance in multi-storey reinforced concrete buildings.

Poonam et al. (2012) studied the response of 10 storeyed plane frame to lateral loads with mass and stiffness irregularities in the elevation. It was concluded that the less drift was for the regular frame configuration while the maximum drift was for the models with floating columns. Maximum shear was obtained for the frames carrying the heavier mass [1].

Patil et al. (2017) studied the dynamic response of multi-storey buildings with plan asymmetry. They have numerically analyzed multi-storeyed frames having different plan shapes. It was reported that the increase in height of T and L shaped buildings increased the displacement response and stress at the re-entrant corners [2].

Pujar et al. (2017) conducted a study on seismic analysis of plan irregular multi-storied buildings with and without shear walls. In this study, G+9 RCC buildings were modeled with horizontal geometric irregularities like I-Shape, L-Shape and C-Shape. It was concluded that by deploying shear walls the uprooting effect of the building was decreased by 50–70% [3].

Dubule et al. (2018) considered residential building of G+ 13 storied structure for the seismic analysis which was located in zone III. Three types of irregularities namely mass irregularity, stiffness irregularity and combination of stiffness and mass irregularity were considered. It was concluded that the storey shear force was found to be maximum for the first storey and it decreased to minimum in the top storey in all cases. The stiffness irregular structure experienced lesser base shear and had larger inter-storey drifts [4].

Siva et al. (2019) studied a total of 54 irregular frame consisting of 34 configurations have single irregularity and 20 have combinations of irregularities. It was concluded that the combination of stiffness and vertical geometric irregularities had shown maximum displacement response whereas the combination of re-entrant corner and vertical geometric irregularities had shown less displacement response. The structural response depended on the type, location and degree of irregularity [5].

Zabihullah et al. (2020) conducted a study on effect of (vertical & horizontal) geometric irregularities on the seismic response of RC structures. It concluded that the vertical geometric irregularity model provided superior seismic performance whereas horizontal geometric irregularity model provided least seismic performance among the models compared [6]. Karra et al. (2021) conducted a study on a 40 storey high-rise building with mass and stiffness irregularity at different location. It had been noted that the proposals of using the irregularities of mass and soft storey in the middle position of the 40 storey building was the best selection, if the regular building was not the choice for the architects of the project [7].

Zaid et al.(2021) observed the performance of simple G+10 Structure without and with shear wall and RCC X-bracing system and the effect of vertical irregularity (stiffness irregularity) was introduced at 3rd and 6th floors in high rise building (G+10). The results obtained from STAADPro concluded that storey with increased storey height at lower storey's levels leads to more damage under seismic load. Shear wall model was the most effective structure and storey drift decreased to a minimum when irregular Structure was stiffened with the shear walls [8].

Neeraja et al. (2022) studied G+12 reinforced concrete framed structures, including both regular and various models with stiffness irregularities, to analyze the potential of progressive collapse in buildings. The failure of elements was more in stiffness of irregular models when compared to regular model. This showed that structures having irregularity in stiffness were more prone to progressive collapse [9].

Rachakonda et al. (2022) conducted a study on buildings with horizontal irregularity, vertical irregularity, stiffness irregularity and mass irregularity with and without shear wall and responses of the buildings were compared. It was concluded that vertical geometrical irregular building with shear wall had shown considerably better performance than other irregular buildings. By adding shear walls to irregular building models, the overall performance of the building was increased nearly 60-70% [10].

Intekhab et al. (2023) conducted a study on high rise buildings with different methods for analysis of seismic irregularities. It was concluded that the non-linear time history analysis, increment dynamic analysis, considered several intensity of ground vibrations to perform nonlinear analysis. Therefore, the method performed well against the other analytical techniques as all the scaled ground motions were recorded to predict the damage due to earthquake [11].

According to IS 1893 (2016), a structure is considered to have stiffness irregularity if its lateral stiffness is less than the storey immediately above it [12]. Hence, this study investigated the seismic impact of the Nepal (Gorkha) Earthquake 2015 by using time history analysis. A ten-storey regular frame is modified to include stiffness irregularities in elevation by increasing the height of ground floor with and without shear walls. The performance of structures is evaluated by comparing various criteria, such as storey displacement, storey drift, storey shear, and overturning moment.

2. METHODOLOGY

The present research focused on analyzing a (G + 9) multi-storied building with a built-up area of 30 m x 30 m. The column-to-column distance is maintained at 5 m in both X and Y directions. The study explored stiffness irregularity with and without shear walls using ETABS 2020 software. The structural analysis involved the application of time history methods, specifically considering seismic Zone V.

Stiffness Irregularity without shear is addressed by adjusting the height of the ground floor to 4.5 m, while maintaining a height of 3 m for all other floors.

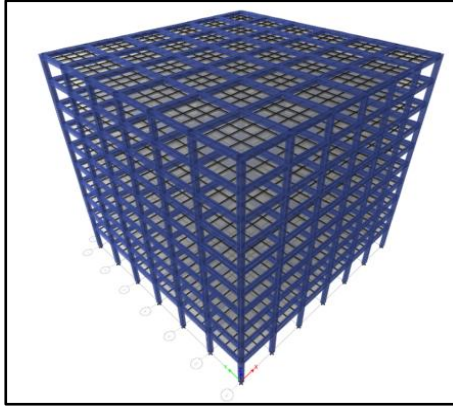


Fig. 1. Stiffness Irregularity without Shear Wall (SIWoSW)

Stiffness Irregularity with shear wall is addressed by adjusting the height of the ground floor to 4.5 m, while maintaining a height of 3 m for all other floors along with the addition of shear walls at 4 corners in L shape.

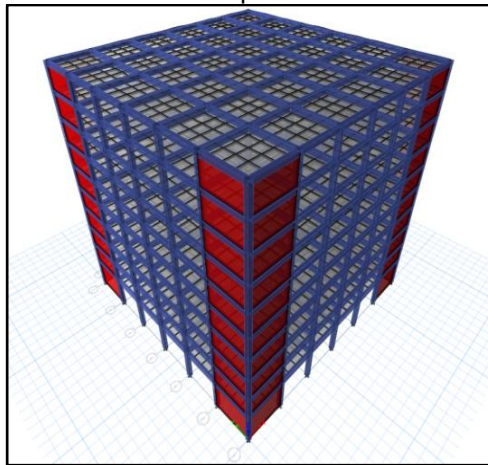


Fig. 2. Stiffness Irregularity with Shear Wall (SIWSW)

The essential parameters considered for the analysis are outlined below:

1. No of Stories: 10 (G+9)
2. Slab size: 0.150m
3. Column size: 450 mm x 450 mm
4. Beam size: 400 mm x 500 mm
5. Shear wall thickness: 0.150m
6. Live load (occupancy): 3.0 KN/m^2 and 1.5 KN/m^2 (roof) [13]
7. Dead load (floor finish): 1.5 KN/m^2 [14]
8. Density of concrete: 25 KN/m^3
9. Steel grade: Fe550
10. Importance factor: 1.5 [12]
11. Response reduction factor: 3 [12]
12. Damping Ratio: 5% [12]

The following data has been taken into account in this research work to conduct time history analysis:

1. Seismic event name: Nepal (Gorkha) Earthquake 2015
2. Date of occurrence of seismic event: 25th April 2015
3. Magnitude: 6.6
4. Station: KTP, Kirtipur Municipality Office, Kirtipur

3. RESULTS AND DISCUSSION

3.1 Storey Displacement

The storey displacement results obtained from time history X and Y direction are visually depicted in Fig. 3 and Fig.4 respectively. Structure with shear walls has shown less displacement values at all the storeys as compared to structure without shear wall. Among all the storeys, the maximum displacement is observed at terrace. The addition of shear walls resulted in an average reduction of over 40% in overall displacement because the presence of shear walls in a structure reduces the lateral displacement or movement of the building when subjected to lateral loads. The findings of the storey displacement align with earlier research that used the response spectrum method, indicating a consistent pattern of reduced displacement in building storeys when shear walls was incorporated by Rachakonda et al. [10].

Sonawane et al. conducted a study on 12-story building with different configurations and irregularities was analyzed using ETABS software in zone V. It was concluded that in buildings with soft stories, the stiffness decreased causing an increase in story displacement [15].

Pardeshi et al. conducted experimental investigation on reducing the size of the member to make structure economical and efficient by locating shear wall at varying places in irregular shape building. It was concluded that the top deflection was reduced and reached within the permissible deflection after providing the shear wall in shorter direction [16].

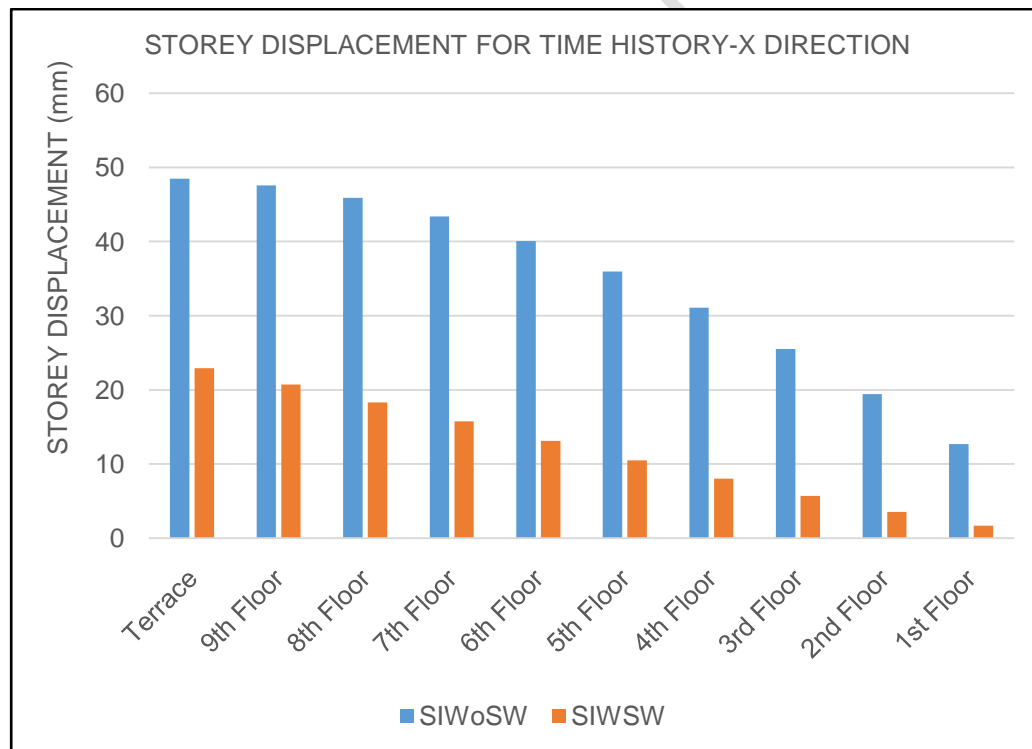


Fig. 3. Storey Displacement for Time History-X direction

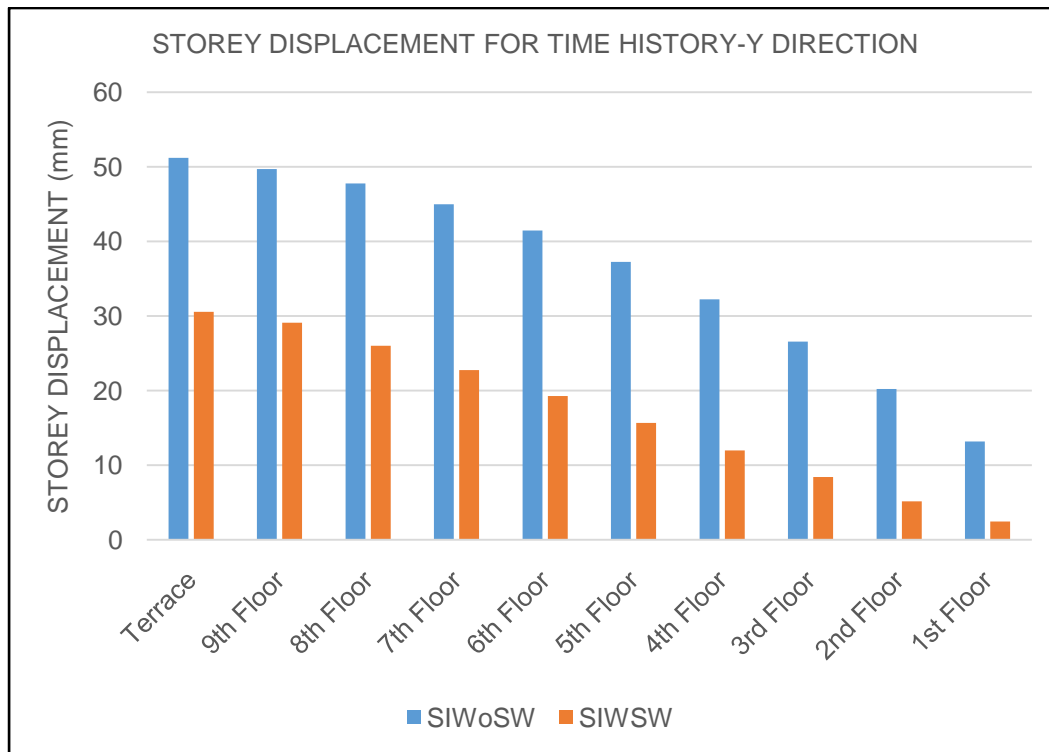


Fig. 4. Storey Displacement for Time History-Y direction

3.2 Storey Drift

Storey drift results in both X and Y direction are visually depicted in Fig. 5 and Fig. 6 respectively. Structure with shear walls has shown less drift values at all the storeys as compared to structure without shear wall. Among all the stories, the first floor has experienced the maximum drift, primarily due to the increase in the height of the ground floor. Due to the inclusion of shear walls, the reduction is most significant at the first floor, amounting to more than 80% which is due to the role of shear walls in mitigating the lateral drift of the structure when subjected to lateral loads.

Ali et al. conducted a seismic analysis to assess the impact of soft storey configurations in G+6 building frames. The study concluded that buildings with a soft storey on any floor was susceptible to earthquake damage due to the reduced stiffness of the soft storey. The maximum drift was observed at the floor with the soft storey, surpassing the drift at adjacent floor levels [17].

The results regarding storey drift are consistent with previous research that employed the response spectrum method. This alignment suggests a recurring trend of decreased drift in building storeys when shear walls are added Rachakonda et al. [10]. Buildings characterized by a soft storey experienced an increase in lateral drift, as noted in the research conducted by Sonawane et al. [15].

Zaid et al. shear wall model was the most effective structure and storey drift decreased to a minimum when irregular structure was stiffened with the shear walls [8].

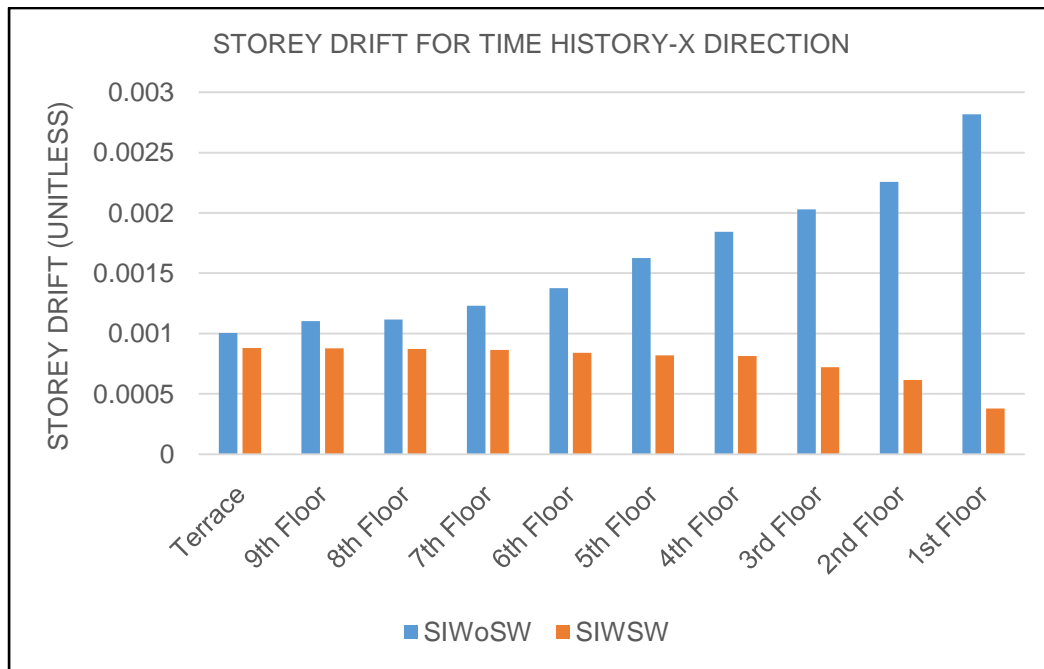


Fig. 5. Storey Drift for Time History-X direction

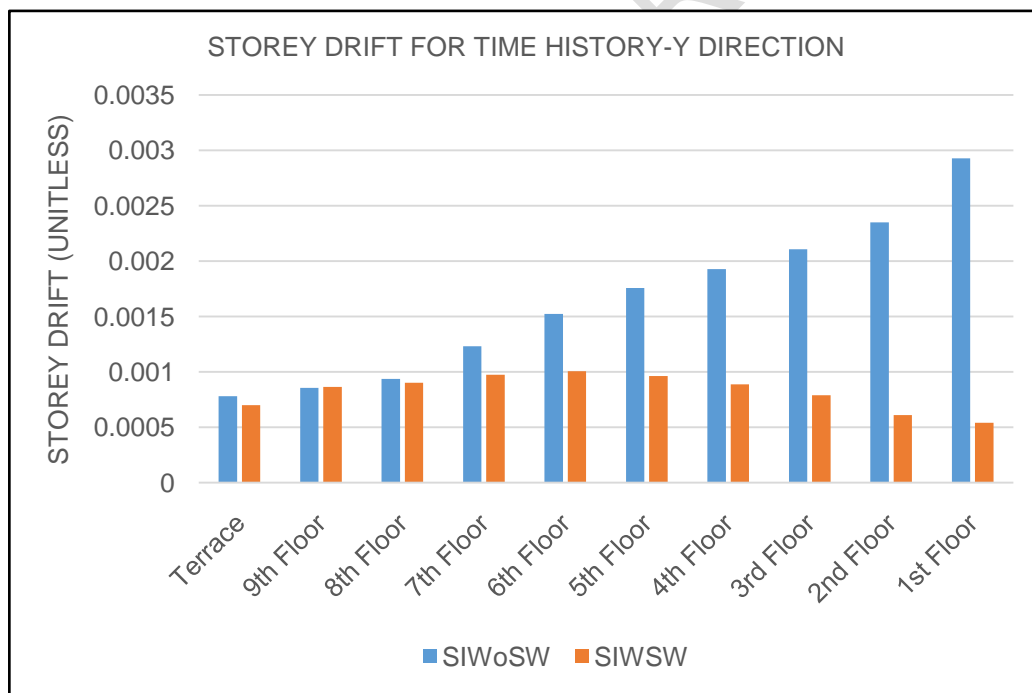


Fig. 6. Storey Drift for Time History-Y direction

3.3 Storey Shear

The results of storey shear in both the X and Y directions are visually presented in Fig. 7 and Fig. 8, respectively. In stiffness irregularity, there is a linear increase in storey shear from the terrace to the first floor. Dubule et al. concluded that the storey shear force was found to be maximum for the first storey and it decreased to minimum in the top storey in all cases [4].

The storey shear is more for the structure with shear walls as compared to without shear walls as shear walls enhance the overall stability and seismic performance. The addition of shear walls led to an increase of more than 40% in storey shear because storey shear is influenced by the seismic weight of the structure, and thus, a structure with shear walls exhibited higher shear compared to a structure without shear walls.

Poonam et al. analyzed 10 storeyed plane frame to lateral loads with stiffness irregularities in the elevation and concluded that maximum shear was obtained for the frames carrying the heavier mass [1].

Chandras et al. study involved conducting pushover analysis on a G+9 multistoried building using SAP 2000 software to investigate the effects of a soft storey at various floor levels. It was observed that the presence of infill walls was noted to have a substantial impact on the stiffness and lateral resistance of a frame structure [18].

The analysis revealed that the storey shears were highest at the base of the structure and progressively decreased from the base to the top concluded by Mon et al. [19].

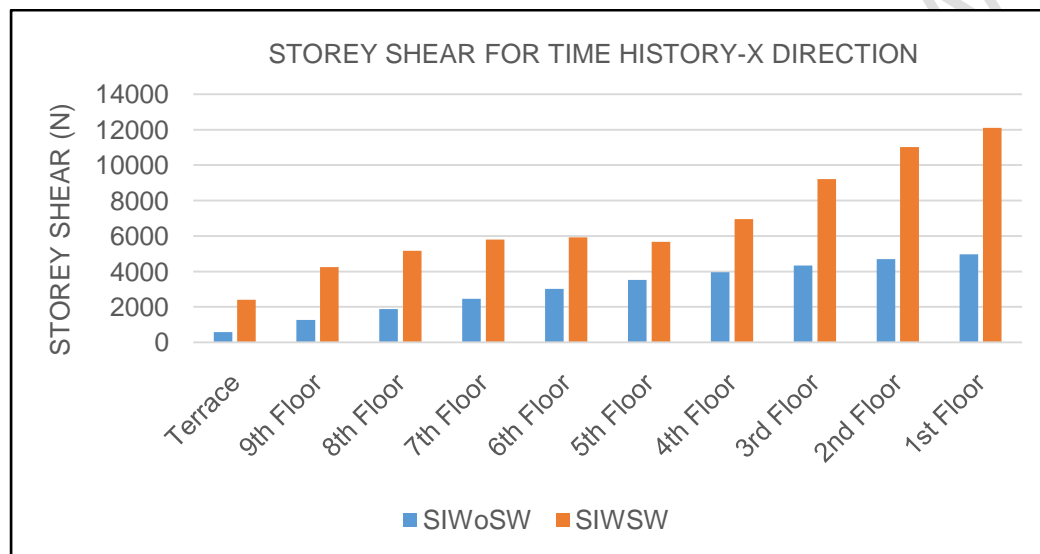


Fig. 7. Storey Shear for Time History-X direction

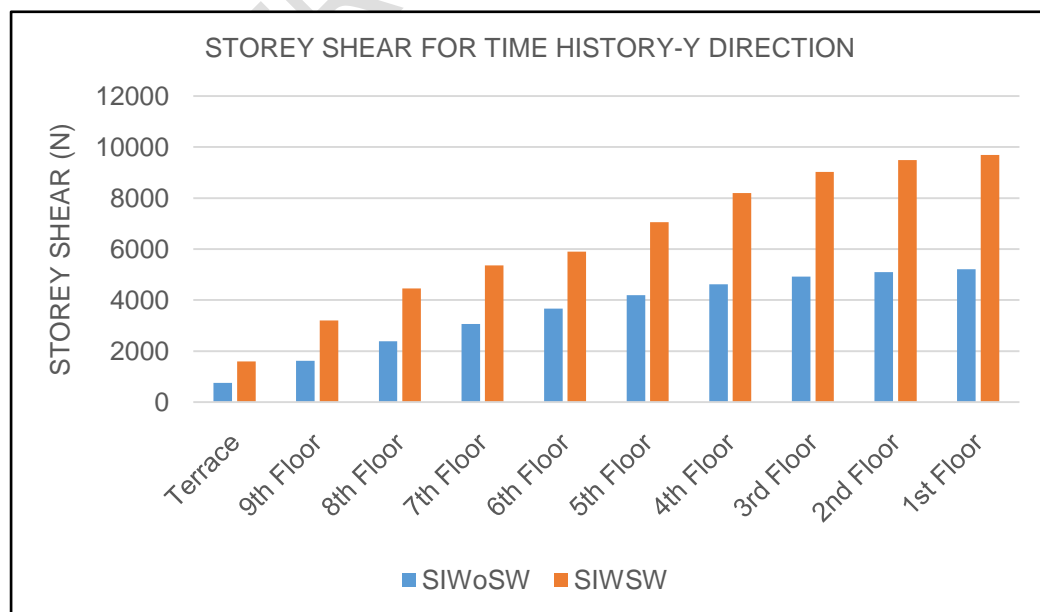


Fig. 8. Storey Shear for Time History-Y direction

3.4 Overturning Moment

The results of overturning moment in both the X and Y directions are visually presented in Fig. 9 and Fig. 10, respectively. In stiffness irregularity, there is a linear increase in overturning moment from the terrace to the first floor. The overturning moment is more for the structure with shear walls as compared to without shear walls. The addition of shear walls resulted in a significant increase of more than 40% in overturning moment as overturning moment is influenced by the seismic weight and height of the structure.

Pujar et al. reported that by deploying shear walls the uprooting effect of the building was decreased by 50–70% [3].

Mon et al. studied comparative analysis of high-rise reinforced concrete irregular building with shear walls. It was concluded that the story moment was influenced by the seismic load, with the largest story moment observed at the base [19].

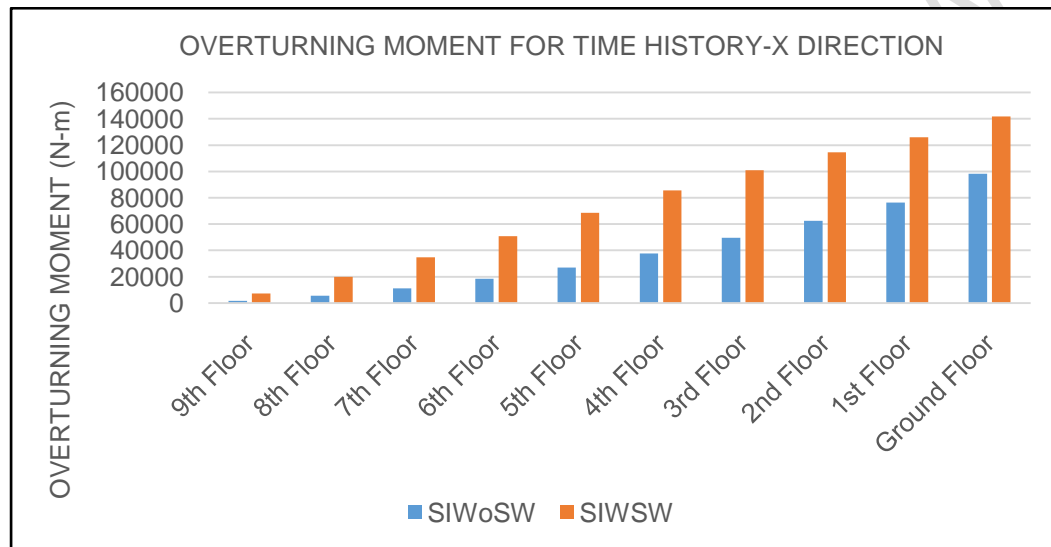


Fig. 9. Overturning Moment for Time History-X direction

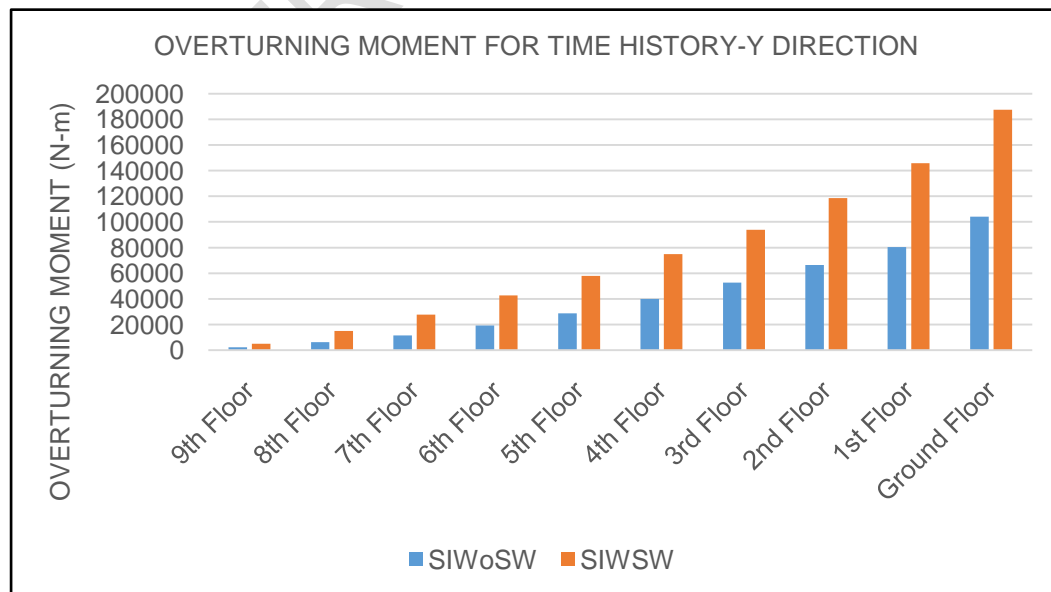


Fig. 10. Overturning Moment for Time History-Y direction

4. CONCLUSION

In the context of this research, an investigation of the seismic analysis of structural behaviour concerning vertical irregularity which is stiffness irregularity considering parameters like displacement, drift, shear and overturning moment with and without inclusion of shear wall is carried out. The observations of the response during the significant earthquake provide the basis for the following conclusions:

1. The inclusion of shear walls in an irregular structure resulted in a significant improvement in the overall performance of the building under lateral forces, increasing it by approximately by more than 50%.
2. The addition of shear walls led to a reduction of more than 40% in storey displacement values which signifies an increase in the stiffness of the structure, enabling it to better withstand lateral forces acting on the building.
3. The highest storey drift was observed at the first floor due to an increase in height at the ground floor. However, after the addition of shear walls, the storey drift decreased by more than 80% at the first floor, indicating a substantial improvement in the building's stability and resistance to lateral forces.
4. The base shear and overturning values are increased by more than 40% with addition of shear walls due to the increase in seismic weight of structure.
5. Structures with inclusion of shear walls demonstrated greater stability compared to structures without shear walls, as indicated by the higher levels of base shear and overturning moment associated with shear walls.

These conclusions collectively suggests that the shear wall make the irregular structure perform better during intensive earthquake.

REFERENCES

1. Poonam AK and Gupta AK. Study of response of structurally irregular building frames to seismic excitations. *International Journal of Civil Structural*. 2012;2:25-31.
2. Patil, SS, Mujawar A, G, Mali P, Katti M and R. A study of torsional effect on multi-storied building with plan irregularity. *International Journal of Advanced Research*. 2017;5:1625-1632.
3. Pujar P and A. Seismic analysis of plan irregular multi-storied building with and without shear walls. *International Research Journal of Engineering and Technology*. 2017;4:2395-0056.
4. Dubule SC and Ainchwar D. Seismic Analysis and Design of Vertically Irregular R.C. Building Frames. *International Journal of Recent Research in Science, Engineering and Technology*. 2018;4:2395-7638.
5. Siva N, Abraham NM and Kumari A. Analysis of irregular structures under earthquake loads. *Procedia Structural Integrity*. 2019;14:806–819.
6. Zabihullah, Singh P and Mohammad ZA. Effect of (vertical & horizontal) geometric irregularities on the seismic response of RC structures. *International Journal of Engineering and Techniques*. 2020;11:965-974.

7. Karra SM, Hajal I, Rawi YAI and Aya D. Effects of architectural irregularities on the seismic behavior of buildings. American Journal of Engineering and Applied Sciences. 2021;14:162-176.
8. Zaid M, Miraz M, Warsi MFS and Pal S. Seismic Analysis of Vertically Regular and Irregular Buildings with Shear Walls and RCC X-Bracing System. Advances in Construction Materials and Sustainable Environment. 2021;196:981-993.
9. Neeraja P, and K. Investigation on progressive collapse failure in a multistorey irregular structure. Materials Today: Proceedings. 2022;51:538-542.
10. Rachakonda D and Murali K. Comparative analysis of behaviour of horizontal and vertical irregular buildings with and without using shear walls by ETABS software. Materials Today: Proceedings. 2022;52:1821-1830.
11. Intekhab MS, Das S, Jainery MA, Akhtar S, Sahoo D and Saha P. Analysis methods of irregular high-rise buildings subjected to seismic loads. Journal of Vibration Engineering & Technologies. 2023;11:1359-1382.
12. IS 1893 (Part 1) : 2016, "Criteria for Earthquake Resistant Design of Structures, Part 1 : General Provisions and Buildings".
13. IS 875 (Part 2) : 1987, "Code of practise for design loads (other than earthquake) for buildings and structures".
14. IS 875 (Part 1) : 1987, "Code of practise for design loads (other than earthquake) for buildings and structures".
15. Sonawane S, Bhapkar R, Pansare P, Yewale S and Madhekar S. Dynamic Response Characteristics of RC Buildings with Irregularities. Proceedings of 17th Symposium on Earthquake Engineering. 2023;1:71-84.
16. Pardeshi RT, Bhadange PM, Hasija SV, Khan SI, Marade MB, Pansare RH and Rupchandani KM. Analysis of Irregular High-rise Building using Shear Walls at Different Locations. International Journal of Recent Trends in Engineering and Research. 2017;3:2455 -1457.
17. Ali S, Malik F, Sonone T, Kalbande B and Agale H. Analysis of Building with Soft Storey during Earthquake. International Research Journal of Engineering and Technology. 2017;4:2395 -0056.
18. Chandrahas BL and Raju PP. Behaviour of Soft Storey RC framed building under Seismic Loading. International Journal of Civil Engineering and Technology. 2017;8:265 -277.
19. Mon LY. Comparative Study on Dynamic Analysis of Irregular Building with Shear Walls. International Journal of Science and Engineering Applications. 2014;3:2319-7560.
20. IS 456 : 2000, "Plain and reinforced concrete - code of practice".