

# Evaluation of proximate composition and seasonal variations of the muscle tissue of mouth-brooding *Tilapia Oreochromis mossambica* from Meghadrigedda Reservoir, Visakhapatnam, Andhra Pradesh

## ABSTRACT

This study aimed to investigate the proximate composition and seasonal variations in the muscle of mouth-brooding tilapia *O. mossambica* from Meghadrigedda reservoir, Visakhapatnam, Andhra Pradesh, India. The bio-chemical composition such as total protein, total fat, total carbohydrates, ash and moisture content in the muscle tissue of fish has been carried out during 2021-22 to know the seasonal changes in relation to reproductive biology. The total protein percentage values of the fish *O. mossambica* ranged between 24.5 and 36.8 in case females and males goes to 24.5 and 37.5. The total fat percentage values of the fish ranged between 5.4 and 8.6 in case females and males goes to 6.4 and 8.7. The total Carbohydrates percentage values of the fish ranged between 4.1 and 5.5 in case females and males goes to 4.8 and 5.9. Moisture percentage values of the fish ranged between 80.2 and 84.5 in case females and males goes to 75.5 and 85.5. Ash percentage values of the fish ranged between 4.1 and 4.9 in case females and males goes to 4.1 and 4.8. The results of fish clearly indicate that there was differences in the proximate composition of the male and female species.

**Keywords:** *O. mossambica*, proximate composition, reproductive biology.

## INTRODUCTION:

Fish and fishery products are vital source of food for mankind all over the world due to its high quality proximate composition. It also contains the most important nutrition components and serves as a source of energy for human beings and their domestic animals <sup>[1]</sup>. FAO <sup>[2]</sup> estimated that nearly 11% of the total population of the world is suffering from poverty and do not have access to enough nutritious food for proper growth and human health. WHO <sup>[3]</sup> has reported tripled number of obese people since 1975 which accounts for 13% of the total adult population of the world. Also, the occurrence of cardiovascular diseases related ailment to obesity and malnutrition has increased globally to 17.8 million deaths every year by 2017. It has been predicted that the population size will rise by 2.4 billion people in developing countries of Sub-Saharan Africa and South Asia by 2050 <sup>[3]</sup>. The four major biological constituents of muscle are protein, fat, moisture and ash, also called the approximate composition of fish. Fish is a particularly important part of the traditional food, and its consumption has been proven to have many health benefits <sup>[4]</sup>. Nutritional and economic factors were taken into account in the selection of the fish types. According to our findings, dry fish has high-protein content and low-fat which can contribute greatly to children's as well as adult's recommended protein intake. Fish nutritional value varies significantly depending on the species, size, and age of the fish, but understanding the proximate composition of the fish can provide us with a general idea of its nutritional profile <sup>[4]</sup>.

Fish is a supreme quality food due to its great nutritional value. For determining the nutritional quality of fish, proximate analysis of different fish is carried out by many different researchers worldwide reporting minor discrepancies in them because of the differences in their feeding habits, surrounding temperature, age, season and sex. It is reported that fish provides high quality protein containing all essential amino acids, polyunsaturated omega-3 fatty acids and several micronutrients, including vitamins and minerals <sup>[5, 6]</sup>. Fish or fish based products are a very rich source of high quality protein and there are many evidences suggesting their beneficial effects on human health <sup>[5]</sup>.

**Comment [pn1]:** It is necessary to convey more detailed objectives related to the observations made. Research background refers to a fact/issue/gap in the field.

**Comment [pn2]:** Research methods related to the number of samples used and the number of observations made can be explained.

**Comment [pn3]:** The benefits of the results of the research can be implied, for example, as obtaining information about the best nutritional content in fish according to sex in certain seasons.

**Comment [pn4]:** Keywords can be written in addition to the title. Example: age of fish, sex of fish, reproduction of fish

**Comment [pn5]:** What do cardiovascular disease and obesity have to do with fish proximates? Explainable

**Comment [pn6]:** Can you explain what causes deaths due to obesity and malnutrition? What role can fish nutrition play in overcoming this?

**Comment [pn7]:** It is necessary to explain what nutritional and economic factors are considered when choosing the type of fish. Sentences need to be completed because they can give a negative meaning.

**Comment [pn8]:** How many percent?

**Comment [pn9]:** Repetition of sentences.

The consumption of fishery products is preventing cardiovascular and other diseases<sup>[6]</sup>. Regularly eating fish can reduce the risk of cancer and other related diseases<sup>[7]</sup>, lesser risk of Alzheimer's diseases; and prevent the cardiovascular diseases<sup>[8]</sup> and other nutritional supplements. According to Love<sup>[9]</sup> the composition of fish is 70 to 80% water, 20 to 30% protein and 2 to 12% lipid. In different environmental conditions, the composition of the fish may differ in relation to water quality, food and feeding conditions and biological variables<sup>[10]</sup>. The present study deals with the months variation in the proximate composition of *O. mossambica*, total carbohydrates, total protein, fat, moisture and ash contents in muscle tissue was investigated with respect to different like south west monsoon (June, July, August and September), Post-monsoon (includes October and November), north east monsoon (December, January and February) and summer (March, April, May) in relation to reproductive biology. These values are useful data for consumers in order to choose fish, based on their nutrition quality in different seasons and months.

## MATERIALS AND METHODS:

Fish sampling are collected from Meghadrigedda reservoir, Visakhapatnam district of Andhra Pradesh and geographical coordinates of 17°45'54"N; 83°11'27"E. Then the samples were placed in ice-box and were immediately brought to the laboratory for further analysis.

### Sample Preparation:

The fish *O. mossambica* samples were collected, washed with running tap water and the excess water was removed with blotting paper. The length and weight was recorded. Non-edible portions of fish were removed immediately to avoid decomposition. The muscle was washed, dried and powder for various analyses. Estimation of proximate composition: To find out the concentrations of the total proteins, total carbohydrates, total fats, moisture and ash in *O. mossambica* samples were collected at regular monthly intervals for a period of one year (June, 2021- May, 2022) at Meghadrigedda reservoir in Visakhapatnam District.

Total Proteins: The protein content of the muscles tissue was estimated by following Lowry's<sup>[11]</sup>. Total Carbohydrates: Anthrone in Sulphuric acid can be used for colorimetric determination of sugar; methylated sugars and polysaccharides<sup>[12]</sup>. Total Fats: The total lipids were extracted from the dry tissues, by following the method of Flochet *et al.*,<sup>[13]</sup>. Moisture and Ash: Moisture and Ash was determined by AOAC methods<sup>[14]</sup>. For each analysis of proximate composition, triplicate samples were used. All of the chemicals used in this work were high purity GR grade.

## RESULTS AND DISCUSSION

### Fig-1: Monthly variations of total protein content in muscle of male and female

#### *O. mossambica*

**Comment [pn10]:** The chemical composition of *O. mossambica* fish from several researchers can be shown as a reference to differences in the percentage of proximate composition in *O. mossambica* fish under different environmental conditions. This can be a background gap, so the author wants to identify the best proximate value under certain conditions and based on gender.

**Comment [pn11]:** What is the size of the fish sample used?

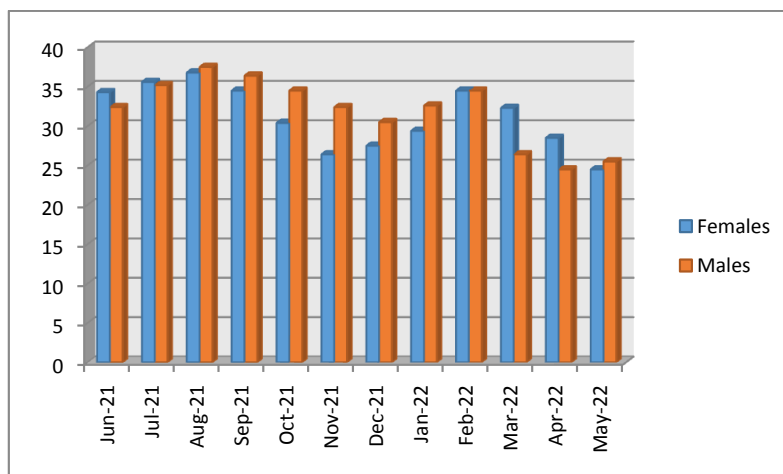
**Comment [pn12]:** Write down in detail the number of samples used, the sampling technique performed, and whether there is a repeat sampling and testing. Materials and tools used in sample preparation and proximate testing can be listed along with the brand.

**Comment [pn13]:** The sample preparation method/process can be detailed using a flow chart.

**Comment [pn14]:** How many samples are collected each month?

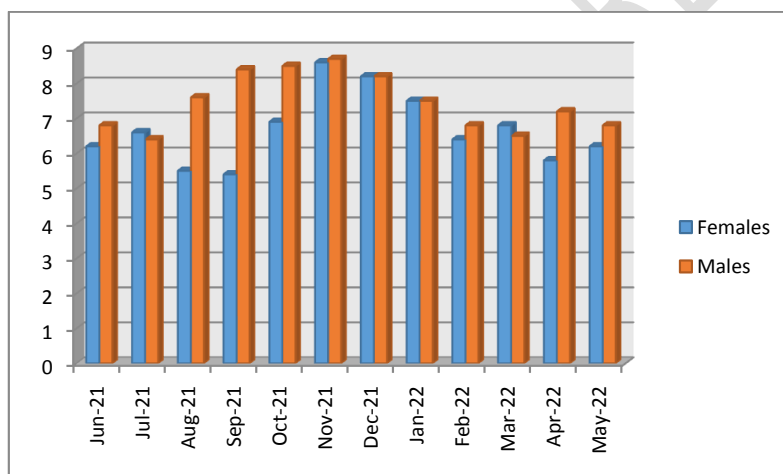
**Comment [pn15]:** Before displaying the image, there should be an introductory sentence to the image.

**Comment [pn16]:** The description of the X and Y axes on the diagram can be written. Image provisions can be customized with writing templates. Standard deviation can be added.



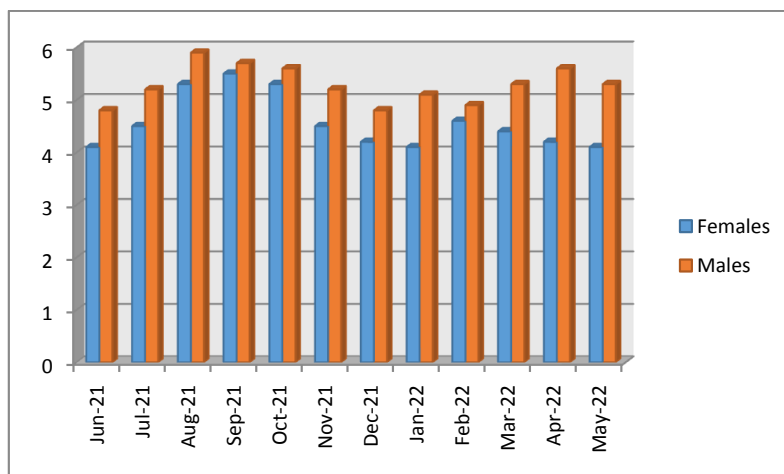
**Fig-2: Monthly variations of total Fats content in muscle of male and female *O. mossambica*.**

Comment [pn17]: Idem



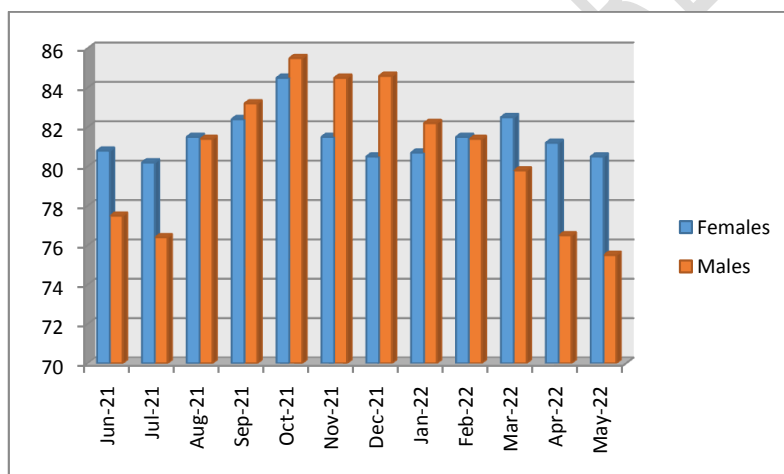
**Fig-3: Monthly variations of total Carbohydrates content in muscle of male and female *O. mossambica*.**

Comment [pn18]: Idem



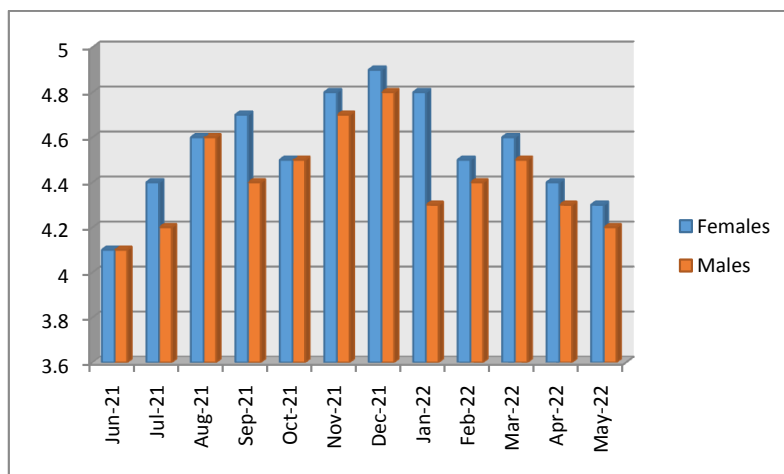
**Fig-4:Monthly variations of Moisture content in muscle of male and female *O.mossambica*.**

Comment [pn19]: Idem



**Fig-5:Monthly variations of Total Ash content in muscle of male and female *O.mossambica***

Comment [pn20]: Idem



The proximate composition and its seasonal variations of total Protein, total Fat, total Carbohydrates Moisture and Ash in muscle of freshwater fish *O. mossambica* were recorded in one year (June 2021-May 2022) from Meghadrigedda reservoir has presented Fig.1 to 5. This fish has excellent sources of high quality proteins and nutrients with medicinal value. The composition of total protein, total fat, total carbohydrates, moisture and ash contents showed variations in their abundance in different seasons in both females and males. The highest content of protein  $36.8 \pm 3.4$  in the month of August in South west monsoon and lowest  $24.5 \pm 3.2$  recorded in May in summer in case of females and the highest in males was  $37.5 \pm 3.4$  in the month of August in South west monsoon and lowest  $24.5 \pm 2.9$  in the month of April in summer. The highest content of fat was  $8.6 \pm 1.4$  was observed in Post monsoon in the month of November and the lowest  $5.4 \pm 1.9$  in South west monsoon in the month of September in case of females and the highest in males was  $8.7 \pm 1.8$  in post monsoon in the month of November and lowest  $6.4 \pm 0.9$  in south west monsoon in the month of July. Total carbohydrates was observed highest  $5.5 \pm 1.2$  in South west monsoon in the month of September and lowest  $4.1 \pm 0.6$  recorded in the North east monsoon in the month of January in case of females. In males, highest  $5.9 \pm 1.2$  was recorded in the South west monsoon in the month of August and the lowest  $4.8 \pm 1.1$  was recorded in North east monsoon in the month of February. The highest moisture  $84.5 \pm 6.5$  was observed in Post monsoon in the month of October and minimum  $80.2 \pm 5.9$  was recorded in South west monsoon in the month of July in case of females and in males the highest moisture  $85.5 \pm 6.9$  was recorded in post monsoon in the month of October and the lowest recorded  $75.5 \pm 5.6$  in summer in the month of May. The ash content was highest  $4.9 \pm 1.5$  in North east monsoon in the month of December and the lowest  $4.1 \pm 1.2$  in South west monsoon in the month of June in case of females and also males was highest  $4.8 \pm 1.6$  in North East monsoon in the month of December and lowest  $4.1 \pm 1.7$  in South west monsoon in the month of June. These differences preclude the possibility of making any such generalization which may be applicable to *O. mossambica* fishes. Biochemical constituents and these changes were attributed to factors like food quality, breeding and environmental conditions<sup>[15]</sup>. The data on the biochemical constituents i.e. total Protein, total Fat total carbohydrates, Moisture, and Ash in the muscle of *tilapia* showed little bit fluctuations in different months of observations during the study period for one complete year (June 2021 to May 2022). The muscle composition of the different fish species showed variation depending on water quality, sexual, feeding habit and these factors are responsible for fish proximate composition<sup>[15]</sup>. Fishes of various species do not provide the same nutrient profile<sup>[16]</sup> and the nutritive quality of a fish varies with season to season<sup>[17]</sup>. The protein content of the fish is considered as an important tool for evaluation of the physiological status of fishes<sup>[18]</sup>.

**Comment [pn21]:** Literacy can be added and written down in detail about the factors that affect fish proximate.

### Total Protein:

Proteins are high molecular weight polypeptides and fundamental compounds of living things. It contains in addition, non-amino acid materials, lipid or carbohydrate. Proteins play a major role in cell function and cell structure. Amino acids are the end product of digestion of protein which are used in making new protoplasm and cells. It is the most important macromolecules of organisms<sup>[19]</sup>. They are fundamental biomolecules in all aspects of cell structure and function. All enzymes are also proteins. Fish protein is highly digestible and contains a good number of essential amino acids, thereby having a high biological value. In the present study highest percentage of protein recorded in both sexes are happening in South west monsoon may be due to the maturing stage of egg condition. Low percentages of protein was marked in the post-spawning period, in which the fishes collected are mostly in spent, recovering and different stages. High values of muscle protein contents in fully mature stages of fishes indicated that the need of muscle protein. Low protein content in muscle of fish in the post-spawning may be attributed to the transfer of muscle protein towards development of gonads<sup>[15]</sup>. The protein content of female *O. mossambica* showed variations and ranged between 24.5 and 36.8%. Ahmed *et al.*,<sup>[20]</sup> reported that the nutrient composition of selected fishes and the protein values from 15.6 to 18.5%. Mustafa *et al.*,<sup>[21]</sup> recorded 17.86 to 18.5±0.92% protein values in muscle of *P. sophore*. The protein content shows a strong correlation with spawning and breeding. During southwest monsoon and late July there is a gradual enhancement of gonads weight and also muscle protein gradually increased in this study. During late-October there is a sharp decline in the weight of the gonad in both female showing spawning time<sup>[22]</sup>. Ravisankar and Aravindkumar<sup>[16]</sup> recorded that the protein values were high during pre-spawning and low at the time of spawning period. The maximum protein values during south west monsoon months (July and August) can Maximum protein values recorded in present study, south west monsoon coincided with a period of intense feeding perhaps with more in the post-monsoon. After spawning recovers to compensate the energy through vigorous feeding activity. A fall of protein percentage may be attributed to a fall in the rate of feeding because of scarcity of food material due to turbidity and other ecological factors during that months.

### Total Fats:

Fats are heterogeneous group of compounds and important dietary constituents with high energy value. It serves as an efficient source of energy stored in adipose tissue and serves as thermal insulator in subcutaneous tissues and around certain organs. Fats are essential nutrient to the body for the supply of energy and other metabolic activities. Greater amount of calories could be given to the body with lesser amounts of fat, carbohydrates and proteins. Fatty acids are the building blocks of the fat in fish body and essential fatty acids include the linolenic acid. Linolenic acid is a major component of the communicating membranes of the brain and is active in the eye retina. It is essential for growth and development. Nutritional components of fish have functional effects on health. Fish is known to contain certain polyunsaturated fatty acids that can regulate prostaglandin synthesis and hence induce wound healing.

Fats are not completely digested as compared to however carbohydrates and proteins. Sometimes slow digestion takes place in the case of a heavy fatty items. Ahmed *et al.*,<sup>[20]</sup> recorded the nutrient composition of indigenous and exotic fishes of *P. sophore*, *P. ticto* and *X. cancila*. Mustafa *et al.*,<sup>[21]</sup> observed that fat values in *P. sophore* from different stations in Bangladesh. Nahid *et al.*,<sup>[23]</sup> stated that the fat value in muscle of *X. cancila*. Bogard *et al.*,<sup>[24]</sup> reported the nutrient composition of different fishes and Siddique *et al.*,<sup>[25]</sup> also reported the fat values of *Puntius sarana* and *Puntius sophore*. Mustafa *et al.*,<sup>[26]</sup> studied on nutritional abilities of *Hilsa ilisha* and *P. sarana* and Begum *et al.*,<sup>[27]</sup> reported the muscle fat high value in *P. sarana*. Maria Zaman *et al.*,<sup>[28]</sup> recorded the nutrient levels of selected fish species of the fat value and Sarojnolini and Sarjubala Devi<sup>[29]</sup> studied on nutritive values of *Puntius sophore* and Bijayalakshmi *et al.*,<sup>[30]</sup> recorded low values of total lipid content of *Puntius sophore*. Fishes are low metabolic rate due to low temperatures and hence the accumulation of energy mostly in the form of fat<sup>[15]</sup>. Ravishankar and Arivind Kumar<sup>[16]</sup> observed that the

muscle of *Samostromabacaila* contains high fat values during pre-spawning and low at the time of spawning. Prabhakara Rao *et al.*,<sup>[31]</sup> also recorded fat levels in *rohu* (*Labeo rohita*) and *channa* (*Channa striata*). Ecological factors are influenced the proximate composition particularly fat content of selected fishes<sup>[32]</sup>.

### Total Carbohydrates:

Total Carbohydrates are a group of organic compounds including sugars, starches and fiber, which is a major source of energy for animals. Carbohydrates in fishery products contain no dietary fiber but only glucides, the majority of which consist of glycogen. They also contain traces of glucose, fructose, sucrose and other mono and disaccharides<sup>[33]</sup>. The carbohydrate in the muscle varied from 0.3 to 0.63% in *P. vigil*, [34], 2.4 to 3.4% in *C. smithi*<sup>[39]</sup>, 0.17% in body meat, 0.24% in claw meat of *S. serrata*<sup>[36]</sup>. In the present study percentage of highest value in *O. mosambica* of carbohydrate was 5.9 in case of males and females was 5.5. The lowest value in males was 4.8 and females was 4.1.

### Moisture:

Moisture forms the major component of proximate composition. The Seasonal and monthly variations in the moisture content in muscle of *O. mossambica* was observed in relation to reproductive biology. The moisture values are ranged between 73.43-78.86%. Ahmed *et al.*,<sup>[20]</sup> studied on nutrient composition of exotic fishes of Bangladesh, in that they reported the moisture values of *P. sophore*, *P. ticto* and *X. cancila* are 75.63%, 75.02% and 79.57%. Mustafa *et al.*,<sup>[26]</sup> find out moisture values in *P. Sophore* and *Hilsa* and Maria Zaman *et al.*,<sup>[28]</sup> recorded moisture content of *P. sophore* is 75.71±0.84. Bijayalakshmi *et al.*,<sup>[30]</sup> studied the moisture value of *P. sophore* is 78.95 to 81.34 ±0.257%. In present study highest moisture values were observed in August 2021 during spawning period of south monsoon season. The results of the present study revealed that changes in moisture content in the muscles of *C. striata* could be attributed to changes in moisture level and to spawning time.

**Comment [pn22]:** The relationship between moisture level and spawning time can be explained.

### Ash:

The concentration of minerals and trace elements that contribute for the total ash contents in fishes. Its depending on their food and feeding habits, water quality and sex of the fish<sup>[15]</sup> and also season, environment, ecosystem and size of the fish<sup>[37,38]</sup>. The ash content in the muscle tissue of marine fishes was generally higher than that of the freshwater fishes<sup>[39]</sup>. Ash concentrations increased marginally at mature and clearly after spawning of the fish. The high total ash content was found in the present study post monsoon. Love<sup>[9]</sup> reported that generally fish contains 0.5 to 5% of ash in their muscle tissue. Ahmed *et al.*,<sup>[20]</sup> stated on nutrient composition of the ash values of *P. sophore*, *P. ticto* and *X. cancila* are 3.56%, 3.34% and 2.02%. Mustafa *et al.*,<sup>[26]</sup> recorded 0.88±0.37%, ash values in *P. sophore* and Maria Zaman *et al.*,<sup>[28]</sup> worked on nutrient contents of some fish species of the ash value of *P. sophore* is 4.31±1.08. Begum *et al.*,<sup>[27]</sup> recorded the ash value of *P. sarana* is 2.02±0.25% and Mustafa *et al.*,<sup>[26]</sup> studied on nutritional qualities of *Hilsa* and *P. sarana* the ash values are 2.27±0.16% and 2.02±0.24%. Panchakshari *et al.*,<sup>[39]</sup> observed biochemical observations of *Latescalcarifer*. Storage is also influence the ash content changes in the muscle tissue<sup>[40]</sup>.

**Comment [pn23]:** Explainable

**Comment [pn24]:** Explainable

The intensity of feeding, quality of natural food and quantity of natural food consumed by fish and may impact on the protein and fat content in the muscles<sup>[41]</sup>. Luzia *et al.*,<sup>[42]</sup> stated that differences in fat content in the muscle of fish collected in different seasons. Seasons may also impact on the muscle of rainbow trout was reported by Skalecki *et al.*,<sup>[43]</sup>. Skalecki *et al.*,<sup>[44]</sup> studied the effect of the season on fat content in muscle tissue in perch. In the autumn season contained significantly more fat (0.29%) than those caught in the spring (0.11%)<sup>[45]</sup>. In the present study protein highest recorded in the south west monsoon and fat recorded highest in the north east monsoon.

In the present investigation the protein content of muscle has been showed to fluctuate in relation to the maturation and spawning and the observations are in similar with the findings of Jafri and Khawaja<sup>[46]</sup>. It also indicates that the protein varies directly with the fat and inversely with the moisture. Piska R.S. and Warghray<sup>[47]</sup> stated that the seasonal variations in the protein content are well marked and striking correlation with maturation, spawning and feeding activity of *A.mola*. The high content pre-spawning may be due to the fundamental nitrogen demand required for the maturation. Low value of protein is due to energy required for spawning. Piska et al.,<sup>[48]</sup> Ravisankar Piska and Aravinda Kumar<sup>[16]</sup> also reported similarity in muscles of *S. bacaoila*. Rahman et al.,<sup>[49]</sup> reported the snakehead *C.striata* is a reputed medicinal fresh water fish among the South Asian regions and used to treat wounds, alleviate pain, boosts energy and endowed with remarkable anti-inflammatory, anti-nociceptive, platelet aggregation, as well as mild antimicrobial and antifungal properties. Further the fish has nutraceutical value is outstanding and essentially contributes, at least in part, to the bioactive compounds, engaging in clinical trials, therapeutics and nutritional supplements. They further stated that the extract may also have a role in other non-traditional uses such as in treating neurological diseases and in inducing regenerative potential of organs and cells. Therefore, snakehead fish has a high potential to be used as a promising acceptable source of medicines and nutrients for the treatment of serious diseases as well as for the improvement of general body tones of human beings to a greater extent.

**Comment [pn25]:** The conclusion can be connected with the results of tilapia proximate research obtained with the benefits of fish proximate as a nutraceutical.

## REFERENCES

1. Sutharshiny S, Sivashanthini K. Total lipid and cholesterol content in the flesh of the five important commercial fishes from waters around Jaffna Peninsula, Sri Lanka. *Int J Biological Chem.* 2011; 6: 161-169.
2. FAO. The state of world fisheries and aquaculture. Rome: Food and Agriculture Organization of the United Nation; 2018.
3. World Health Organization (WHO). Obesity and overweight. [accessed 2020 March 3] 2020. <https://www.who.int/news-room/fact-sheets/details/obesity-and-overweight>.
4. Indur B,D. Vishwajit, V. Prashant and V. Ambrish. Evaluation of Muscle Proximate Composition and Nutritional Value of Six Freshwater Fish Species. *Int. J. Environ. Clim. Change.* 2023. 13(4): 156-168.
5. Krishna. P.V. Haematological and Bio-chemical observations of *Channa striatus* infected with *Acanthocephala (Pallisentissp)* *Indian Journal of Comparative Animal physiology*, Tirupathi. 2006; Vol 24(1) 38-41.
6. Marques I, Botelho G, Guiné R. Comparative study on nutritional composition of fish available in Portugal. *Nutrition & Food Science.* 2019; 49(5):925-41.
7. Sidhu KS Health benefits and potential risks related to consumption of fish or fish oil. *Regul Toxicol Pharmacol.* 2003; 38: 336-344.
8. Cahu C, Salen E, Lorgeril MD. Farmed and wild fish in the prevention of Cardiovascular diseases: Assessing possible differences in lipid nutritional values. *Nutr Metab Cardiovascular Dis.* 2004; 14: 34-41.



9. Love RM. The Chemical Biology of Fishes. Brown ME (Edn), Academic press New York, USA.1980.
10. Oliveira ERN, Agostinho AA, Matsushita M. Effect of Biological Variables and Capture Period on the Proximate Composition and Fatty Acid Composition of the Dorsal Muscle Tissue of *Hypophthalmusedentatus*(Spix, 1829). Brazilian Arch.Biol Technol.2003; 46: 105-114.
11. Lowry, O.H.; Rosebrough, J.N.; Farr, A.L. and Rose J. Randall. Protein measurement with the Folin phenol reagent. J.Biol. Chem,1951:193: 265-275.
12. Dubois, M., Gilles, K.A., Hamilton, J.K., Rebers, P.A. and Smith, F. Colorimetric Method for Determination of Sugars and Related Substances. Analytical Chemistry,1956: 28, 350-356. <http://dx.doi.org/10.1021/ac60111a017>
13. Folch, J., Lees, J. and Sloane Stanley, G. H. A simple method for the isolation and purification of total lipid from animal tissues. *J. Biolo. Chem.*1957: 266: 497-509.
14. Association of Official Analytical Chemists.Official methods of analysis, 17<sup>th</sup> Edition, The Association of Official Analytical Chemists, Gaithersburg, MD, USA.2000.
15. Krishna P.V, Gopi. G ,Hemanth Kumar. V and K. Bhanu Prakash. "Comparative study of meat composition of *Catla catla*, *Labeo rohita*, *Cirrhinus mrigala* and *Pangasius hypophthalmus* under different treatments", *International Journal of Advanced Research*, 2015.; 3(10): 480 – 485.
16. Ravishankar, P. and Arivind Kumar. Seasonal changes in the biochemical composition of muscle in relation to breeding cycle in carp minnow, *Salmostomabacaila*(Ham.) from HimayatSagar reservoir, Hyd. (India). U.P. J. Zool.,1989; 9(1): 39-42.
17. Medford, B.A. and Mackay, W.C. Protein and lipid content of gonads, liver and muscle of northern pike (*Esox lucius*) in relation to gonad growth. J. Fisheries Res.Board of Canad.1978; 35: 213-219.
18. Jafri, A.K. and Khawaja, D.K. Seasonal changes in the biochemical composition of the freshwater murrel *Ophiocephalus punctatus*(Bloch). Hydrobiologia, 1968;32: 206-213.
19. Krishna, P.V. Biochemical observations on *Heteropneustis fossilis*.infected with Epizootic Ulcerative Syndrome (EUS). *J.Ecobiology*.2002; 14 (2) 125 – 129.
20. Ahmed, S., Arifur Rahman, A.F.M., Mustafa, M.G., Hossain, M.B. And Nahar, N. Nutrient composition of indigenous and exotic fishes of rain fed waterlogged paddy fields in Lakshmipur, Bangladesh. World J. Zool.2012; 7 (2): 135-140.
21. Mustafa, M.G., Yasmin, T., Sharif Nilla, S., Rahman Khan, M.M., Rahman Khan, M.A. Effect of freezing period on the microbial and nutrient quality of pool barb, *Puntius sophore*from Dhaka city retail market, Bangladesh, 2013; 41(1): 1-11.
22. Banik, S. and Saha, S. Reproductive physiology and feeding biology of *Puntius sophore*of Tripura, India. Res. Environ. Life Sci. 2013; 6 (4) 115-118.

23. Nahid, M.N, Latifa, G.A, Farid, F.B and Begum, M. Evaluation of biochemical composition of salt and garlic treated smoke- dried Chapila (*Gudusia chapra* Hamilton, 1822) and Kaika (*Xenentodon cancila* Hamilton-Buchanan, 1822) Fish at laboratory condition (27-31o C). Res. J. Animal, Veterinary and Fishery Sci., 2014; 2 (10), 10-15.
24. Bogard, J.R., Thilsted, S.H., Marks, G.C., Wahab, M.A., Hossain, M.A.R. Jakobsen, J. and Stangoulis, J. Nutrient composition of important fish species in Bangladesh and potential contribution to recommended nutrient intakes. J. Food Composition and Analysis. 2015; 42: 120–133.
25. Siddique, M.N., Hasan, M.J., Rahman, M.Z., Islam, M.R., Boduruzaman, M., Reza, M.F. and Ray, S. Effect of freezing time on nutritional value of Jatpunti (*Puntius sophore*), Sarpunti (*P. sarana*) and Thaisarpunti (*P. gonionotus*). Bangladesh Res. Pub. J., 2011; 5 (4): 387-392.
26. Mustafa, M.G., Begum, S.R., Abdul Khaleque, M., Jannat, M. And Ahsan, D.A. Nutritional qualities of Hilsha and Sarpunti in different salt curing methods. Dhaka Univ. J. Biol. Sci. 2012; 21 (1): 97- 104. 205
27. Begum, M. and Minar, M.H. Comparative study about body composition of different SIS, Shell fish and Ilish; commonly available in Bangladesh. Trends in Fisheries Research, 2012; 1 (1): 38-42.
28. Maria Zaman, Naser, M.N., Abdullah A.T.M. And Nasima Khan. Nutrient contents of some popular freshwater and Marine fish species of Bangladesh. Bangladesh J. Zool. 2014; 42 (2): 251-259.
29. Sarojnalini, C.H. and Sarjubala Devi, W. Antioxidant Properties and Nutritive Values of Raw and Cooked Pool Barb (*Puntius sophore*) of Eastern Himalayas. Int. J. Biol., Food, Veterinary and Agricul. Eng. 2014; 8 (1): 8-12.
30. Bijayalakshmi Ch., Romen Singh N., Indira, N. And Shomorendra, M. Estimation of Moisture and Total Lipid Content of Some Small Indigenous Fishes of Manipur. Inter. J. Sci. and Res. 2014; 3 (12): 1091-1094.
31. Prabhakara Rao, P.G., Jyothirmayi, T., Karuna, M.S.L. and Prasad, R.B.N. Studies of lipid profiles and fatty acid composition of Roe from Rohu (*Labeo rohita*) and murrel (*Channa striatus*). J. Oleo Sci. 2010; 59 (10): 515-519.
32. Iverson, S.J., Frost, K.J. and Lang, S.L.C. Fat content and fatty acid composition of forage fish and invertebrates in Prince William Sound, Alaska: factors contributing to among and within species variability. Marine Ecol. Progress series. 2002; 241: 161–181.
33. Pilla, S; Konathala, R; M, R. and K, S. R. Histology and Histopathology of the *Lutjanus johnii* and *Lutjanus russelli* from Visakhapatnam coast. IOSR journal of pharmacy and Biological sciences (IOSR-JPBS). 2014; 9(3): 35-42.
34. Ravichandran, S; Kumaravel, K. and Pamela Florence, E. Nutritive composition of some edible fin fishes. International Journal of zoological Research. 2011; 7(3): 241-251.
35. Balasubramanian, C P and C. Suseelan. Biochemical composition of the deep water crab *Charybdis smithii*. Indian J. Fish., 2001; 48(3): 333-335.

36. Rao, P. Y and Sirisha, I. R. Changes in the Muscle Biochemical Composition of *Lagocephalus padiceus* (Richardson, 1845) and *Lagocephalus lunaris* (Bloch and Schneider, 1801) off Visakhapatnam, East Coast of India. *International Journal of Scientific and Research Publications*. 2013; 7(3): 1-6.
37. Andres, S., Ribeyre, F., Toureneq, J.N. and Boudou. Interspecific comparison of Cadmium and Zinc contamination in the organs of four fish species along a polymetallic pollution gradient (Lot River, France). *Sci Total Environ*. 2000; 284: 11-25.
38. Abdallah, Mohamed. M.A. Speciation of trace metals in coastal sediments of El- Max Bay south Mediterranean Sea-west of Alexandria, (Egypt). *Environ. Monitor. Assess.* 2007; 132: 111-113.
39. Panchakshari, V., P.V. Krishna, K. Madhusudhana Rao and K. Prabhavathi. Microbiological and biochemical observations of *Latescalcarifer* in different types of processing with Hurdle technology, *International Journal of Advanced Research*. 2015; 3(4): 1232-1235.
40. Hassan, M.N. Rahman, M. Hossain, M.M. Nowsad, A.A.K.M. and Hossain, M.B. Post-Harvest Loss and Shelf Life of Traditionally Smoked Shrimp Products Produced in Bangladesh. *World J. of Fish. and Marine Sci.* 2013; 5 (1): 14-19.
41. Puchala, R.; Pilarczyk, M. Nutrition Effect on Chemical Composition of Carp Meat. *Agri. Eng.* 2007; 93(5), 363–368.
42. Luzia, L. A.; Sampaio, G. R.; Castellucci, C. M. N.; Torres, E. A. F. S. The Influence of Season on the Lipid Profiles of Five Commercially Important Species of Brazilian Fish. *Food Chem.* 2003; 83(1), 93–97. DOI: 10.1016/S0308-8146(03)00054-2.
43. Skalecki, P.; Staszowska, A.; Kaliniak, A.; Florek, M. Utility Value and Meat Quality of Rainbow Trout (*Oncorhynchus mykiss* Walb.) From Extensive and Intensive Farming. *Sci. Ann. Polish Soc. Animal Product*. 2013; 9(3), 59–67.
44. Skalecki, P.; Florek, M.; Litwińczuk, A.; Zaborska, A. Utility Value and Meat Quality of Rainbow Trout (*Oncorhynchus mykiss*) with Regard to the Weight of Fish. *Sci. Ann. Polish Soc. Animal Product*. 2013; 9(1), 69–73.
45. Skalecki, P.; Florek, M.; Staszowska, A. Effect of Fishing Season on Value in Use, Intrinsic Properties, Proximate Composition and Fatty Acid Profile of Perch (*Perca fluviatilis*) Muscle Tissue. *Arch. Pol. Fish.* 2013; 21(4), 249–257.
46. Jafri, A.K. and Khawaja, D.K. Seasonal changes in the biochemical composition of the freshwater murrel *Ophiocephalus punctatus* (Bloch). *Hydrobiologia*, 1968; 32: 206-213.
47. Piska, R.S. and Waghray, S. Some aspects of reproductive Biology of Amblypharynaadon Mola (Ham) *Geobios*. 1986; 13 (5): 204-207.
48. Piska, R. S.; Naik, B.R. & Diwakara Chary, K. Variation in Biochemical composition in muscles of Amblypharynaadon Mola (Ham) with reference to its breeding cycle. *J. Aqua. Biol.* 1998; 13(1 & 2): 86-88.

49. Rahman MA, Molla MHR, Sarker MK, Chowdhury SH, Shaikh MM. Snakehead Fish (*Channa striata*) and Its Biochemical Properties for Therapeutics and Health Benefits. SF J Biotechnol Biomed Eng. 2018; 1(1): 100.

UNDER PEER REVIEW